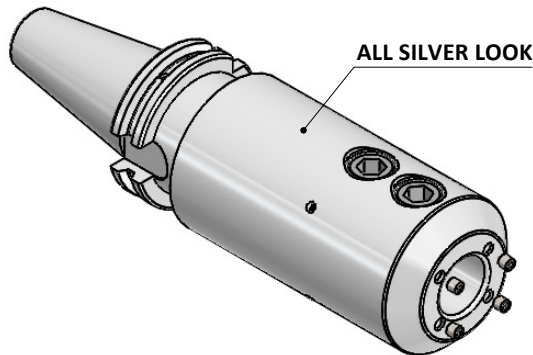
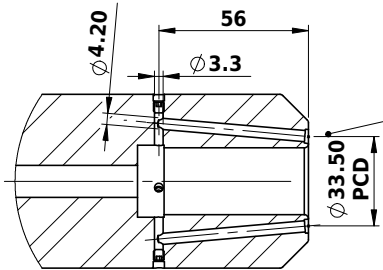


Rev.No.	Ch.Let	Alterations	Date	Sign.	Appd.



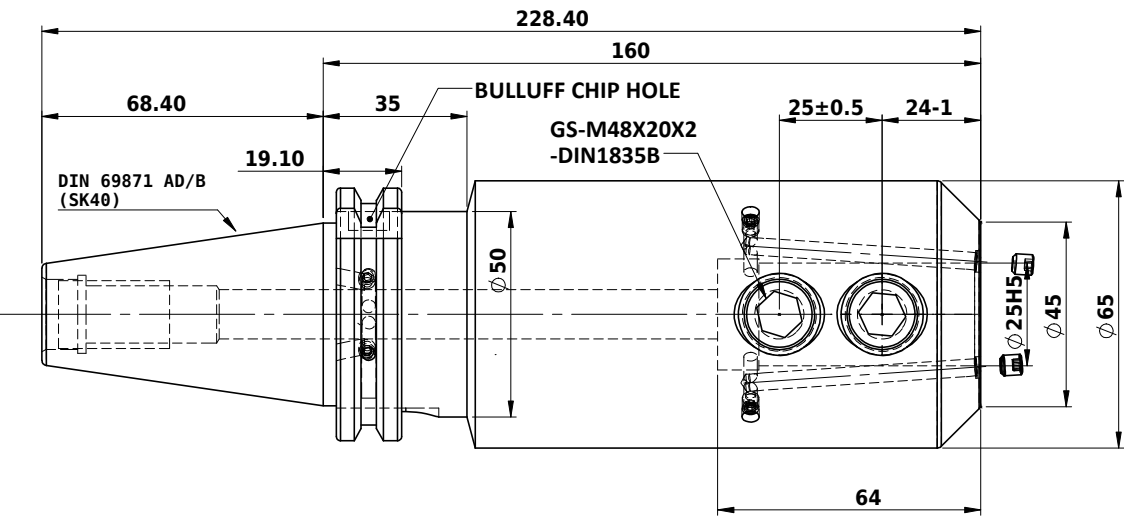
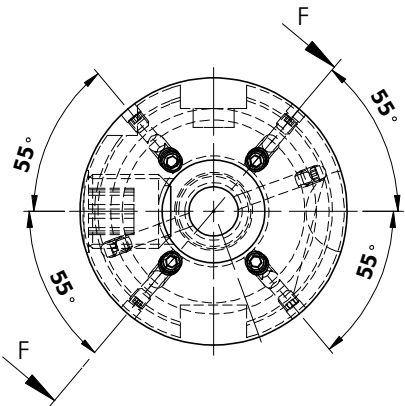
**All Dimensions are in MM**



F-F(1:2)

SCREWS TO BE PACKED SEPERATELY  
IN PLASTIC POUCH WITH LABEL & PUT INTO  
WELDON BORE & THEN SEAL THE HOLDER WITH COVER

**LABEL FOR PLASTIC BAGS:**  
Verschlusschraube  
Grub Screw  
M5 X 5mm x 2.5 mm



Label :

2002306.2502  
WELDON-AUFNAHME MIT KK  
WELD.HOLDER COOL.CHANNEL  
DIN 69871 SK40 ADB  
WK 25 mm x 160 mm  
G2.5 25000

NOTE :  
BALANCING 2.5G AT 25000 RPM

MARKING : DIN 69871 AD/B SK40 WK25H160 WEIGHT : 3.78 kgs  
G2.5 25000 U/MIN

ITEM NO.	PART NUMBER	DESCRIPTION	QTY.
1	GS-M4X4	GRUB SCREW(B.O)	6
2	GS-M18X20-DIN1835-B	GRUB SCREW-(B.O.)	2
4	GS-M5X5	GRUB SCREW(B.O)	4
5	SK40EK25160FWW	ENDMILL HOLDER	1

μ m	0.012	0.025	0.05	0.1	0.2	0.4	0.8	1.6	3.2	6.3	12.5	25	50
GRADES	N1	N2	N3	N4	N5	N6	N7	N8	N9	N10	N11	N12	
SYMBOLS	▽▽▽			▽▽▽			▽▽			▽			~
TOLERANCE FREE DIMENSIONS TOLERANCE	16MnCr5		2019	NAME	DATE	<b>WEMAG</b> <b>2002306.2502</b>							
Dimns. Dia Length	DRAWN	PGK	21/06										
0.5 to 3 ± 0.05 ± 0.10	CHECKED	RVL	21/06										
3 to 6 ± 0.10 ± 0.15	APPROVED												
6 to 30 ± 0.15 ± 0.20	SCALE : NTS QTY. :		PART NAME:		DRAWING No.		<b>FWS409H-EKH25160</b>						
30 to 120 ± 0.20 ± 0.25	SK40EK25160FWW		REV.		00								
120 to 500 ± 0.30 ± 0.50													