

CUSTOMER APPROVAL REQUIRED

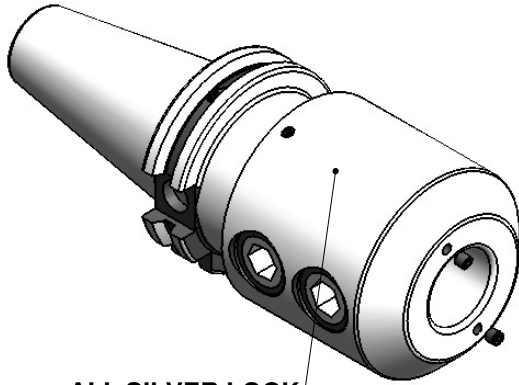
APPROVED BY

DATE

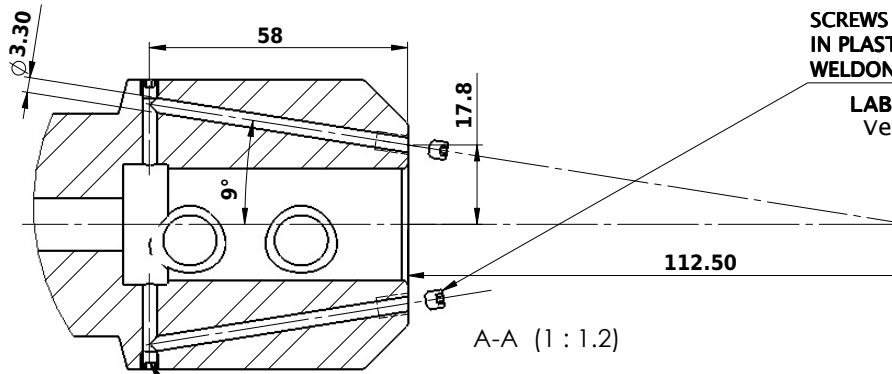
FOR QUOTATION PURPOSE ONLY

All Dimensions are in MM

Rev.No.	Ch.Let	Alterations	Date	Sign.	Appd.



ALL SILVER LOOK



PERMENT SEALING WITH LOCTITE

SCREWS TO BE PACKED SEPERATELY IN PLASTIC POUCH WITH LABEL & PUT INTO WELDON BORE & THEN SEAL THE HOLDER WITH COVER

LABEL FOR PLASTIC BAGS:
 Verschlusschraube
 Grub Screw
 M4 X 4mm x 2 mm

Label :

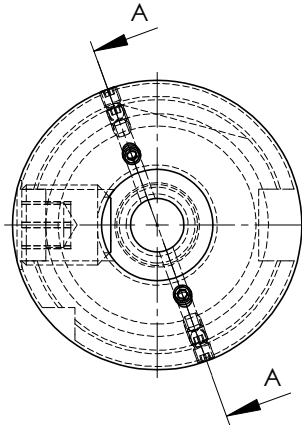
2002306.2501
 WELDON-AUFNAHME MIT KK
 WELD.HOLDER COOL.CHANNEL
 DIN69871 SK40 ADB
 WK 25 mm x 100 mm
 G6.3 / 15000

NOTE :

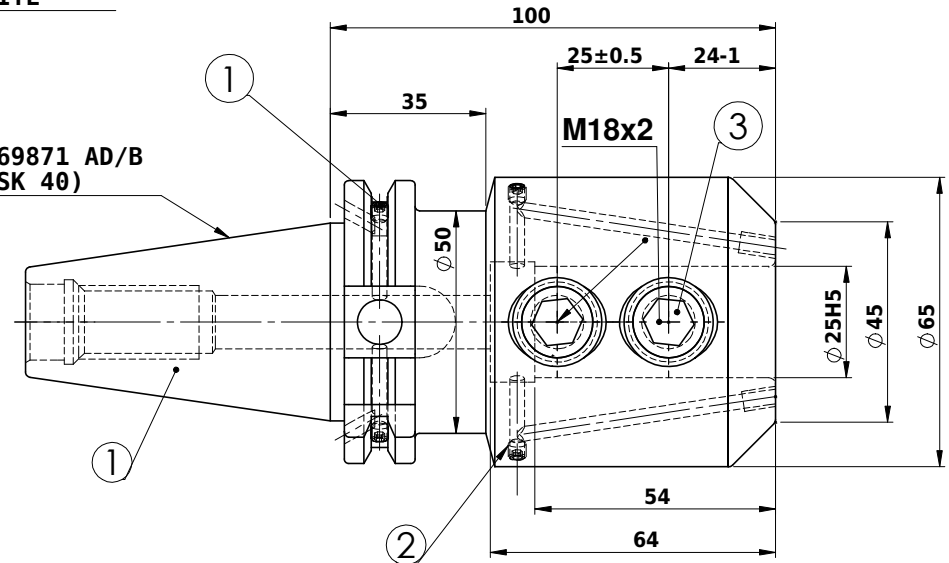
BALANCING 6.3G AT 15000 RPM

WEIGHT : 2.7 kg

**MARKING : DIN 69871 AD/B SK40 WK25H100
 G6.3 15000 U/MIN**



DIN 69871 AD/B (SK 40)



ITEM NO.	PART NUMBER	DESCRIPTION	QTY.
3	BO	GS-M18X2X20-DIN1835-B	2
2	BO	GRUB SCREW M4X4	6
1	SK40 EK 25 100 FTC WW.	END MILL HOLDER	1

μ m	0.012	0.025	0.05	0.1	0.2	0.4	0.8	1.6	3.2	6.3	12.5	25	50
GRADES	N1	N2	N3	N4	N5	N6	N7	N8	N9	N10	N11	N12	
SYMBOLS	▽	▽	▽	▽	▽	▽	▽	▽	▽	▽	▽	▽	~
TOLERANCE FREE DIMENSIONS TOLERANCE	2014		NAME		DATE		WEMAG 2002306.2501						
MATERIALS: 16MnCr5	DRAWN		RPA		28/07								
	CHECKED		RVL		28/07								
	APPROVED		SSR		28/07								
Dimns.	Dia	Length	SCALE : NTS		QTY. :		DRAWING No. SK40 EK 25 100 FTC WW.						
0.5 to 3	± 0.05	± 0.10	PART NAME:		END MILL HOLDER		REV. 00						
3 to 6	± 0.10	± 0.15											
6 to 30	± 0.15	± 0.20											
30 to 120	± 0.20	± 0.25											
120 to 500	± 0.30	± 0.50											