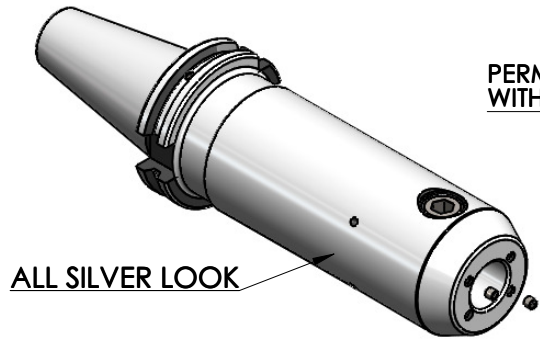


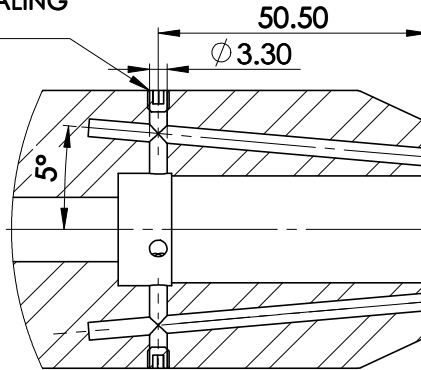
All Dimensions are in MM

Rev.No.	Ch.Lef	Alterations	Date	Sign.	Appd.



ALL SILVER LOOK

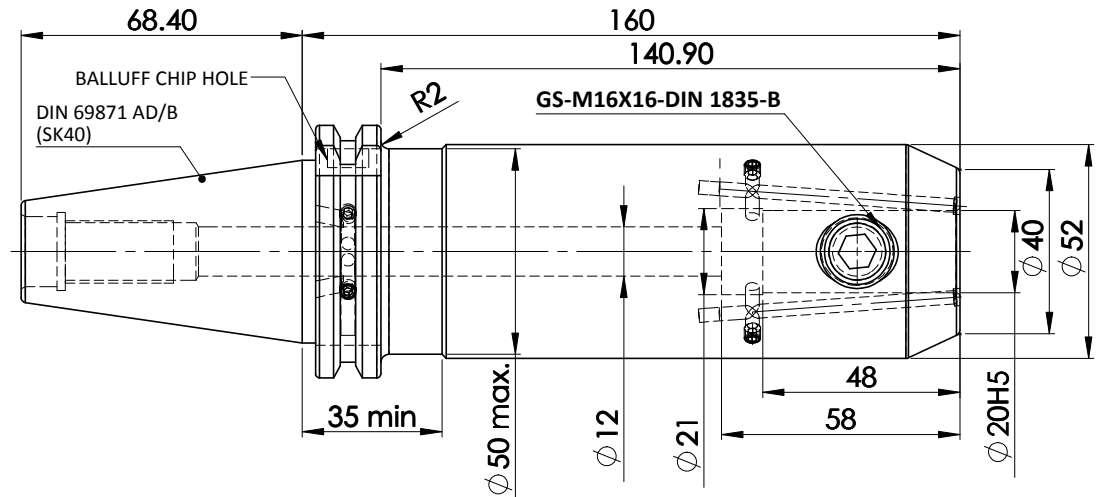
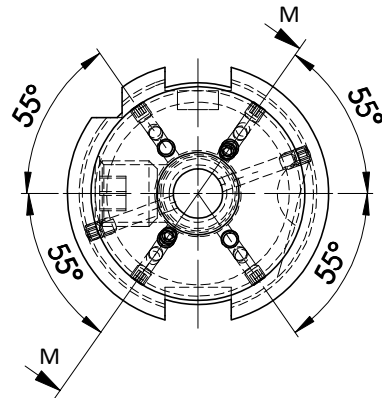
PERMEMENT SEALING WITH LOCTITE



M-M (1:1)

SCREWS TO BE PACKED SEPERATELY IN PLASTIC POUCH WITH LABEL & PUT INTO WELDON BORE & THEN SEAL THE HOLDER WITH COVER

LABEL FOR PLASTIC BAGS:  
Verschlusschraube  
Grub Screw  
M4 X 4mm x 2 mm



Label :

2002306.2002  
WELDON-AUFNAHME MIT KK  
WELD.HOLDER COOL.CHANNEL  
DIN69871 SK40 ADB  
WK 20 mm x 160 mm  
G2.5 / 25000 U/MIN

MARKING : DIN 69871 AD/B SK40 WK20H160  
G2.5 25000 U/MIN

NOTE :  
BALANCING 2.5G AT 25000 RPM  
WEIGHT : 2.8 kgs

ITEM NO.	PART NUMBER	DESCRIPTION	QTY
1	FWS409H-EKH20160	SK40EK20160FWW	1
2	GS-M16x16-DIN1835-B	GRUB SCREW (B.O.)	1
3	GS-M4X4	GRUB SCREW	8

	μ m	0.012	0.025	0.05	0.1	0.2	0.4	0.8	1.6	3.2	6.3	12.5	25	50
GRADES		N1	N2	N3	N4	N5	N6	N7	N8	N9	N10	N11	N12	
SYMBOLS		▽▽▽	▽▽	▽	▽	▽	▽	▽	▽	▽	▽	▽	▽	~
TOLERANCE FREE DIMENSIONS	MATERIALS:	2019	NAME	DATE	<p style="text-align: center;"><b>WEMAG</b> <b>2002306.2002</b></p>									
TOLERANCE	16MnCr5	DRAWN	PGK	21/06										
Dimns. Dia Length		CHECKED	RVL	21/06										
0.5 to 3 ± 0.05 ± 0.10		APPROVED												
3 to 6 ± 0.10 ± 0.15		SCALE: 2:1	QTY.:		DRAWING No.									
6 to 30 ± 0.15 ± 0.20		PART NAME:			REV.									
30 to 120 ± 0.20 ± 0.25		SK40EM20160FWW			00									
120 to 500 ± 0.30 ± 0.50														