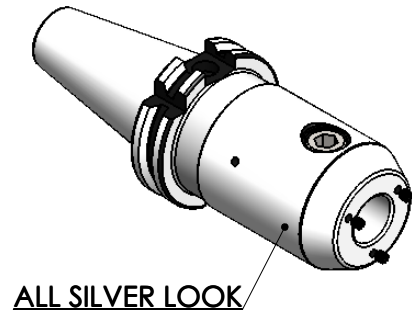
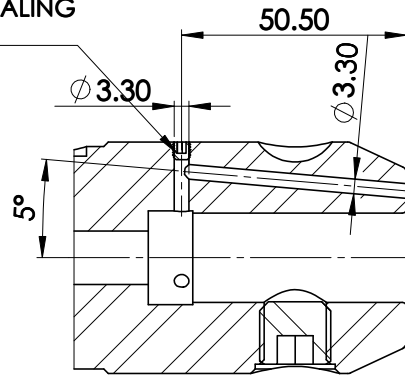


All Dimensions are in MM

Rev.No.	Ch.Lef	Alterations	Date	Sign.	Appd.



PERMENT SEALING WITH LOCTITE



SCREWS TO BE PACKED SEPERATELY IN PLASTIC POUCH WITH LABEL & PUT INTO WELDON BORE & THEN SEAL THE HOLDER WITH COVER

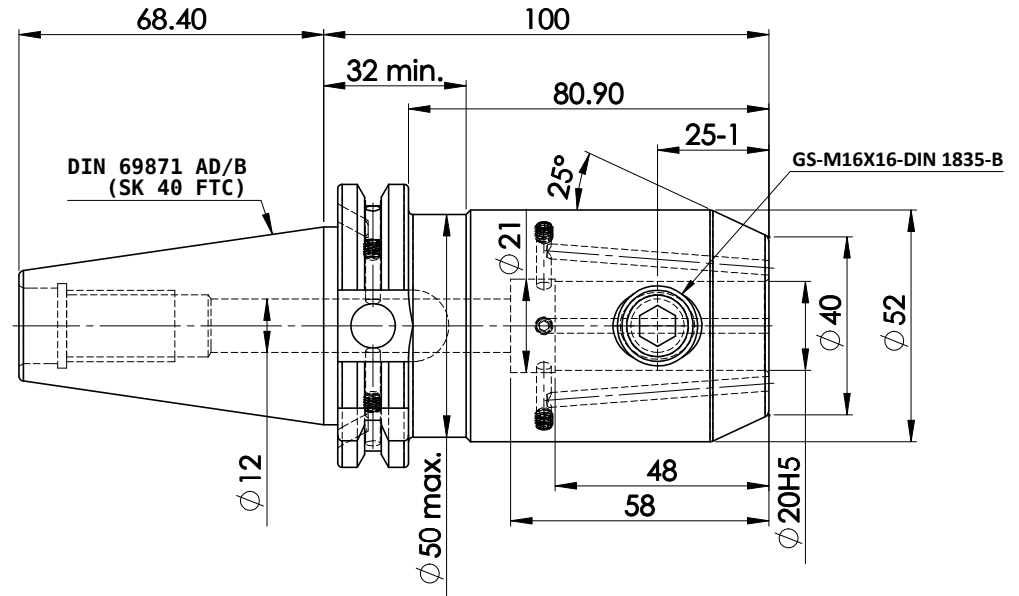
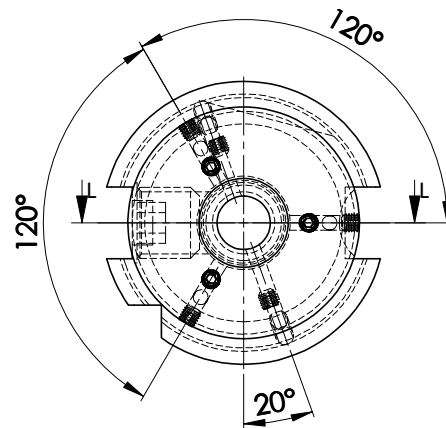
LABEL FOR PLASTIC BAGS:  
Verschlusschraube  
Grub Screw  
M4 X 4mm x 2 mm

CUSTOMER APPROVAL REQUIRED

APPROVED BY	
DATE	

FOR QUOTATION PURPOSE ONLY

L-L (1 : 1.2)



Label :  
2002306.2001  
WELDON-AUFNAHME MIT KK  
WELD.HOLDER  
COOL.CHANNEL  
DIN69871 SK40 ADB  
WK 20 mm x 100 mm  
G2.5 25000 U/MIN

MARKING : DIN 69871 AD/B SK40 WK20H100  
G2.5 25000 U/MIN

NOTE :

BALANCING 2.5G AT 25000 RPM

WEIGHT : 2.2 kgs

ITEM NO.	PART NUMBER	DESCRIPTION	QTY
1	FWS409H-EKH20100	SK40EK20100FWW	1
2	GS-M16x16-DIN 1835 -B	GRUB SCREW (B.O.)	1
3	GS-M4X4	GRUB SCREW-(B.O)	8

µ m	0.012	0.025	0.05	0.1	0.2	0.4	0.8	1.6	3.2	6.3	12.5	25	50
GRADES	N1	N2	N3	N4	N5	N6	N7	N8	N9	N10	N11	N12	
SYMBOLS	▽▽▽	▽▽	▽	▽	▽	▽	▽	▽	▽	▽	▽	▽	~
TOLERANCE FREE DIMENSIONS	MATERIALS: 16MnCr5			2016	NAME	DATE	<b>WEMAG</b> <b>2002306.2001</b> DRAWING No. FWS409H-EKH20100 REV. 00						
Dimns. Dia Length	ELA	08/12											
0.5 to 3 ± 0.05 ± 0.10	CHECKED	RVL	08/12										
3 to 6 ± 0.10 ± 0.15	APPROVED												
6 to 30 ± 0.15 ± 0.20	SCALE: 2:1	QTY.:											
30 to 120 ± 0.20 ± 0.25	PART NAME: SK40EK20100FWW												
120 to 500 ± 0.30 ± 0.50													