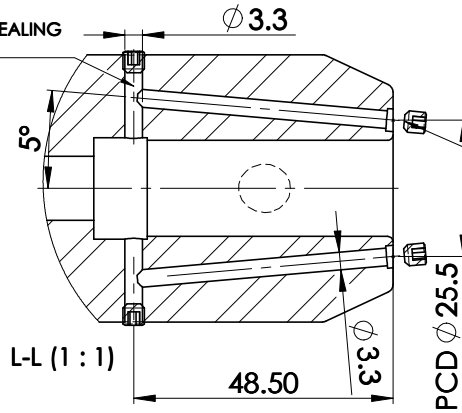


ALL SILVER LOOK

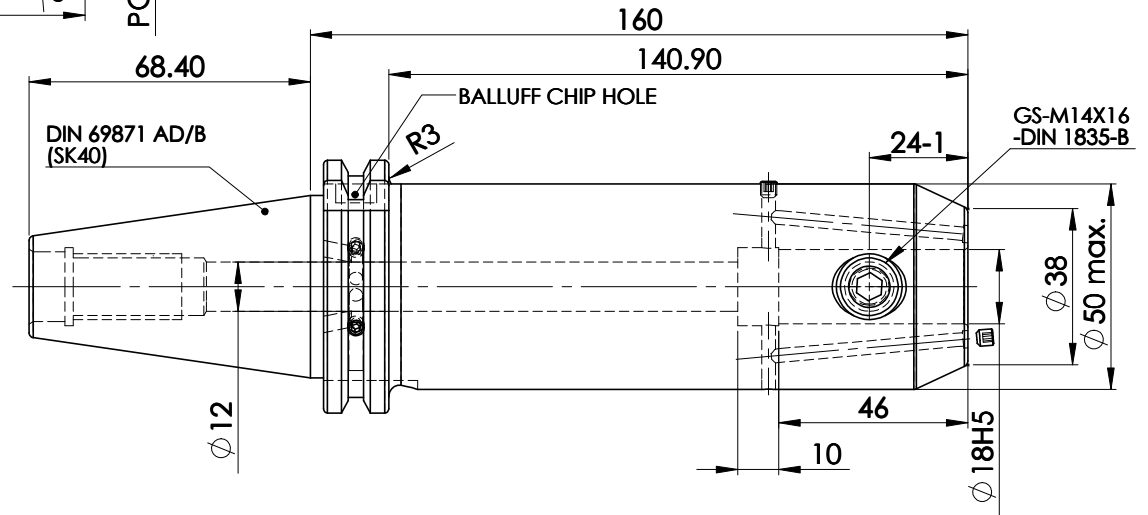
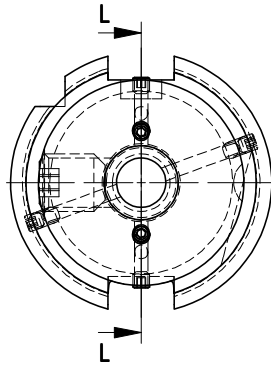
All Dimensions are in MM

PERMNET SEALING WITH LOCTITE



SCREWS TO BE PACKED SEPERATELY IN PLASTIC POUCH WITH LABEL & PUT INTO WELDON BORE & THEN SEAL THE HOLDER WITH COVER

LABEL FOR PLASTIC BAGS:
Verschlusschraube
Grub Screw
M4 X 4mm x 2 mm



Label :

9002306.1802
WELDON-AUFNAHME MIT KK
WELD.HOLDER COOL.CHANNEL
DIN69871 SK40 ADB
WK 18 mm x 160 mm
G2.5 / 25000 U/MIN

MARKING : DIN 69871 AD/B SK40 WK18H160
G2.5 25000 U/MIN

NOTE :
BALANCING 2.5G AT 25000 RPM
WEIGHT : 2.67 kgs

ITEM NO.	PART NUMBER	DESCRIPTION	QTY
1	FWS409H-EKH18160	SK40EK18160FWW	1
2	GS-M14X16-DIN1835-B	GRUB SCREW-(B.O)	1
3	GS-M4 x 4	GRUB SCREW(B.O.)	6

TOLERANCE		GRADES																																			
FREE DIMENSIONS		N1			N2			N3			N4			N5			N6			N7			N8			N9			N10			N11			N12		
TOLERANCE		SYMBOLS																																			
MATERIALS:		16MnCr5																																			
DRAWN		2019			NAME			DATE			DRAWN			PGK			20/06			CHECKED			RVL			20/06			APPROVED								
Dimns.		Dia		Length		SCALE: 2:1		QTY.:		PART NAME:			DRAWING No.			REV.																					
0.5 to 3		± 0.05		± 0.10		SK40EK18160FWW			FWS409H-EKH18160			00																									
3 to 6		± 0.10		± 0.15																																	
6 to 30		± 0.15		± 0.20																																	
30 to 120		± 0.20		± 0.25																																	
120 to 500		± 0.30		± 0.50																																	