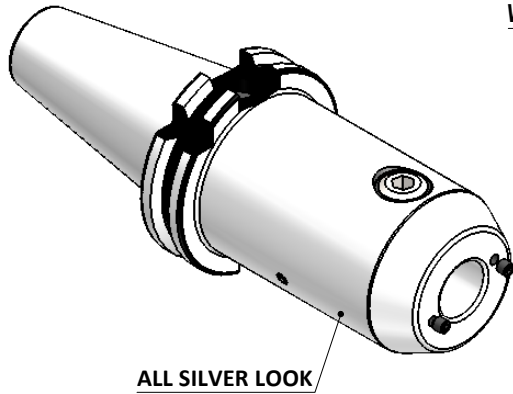
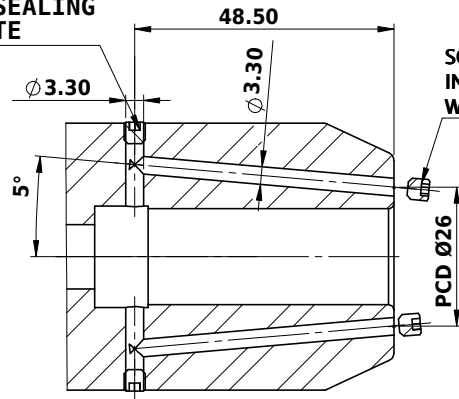


All Dimensions are in MM

Rev.No.	Ch.Let	Alterations	Date	Sign.	Appd.



PERMNET SEALING WITH LOCTITE



SCREWS TO BE PACKED SEPERATELY IN PLASTIC POUCH WITH LABEL & PUT INTO WELDON BORE & THEN SEAL THE HOLDER WITH COVER

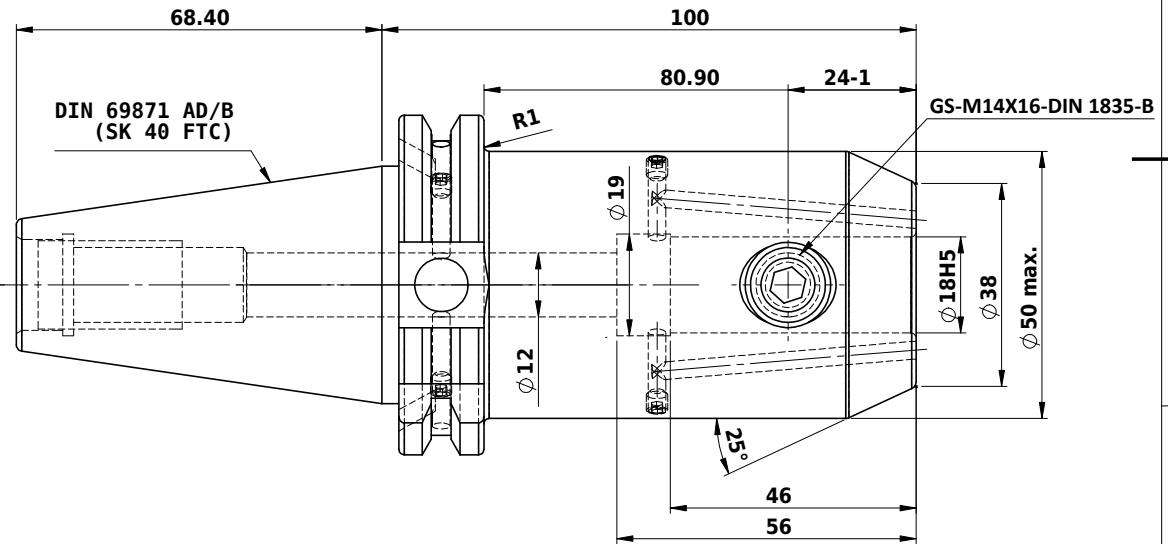
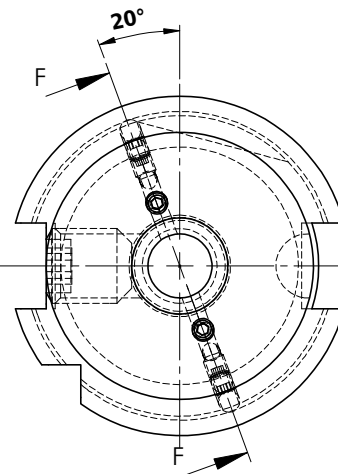
LABEL FOR PLASTIC BAGS:
Verschlusschraube
Grub Screw
M4 X 4mm x 2 mm

CUSTOMER APPROVAL REQUIRED

APPROVED BY	
DATE	

FOR QUOTATION PURPOSE ONLY

F-F (1 : 1)



Label :
2002306.1801
WELDON-AUFNAHME MIT KK
WELD.HOLDER COOL.CHANNEL
DIN69871 SK40 ADB
WK 18 mm x 100 mm
G2.5 / 25000 U/MIN

MARKING : DIN 69871 AD/B SK40 WK18H100
G2.5 25000 U/MIN

NOTE :

BALANCING 2.5G AT 25000 RPM

WEIGHT : 2 kg

ITEM NO.	PART NUMBER	DESCRIPTION	QTY.
1	FWS409H-EKH18100	SK40EK18100FWW	1
2	GS-M14X16-DIN1835-B	GRUB SCREW-(B.O)	1
3	GS-M4X4	GRUB SCREW(B.O)	6

μ m	0.012	0.025	0.05	0.1	0.2	0.4	0.8	1.6	3.2	6.3	12.5	25	50
GRADES	N1	N2	N3	N4	N5	N6	N7	N8	N9	N10	N11	N12	
SYMBOLS	▽▽▽▽▽▽▽▽▽▽▽▽												
TOLERANCE FREE DIMENSIONS TOLERANCE	MATERIALS:		2016	NAME	DATE	WEMAG 2002306.1801 DRAWING No. FWS409H-EKH18100							
Dimns.	Dia	Length	16MnCr5	ELA	08/12								
0.5 to 3	± 0.05	± 0.10		RVL	08/12								
3 to 6	± 0.10	± 0.15		SCALE : NTS	QTY. :								
6 to 30	± 0.15	± 0.20	PART NAME:			SK40EK18100FWW		DRAWING No.		FWS409H-EKH18100		REV.	
30 to 120	± 0.20	± 0.25										00	
120 to 500	± 0.30	± 0.50											