

CUSTOMER APPROVAL REQUIRED	
APPROVED BY	
DATE	

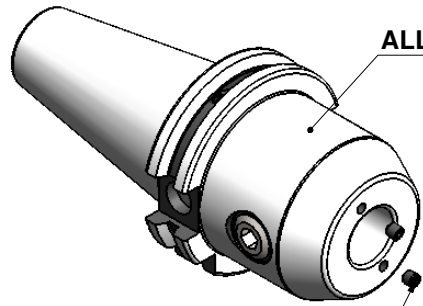
**All Dimensions are in MM**

Rev.No.	Ch.Let	Alterations	Date	Sign.	Appd.

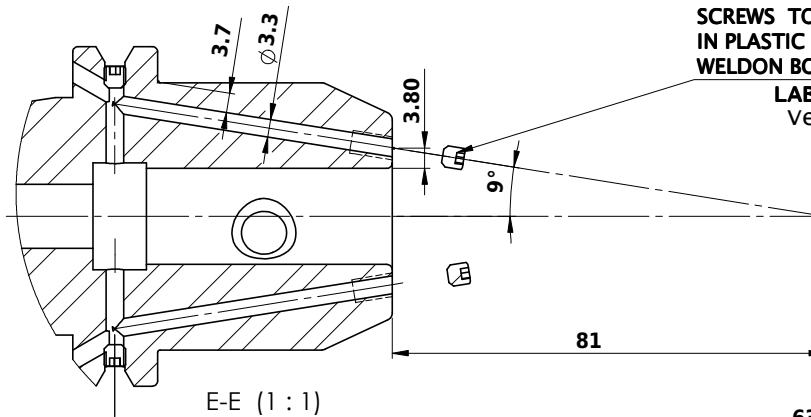
FOR QUOTATION PURPOSE ONLY

SCREWS TO BE PACKED SEPARATELY  
IN PLASTIC POUCH WITH LABEL & PUT INTO  
WELDON BORE & THEN SEAL THE HOLDER WITH COVER

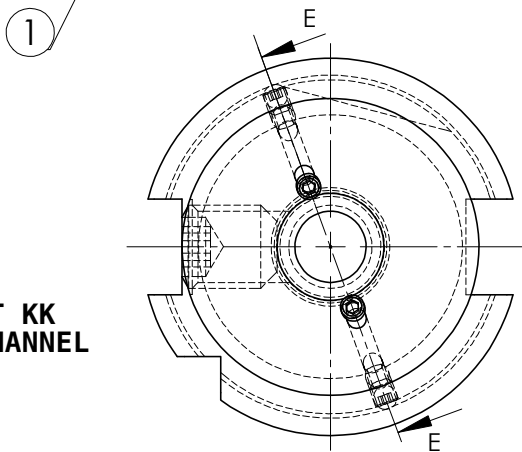
**LABEL FOR PLASTIC BAGS:**  
Verschlusschraube  
Grub Screw  
M4 X 4mm x 2 mm



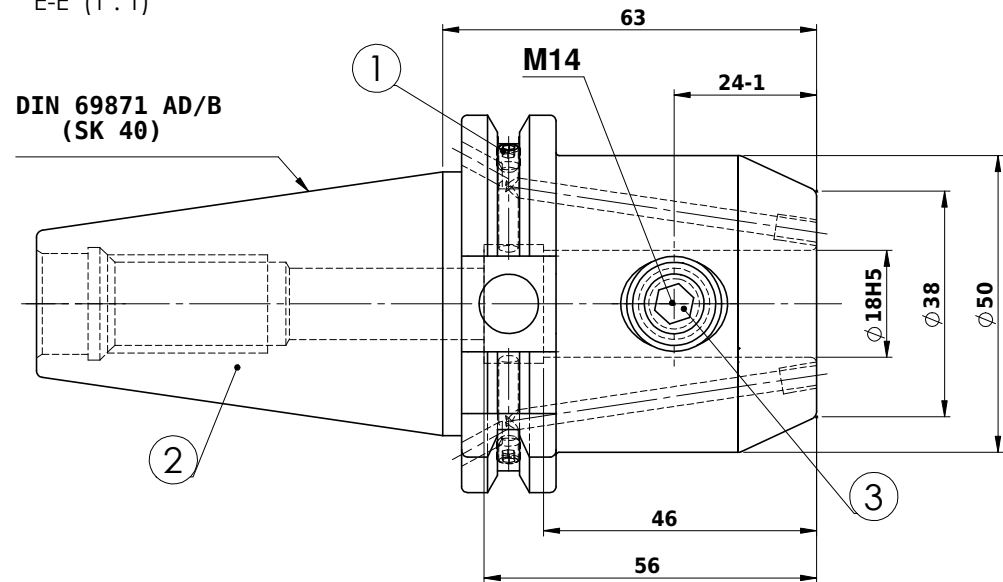
ALL SILVER LOOK



E-E (1 : 1)



DIN 69871 AD/B  
(SK 40)



Label :

2002306.1800  
WELDON-AUFNAHME MIT KK  
WELD.HOLDER COOL.CHANNEL  
DIN69871 SK40 ADB  
WK 18 mm x 63 mm  
G6.3 / 15000

MARKING : DIN 69871 AD/B SK40 WK18H63  
G6.3 15000 U/MIN

NOTE :

BALANCING 6.3G AT 15000 RPM

WEIGHT : 1.5 kg

ITEM NO.	PART NUMBER	DESCRIPTION	QTY.
1	BO	GRUB SCREW M4X4	4
2	SK40 EK 18 063 FTC WW.	END MILL HOLDER	1
3	B.O.	GS-M14X16-DIN1835-B	1

		μ m	0.012	0.025	0.05	0.1	0.2	0.4	0.8	1.6	3.2	6.3	12.5	25	50		
		GRADES	N1	N2	N3	N4	N5	N6	N7	N8	N9	N10	N11	N12			
		SYMBOLS	▽▽▽			▽▽▽			▽▽			▽			~		
TOLERANCE		FREE DIMENSIONS		TOLERANCE		MATERIALS:		2014	NAME	DATE	<b>WEMAG</b> <b>2002306.1800</b> DRAWING No. SK40 EK 18 063 FTC WW. REV. 00						
Dimns.		Dia		Length		16MnCr5		DRAWN	RPA	28/07							
0.5 to 3		± 0.05		± 0.10				CHECKED	RVL	28/07							
3 to 6		± 0.10		± 0.15				APPROVED	SSR	28/07							
6 to 30		± 0.15		± 0.20				SCALE : NTS		QTY. :							
30 to 120		± 0.20		± 0.25		PART NAME:		END MILL HOLDER									
120 to 500		± 0.30		± 0.50													