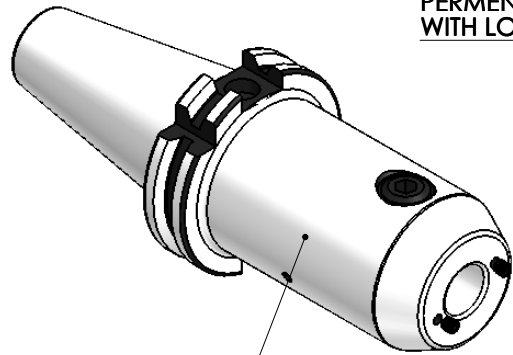


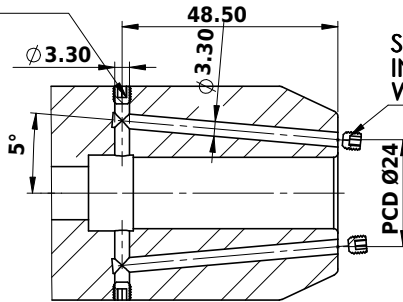
All Dimensions are in MM

Rev.No.	Ch.Lef	Alterations	Date	Sign.	Appd.



ALL SILVER LOOK

PERMENENT SEALING WITH LOCTITE



F-F (1 : 1.2)

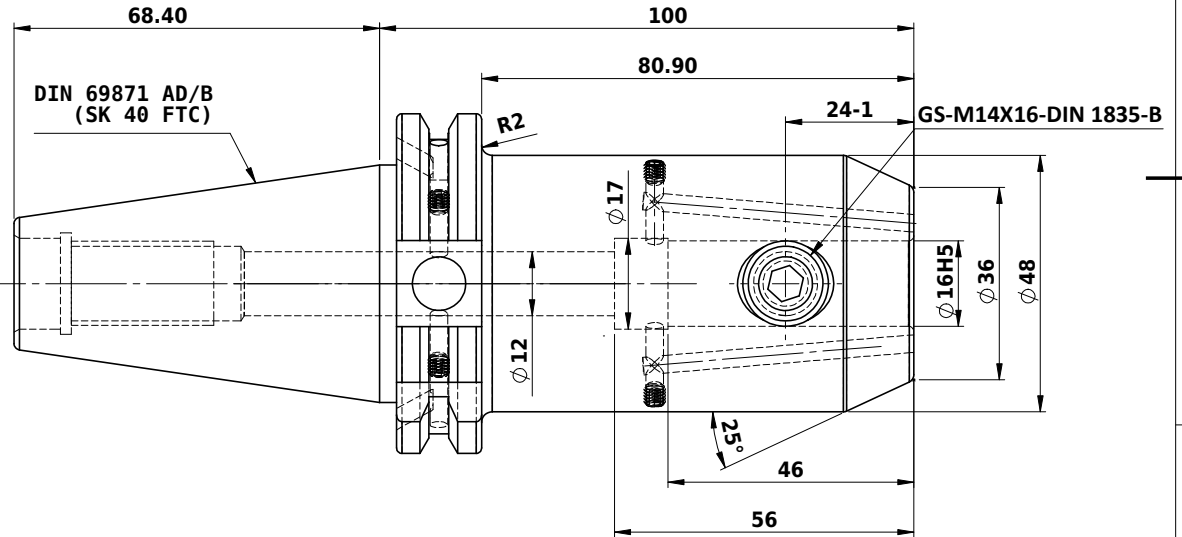
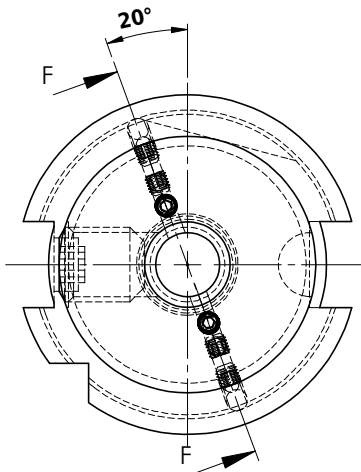
SCREWS TO BE PACKED SEPERATELY IN PLASTIC POUCH WITH LABEL & PUT INTO WELDON BORE & THEN SEAL THE HOLDER WITH COVER

LABEL FOR PLASTIC BAGS:
Verschlusschraube
Grub Screw
M4 X 4mm x 2 mm

CUSTOMER APPROVAL REQUIRED

APPROVED BY	
DATE	

FOR QUOTATION PURPOSE ONLY



Label :
2002306.1601
WELDON-AUFNAHME MIT KK
WELD.HOLDER COOL.CHANNEL
DIN69871 SK40 ADB
WK 16 mm x 100 mm
G2.5 / 25000 U/MIN

MARKING : DIN 69871 AD/B SK40 WK16H100
G2.5 25000 U/MIN

NOTE :

BALANCING 2.5G AT 25000 RPM

WEIGHT : 1.9 kg

ITEM NO.	PART NUMBER	DESCRIPTION	QTY.
1	FWS409H-EKH16100	SK40EK16100FWW	1
2	GS-M14X16-DIN1835-B	GRUB SCREW-(B.O)	1
3	GS-M4x4	GRUB SCREW (B.O.)	6

μ m	0.012	0.025	0.05	0.1	0.2	0.4	0.8	1.6	3.2	6.3	12.5	25	50
GRADES	N1	N2	N3	N4	N5	N6	N7	N8	N9	N10	N11	N12	
SYMBOLS	▽▽▽	▽▽▽	▽▽▽	▽▽▽	▽▽▽	▽▽▽	▽▽▽	▽▽▽	▽▽▽	▽▽▽	▽▽▽	▽▽▽	~
TOLERANCE	MATERIALS: 16MnCr5												
FREE DIMENSIONS	2016		NAME		DATE								
TOLERANCE	DRAWN		ELA		08/12								
Dimms.	Dia	Length	CHECKED		RVL		08/12						
0.5 to 3	± 0.05	± 0.10	APPROVED										
3 to 6	± 0.10	± 0.15	SCALE: 2:1		QTY.:								
6 to 30	± 0.15	± 0.20	PART NAME:									DRAWING No.	
30 to 120	± 0.20	± 0.25	SK40EK16100FWW									REV.	
120 to 500	± 0.30	± 0.50										00	

WEMAG
2002306.1601

FWS409H-EKH16100