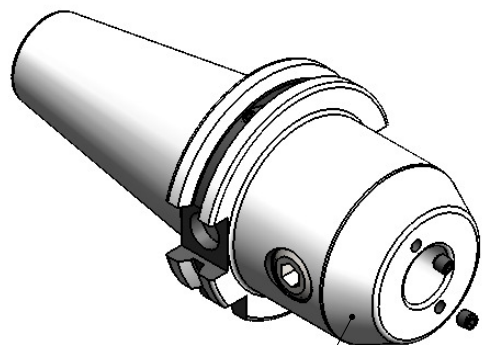


CUSTOMER APPROVAL REQUIRED	
APPROVED BY	
DATE	

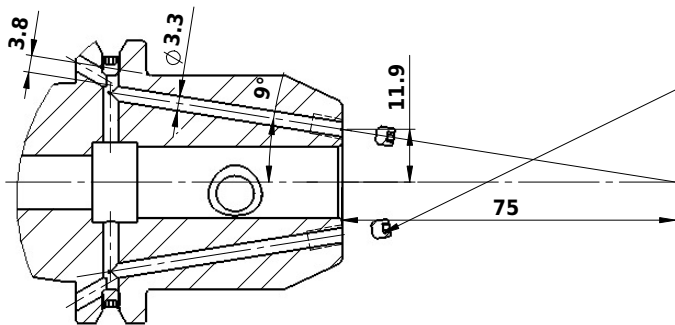
FOR QUOTATION PURPOSE ONLY

All Dimensions are in MM

Rev.No.	Ch.Let	Alterations	Date	Sign.	Appd.



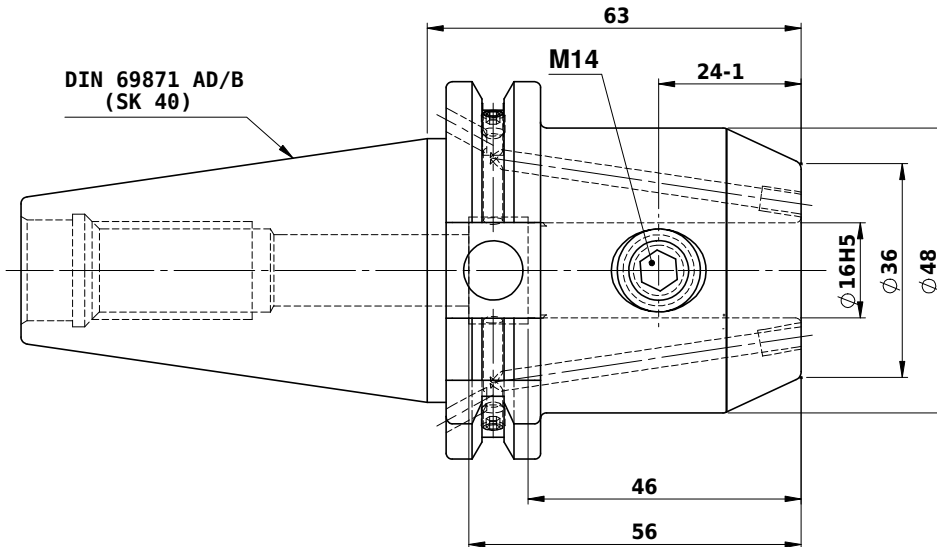
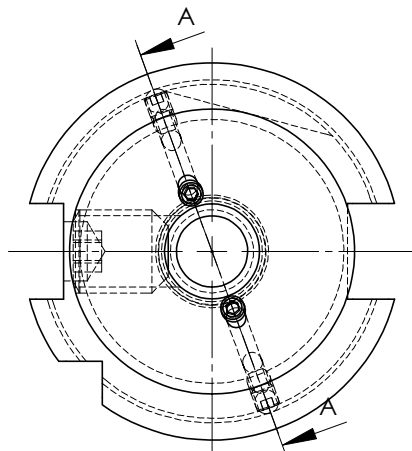
ALL SILVER LOOK



A-A (1:1.2)

SCREWS TO BE PACKED SEPERATELY
IN PLASTIC POUCH WITH LABEL & PUT INTO
WELDON BORE & THEN SEAL THE HOLDER WITH COVER

LABEL FOR PLASTIC BAGS:
Verschlusschraube
Grub Screw
M4 X 4mm x 2 mm



DIN 69871 AD/B
(SK 40)

Label :
2002306.1600
WELDON-AUFNAHME MIT KK
WELD.HOLDER COOL.CHANNEL
DIN69871 SK40 ADB
WK 16 mm x 63 mm
G6.3 / 15000

NOTE :
BALANCING 6.3G AT 15000 RPM
WEIGHT : 1.5 kg

MARKING : DIN 69871 AD/B SK40 WK16H63
G6.3 15000 U/MIN

ITEM NO.	PART NUMBER	DESCRIPTION	QTY.
1	BO	GRUB SCREW M4X4	4
2	SK40 EK 16 063 FTC WW.	END MILL HOLDER	1
3	B.O.	GS-M14X16-DIN1835-B	1

μ m	0.012	0.025	0.05	0.1	0.2	0.4	0.8	1.6	3.2	6.3	12.5	25	50		
GRADES	N1		N2	N3	N4	N5	N6	N7	N8	N9	N10	N11	N12		
SYMBOLS	▽▽▽		▽▽	▽	▽	▽	▽	▽	▽	▽	▽	▽	~		
TOLERANCE FREE DIMENSIONS TOLERANCE	2014		NAME		DATE		WEMAG 2002306.1600								
Dimns.	Dia	Length	DRAWN		RPA									28/07	
0.5 to 3	± 0.05	± 0.10	CHECKED		RVL									28/07	
3 to 6	± 0.10	± 0.15	APPROVED		-									-	
6 to 30	± 0.15	± 0.20	SCALE : NTS		QTY. :		PART NAME: END MILL HOLDER								
30 to 120	± 0.20	± 0.25	DRAWING No.		DRAWING No. SK40 EK 16 063 FTC WW.00										
120 to 500	± 0.30	± 0.50	REV.		REV.										