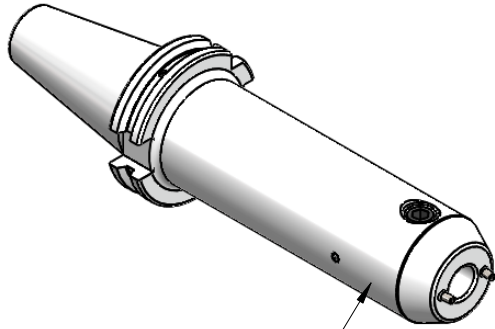
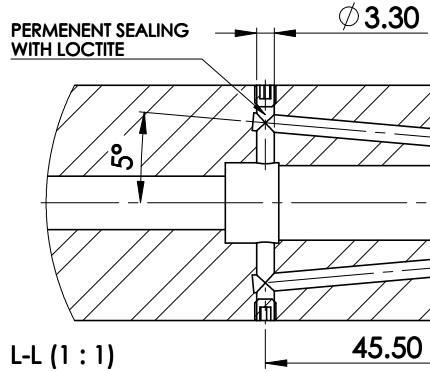


All Dimensions are in MM

Rev.No.	Ch.Let	Alterations	Date	Sign.	Appd.

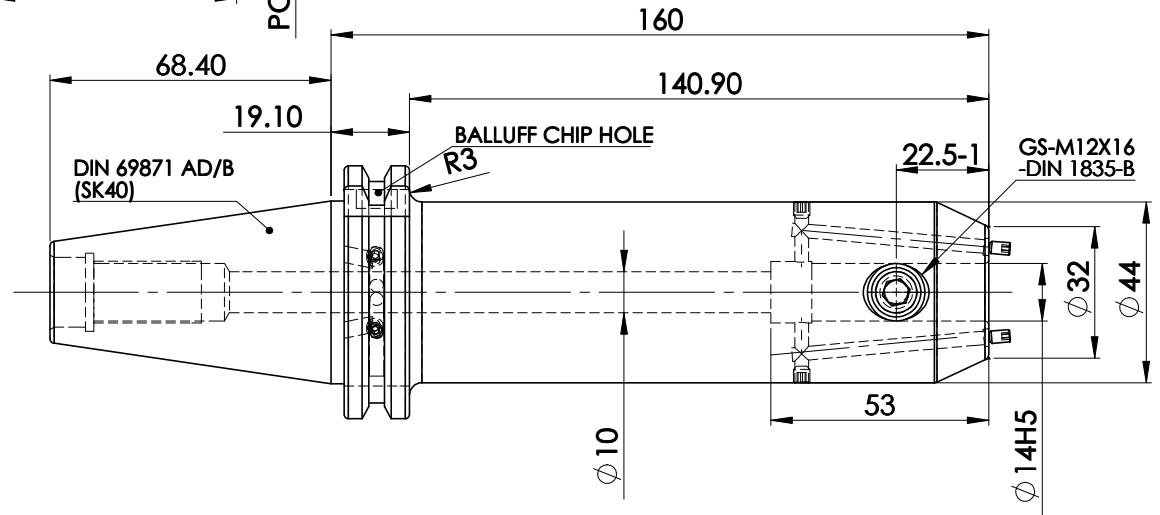
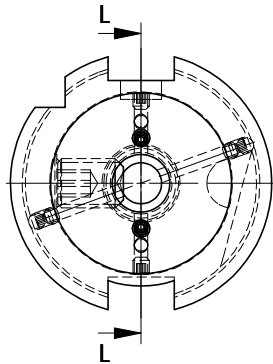


ALL SILVER LOOK



SCREWS TO BE PACKED SEPERATELY IN PLASTIC POUCH WITH LABEL & PUT INTO WELDON BORE & THEN SEAL THE HOLDER WITH COVER

LABEL FOR PLASTIC BAGS:
Verschlusschraube
Grub Screw
M4 X 4mm x 2 mm



Label :

2002306.1402
WELDON-AUFNAHME MIT KK
WELD.HOLDER COOL.CHANNEL
DIN69871 SK40 ADB
WK 14 mm x 160 mm
G2.5 / 25000 U/MIN

MARKING : DIN 69871 AD/B SK40 WK14H160
G2.5 25000 U/MIN

NOTE :
BALANCING 2.5G AT 25000 RPM
WEIGHT : 2.26 kgs

ITEM NO.	PART NUMBER	DESCRIPTION	QTY
1	FWS409H-EKH14160	SK40EK14160FWW	1
2	GS-M12x16	GRUB SCREW (B.O.)	1
3	GS-M4 x4	GRUB SCREW (B.O.)	6

	μ m	0.012	0.025	0.05	0.1	0.2	0.4	0.8	1.6	3.2	6.3	12.5	25	50
GRADES		N1	N2	N3	N4	N5	N6	N7	N8	N9	N10	N11	N12	
SYMBOLS		▽▽▽	▽▽	▽	▽	▽	▽	▽	▽	▽	▽	▽	▽	~
TOLERANCE FREE DIMENSIONS TOLERANCE	MATERIALS:	2019	NAME	DATE	<p>WEMAG 2002306.1402</p>									
Dimns. Dia Length	16MnCr5	DRAWN	PGK	20/06										
0.5 to 3 ± 0.05 ± 0.10	CHECKED	RVL	20/06											
3 to 6 ± 0.10 ± 0.15	APPROVED													
6 to 30 ± 0.15 ± 0.20	PART NAME:	SCALE: 2:1	QTY.:		DRAWING No.	REV.								
30 to 120 ± 0.20 ± 0.25	SK40EK14160FWW				FWS409H-EKH14160	00								
120 to 500 ± 0.30 ± 0.50														