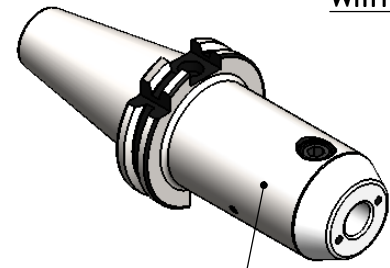


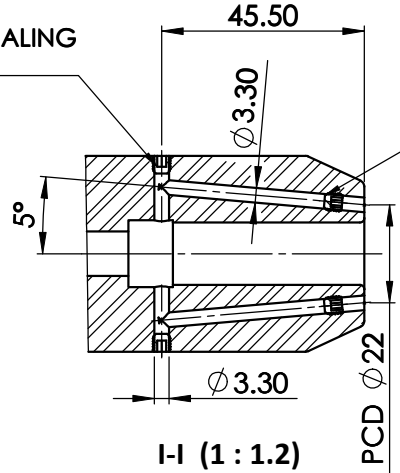
All Dimensions are in MM

Rev.No.	Ch.Lef	Alterations	Date	Sign.	Appd.



ALL SILVER LOOK

PERMNET SEALING WITH LOCTITE



SCREWS TO BE PACKED SEPERATELY IN PLASTIC POUCH WITH LABEL & PUT INTO WELDON BORE & THEN SEAL THE HOLDER WITH COVER

LABEL FOR PLASTIC BAGS:  
Verschlusschraube  
Grub Screw  
M4 X 4mm x 2 mm

CUSTOMER APPROVAL REQUIRED

APPROVED BY

DATE

FOR QUOTATION PURPOSE ONLY

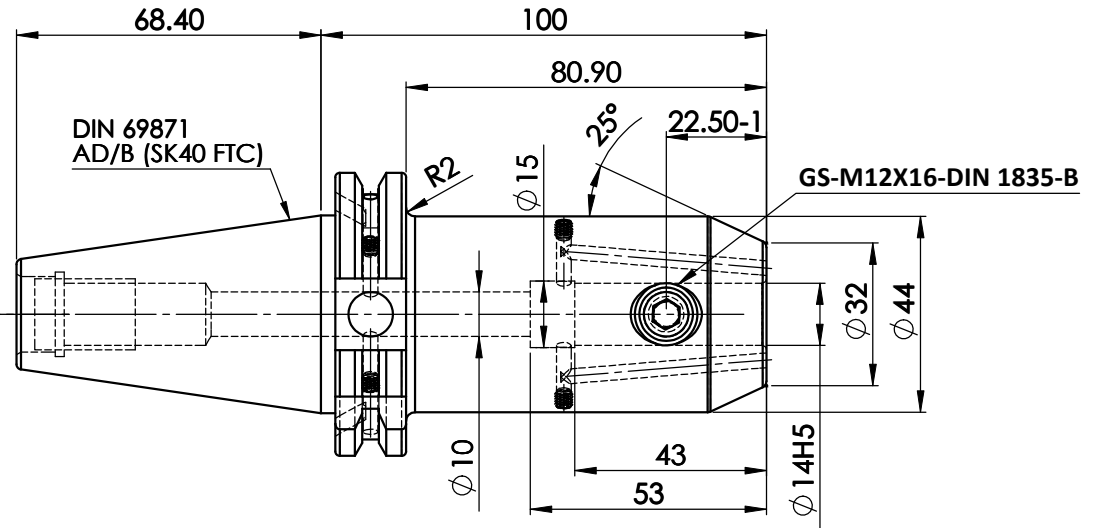
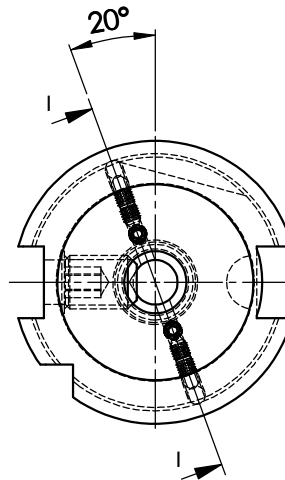
Label :  
9002306.1401  
WELDON-AUFNAHME MIT KK  
WELD.HOLDER COOL.CHANNEL  
DIN69871 SK40 ADB  
WK 14 mm x 100 mm  
G2.5 / 25000 U/MIN

MARKING : DIN 69871 AD/B SK40 WK14H100  
G2.5 25000 U/MIN

NOTE :

BALANCING 2.5G AT 25000 RPM

WEIGHT : 1.8 kg



ITEM NO.	PART NUMBER	DESCRIPTION	QTY
1	FWS409H-EKH14100	SK40EK14100FWW	1
2	GS-M12x16-DIN1835-B	GRUB SCREW (B.O.)	1
3	GS-M4x4	GRUB SCREW (B.O.)	6

	μ m	0.012	0.025	0.05	0.1	0.2	0.4	0.8	1.6	3.2	6.3	12.5	25	50
GRADES		N1	N2	N3	N4	N5	N6	N7	N8	N9	N10	N11	N12	
SYMBOLS		▽▽▽	▽▽	▽	▽	▽	▽	▽	▽	▽	▽	▽	▽	~
TOLERANCE	MATERIALS:	2016	NAME	DATE	<p style="text-align: center;"><b>WEMAG</b> <b>2002306.1401</b></p>									
FREE DIMENSIONS	16MnCr5	DRAWN	MHP	08/12										
TOLERANCE		CHECKED	RVL	08/12										
Dimns.		APPROVED	SSR	08/12										
0.5 to 3	± 0.05	± 0.10	SCALE: 2:1	QTY.:	DRAWING No.									
3 to 6	± 0.10	± 0.15	PART NAME:		REV.									
6 to 30	± 0.15	± 0.20	SK40EK14100FWW		00									
30 to 120	± 0.20	± 0.25												
120 to 500	± 0.30	± 0.50												