

CUSTOMER APPROVAL REQUIRED

APPROVED BY

DATE

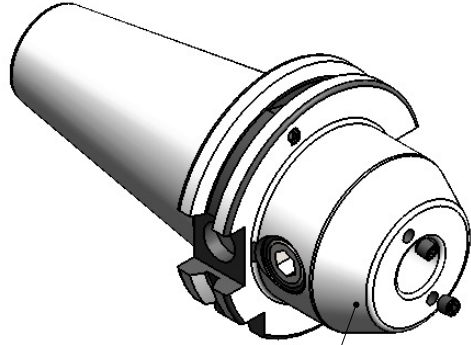
FOR QUOTATION PURPOSE ONLY

**All Dimensions are in MM**

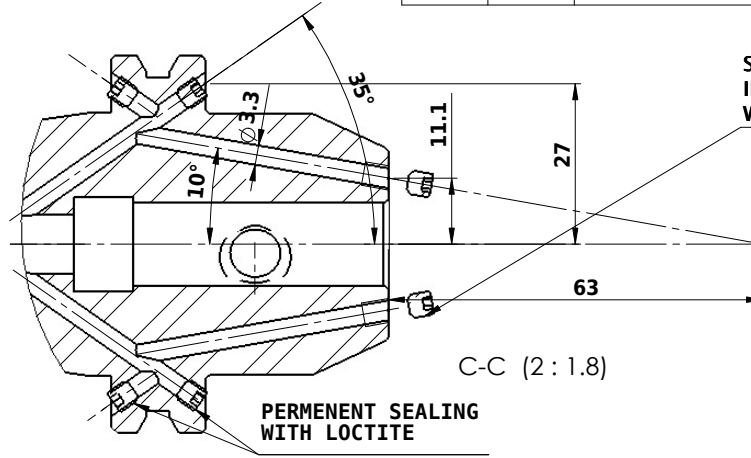
Rev.No.	Ch.Let	Alterations	Date	Sign.	Appd.

SCREWS TO BE PACKED SEPERATELY  
IN PLASTIC POUCH WITH LABEL & PUT INTO  
WELDON BORE & THEN SEAL THE HOLDER WITH COVER

**LABEL FOR PLASTIC BAGS:**  
Verschlusschraube  
Grub Screw  
M4 X 4mm x 2 mm

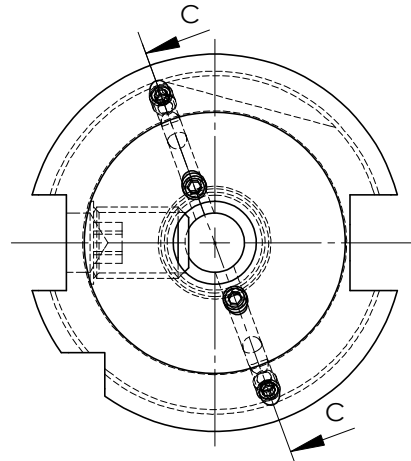


**ALL SILVER LOOK**

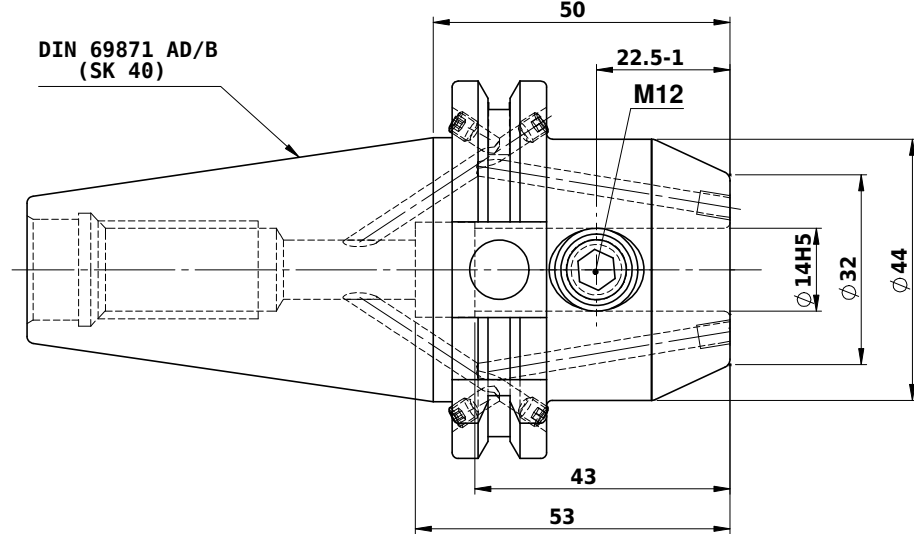


C-C (2:1.8)

PERMEMENT SEALING  
WITH LOCTITE



DIN 69871 AD/B  
(SK 40)



Label :  
2002306.1400  
WELDON-AUFNAHME MIT KK  
WELD.HOLDER COOL.CHANNEL  
DIN69871 SK40 ADB  
WK 14 mm x 50 mm  
G6.3 / 15000

**NOTE :**  
BALANCING 6.3G AT 15000 RPM  
WEIGHT : 1.3 kg

**MARKING :** DIN 69871 AD/B SK40 WK14H50  
G6.3 15000 U/MIN

ITEM NO.	PART NUMBER	DESCRIPTION	QTY.
1	BO	GRUB SCREW M4X4	6
2	SK40 EK 14 050 FTC WW.	END MILL HOLDER	1
3	B.O.	GS-M12X16-DIN1835-B	1

	μ m	0.012	0.025	0.05	0.1	0.2	0.4	0.8	1.6	3.2	6.3	12.5	25	50
GRADES		N1	N2	N3	N4	N5	N6	N7	N8	N9	N10	N11	N12	
SYMBOLS		▽▽▽	▽▽	▽	▽	▽	▽	▽	▽	▽	▽	▽	▽	~
TOLERANCE FREE DIMENSIONS TOLERANCE		2014		NAME		DATE								
Dimns.	Dia	16MnCr5		DRAWN		RPA		28/07						
0.5 to 3	± 0.05			CHECKED		RVL		28/07						
3 to 6	± 0.10			APPROVED										
6 to 30	± 0.15			SCALE :		NTS		QTY. :						
30 to 120	± 0.20			PART NAME:		END MILL HOLDER		DRAWING No. SK40 EK 14 050 FTC WW						
120 to 500	± 0.30			REV.		00								

**WEMAG**  
2002306.1400

REV. 00