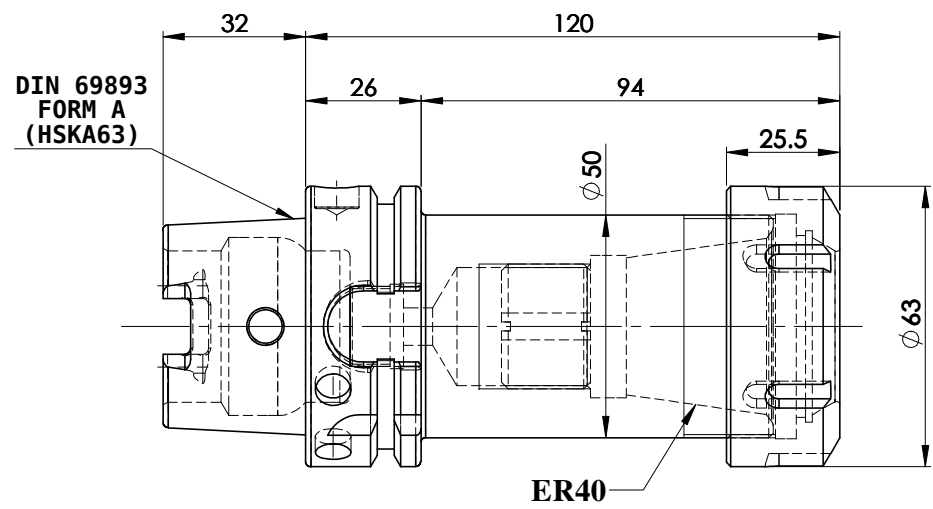
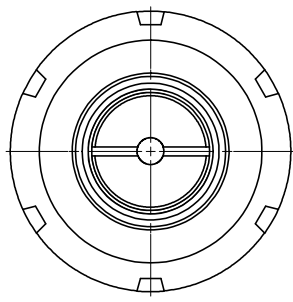
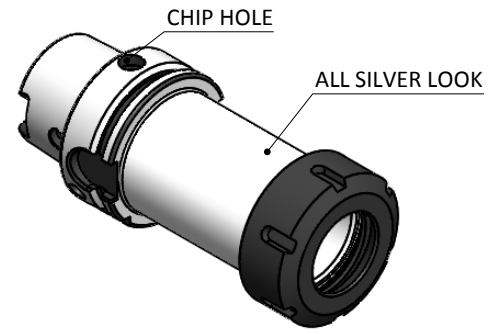


All Dimensions are in MM

Rev.No.	Ch.Let	Alterations	Date	Sign.	Appd.



LABEL :

**2002269.0701
SPANNZANGENAUFNAHME
ER COLLET CHUCK**

MARKING : DIN 69893 A HSK63A CCHER40 H120

BALANCING 2.5G AT 25000 RPM

WEIGHT : 1.4 Kg

ITEM NO.	PART NUMBER	DESCRIPTION	QTY.
1	FWA063H-ERS40120	HSKA63CCHER40120WW	1
2	NUTER40	COLLET NUT - ER40	1
3	SCWM28X1.5	STOPPER SCREW (B.O.)	1

μ m	0.012	0.025	0.05	0.1	0.2	0.4	0.8	1.6	3.2	6.3	12.5	25	50
GRADES	N1	N2	N3	N4	N5	N6	N7	N8	N9	N10	N11	N12	
SYMBOLS	▽▽▽▽▽▽▽▽▽▽▽▽												
TOLERANCE FREE DIMENSIONS TOLERANCE	2015		NAME		DATE		WEMAG 2002269.0701						
Dimns.	Dia	Length	DRAWN		29/06								
0.5 to 3	± 0.05	± 0.10	CHECKED		RVL								
3 to 6	± 0.10	± 0.15	APPROVED										
6 to 30	± 0.15	± 0.20	SCALE : NTS		QTY. :		PART NAME:		DRAWING No.		REV.		
30 to 120	± 0.20	± 0.25	HSKA63CCHER40120WW		FWA063H-ERS40120						00		
120 to 500	± 0.30	± 0.50											