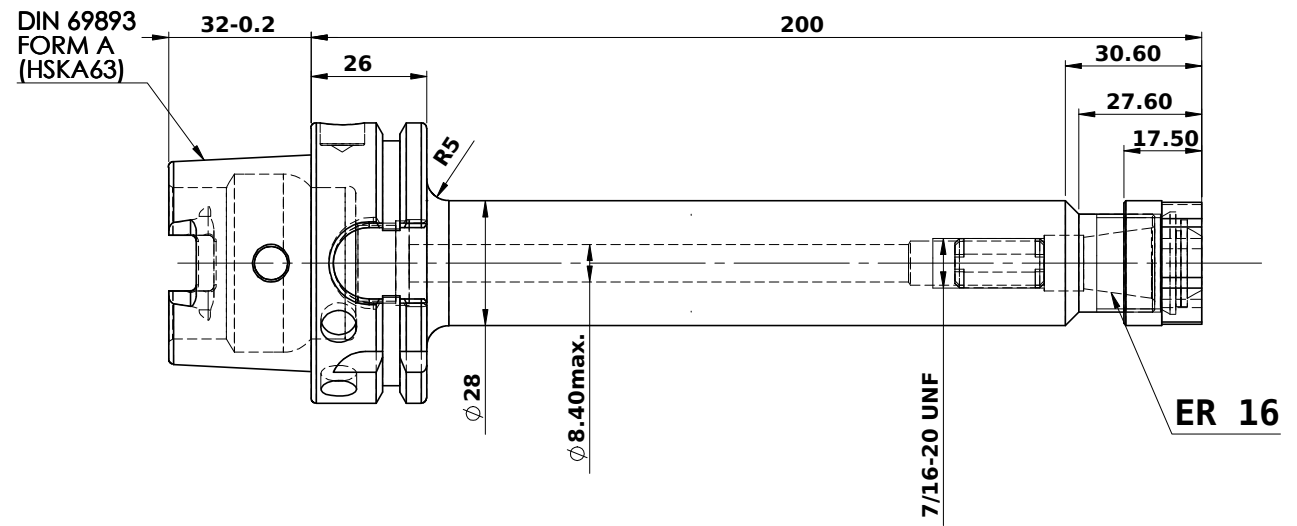
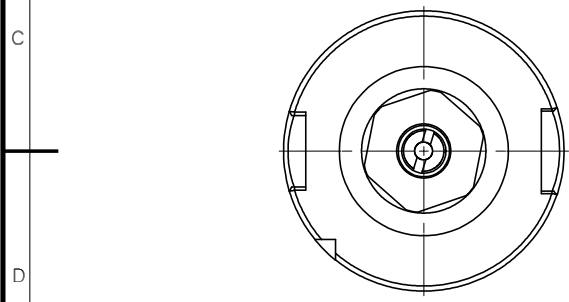
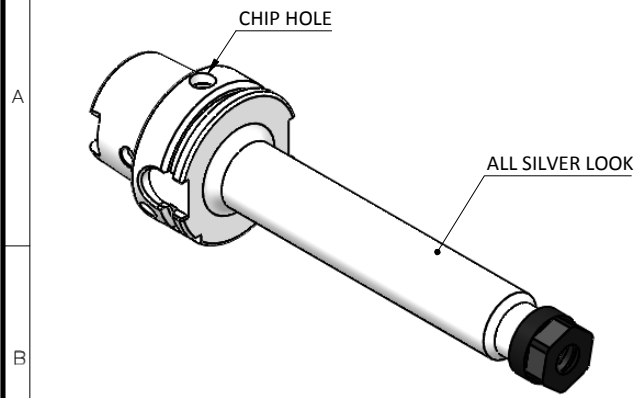


All Dimensions are in MM

Rev.No.	Ch.Let	Alterations	Date	Sign.	Appd.



LABEL :

2002269.0303
SPANNZANGENAUFNAHME
SECHSKANTMUTTER HEXAGONAL NUT
ER COLLET CHUCK

MARKING : DIN 69893 A HSK63A CCHER16 H200

BALANCING 2.5G AT 25000 RPM

WEIGHT : 1.33 Kg

ITEM NO.	PART NUMBER	DESCRIPTION	QTY.
1	FWA063H-ERS16200	HSKA63CCHER16200WW	1
2	SCW7/16-20UNF	STOPPER SCREW	1
3	NUTER16	COLLET NUT	1

µm	0.012	0.025	0.05	0.1	0.2	0.4	0.8	1.6	3.2	6.3	12.5	25	50
GRADES	N1	N2	N3	N4	N5	N6	N7	N8	N9	N10	N11	N12	
SYMBOLS	▽▽▽▽▽▽▽▽▽▽▽▽												
TOLERANCE	MATERIALS:			2019	NAME	DATE	WEMAG 2002269.0303						
FREE DIMENSIONS	16MnCr5			DRAWN	MVP	25/06							
TOLERANCE				CHECKED	MVP	25/06							
				APPROVED									
Dimns.	Dia	Length	PART NAME:			DRAWING No.		FWA063H-ERS16200					
0.5 to 3	±0.05	±0.10	HSKA63CCHER16200WW			REV.							
3 to 6	±0.10	±0.15				00							
6 to 30	±0.15	±0.20											
30 to 120	±0.20	±0.25											
120 to 500	±0.30	±0.50											