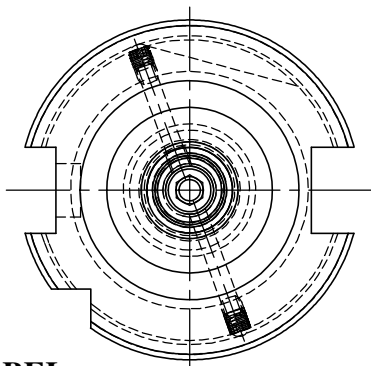
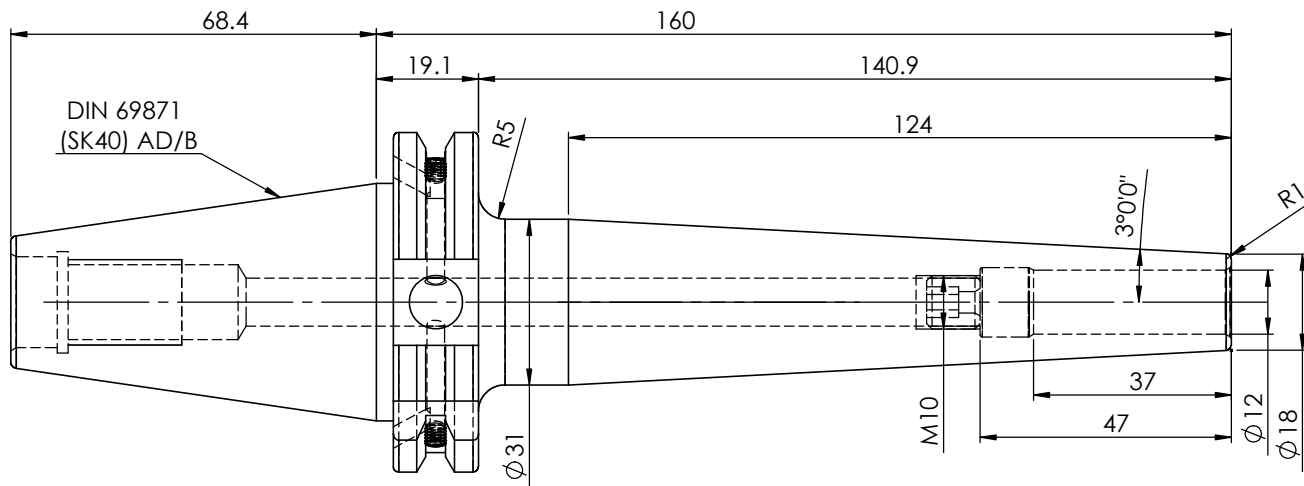
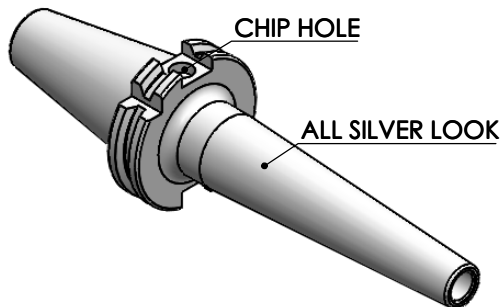


Rev.No.	Ch.Let	Alterations	Date	Sign.	Appd.

All Dimensions are in MM



LABEL:

2002267.1202
SCHRUMPFUTTER SCHLANK 3°
SHRINK FIT HOLDER SLIM 3°
ISO 7388-1 (DIN69871) SK40 AD/AF (AD+B)
SRS2 12mm X 160mm
G2.5/25000 U/MIN

MARKING: ISO 7388-1 (DIN69871) SK40 AD/AF (AD+B) SFHS12 H160
G2.5 25000 U/MIN

NOTE:

BALANCING : 2.5G @ 25000RPM

WEIGHT : 1.3 Kg

µm	0.012	0.025	0.05	0.1	0.2	0.4	0.8	1.6	3.2	6.3	12.5	25	50
GRADES	N1	N2	N3	N4	N5	N6	N7	N8	N9	N10	N11	N12	
SYMBOLS	▽▽▽			▽▽▽			▽▽			▽		~	
TOLERANCE	MATERIALS:		2023	NAME		DATE		WEMAG 2002267.1202					
FREE DIMENSIONS	HDS		DRAWN	SKK		14/06							
TOLERANCE			CHECKED	RVL		14/06							
			APPROVED										
Dimns.	Dia	Length	SCALE : NTS		QTY. :		PART NAME:						
0.5 to 3	±0.05	±0.10					SK40SFS12160FWW						
3 to 6	±0.10	±0.15					DRAWING No.						
6 to 30	±0.15	±0.20					FWS409H-SFS12160						
30 to 120	±0.20	±0.25					REV.						
120 to 500	±0.30	±0.50					00						

ITEM NO.	PART NUMBER	DESCRIPTION	QTY.
1	FWS409H-SFS12160	SK40SFS12160FWW	1
2	GS-M4X4	GRUB SCREW	2
3	SCWM10x1x10	STOPPER SCREW	1