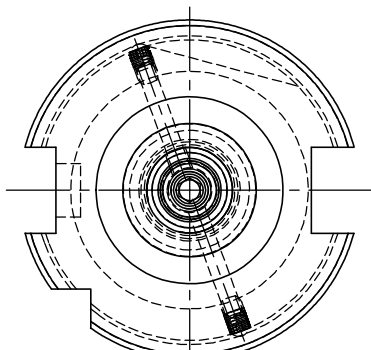
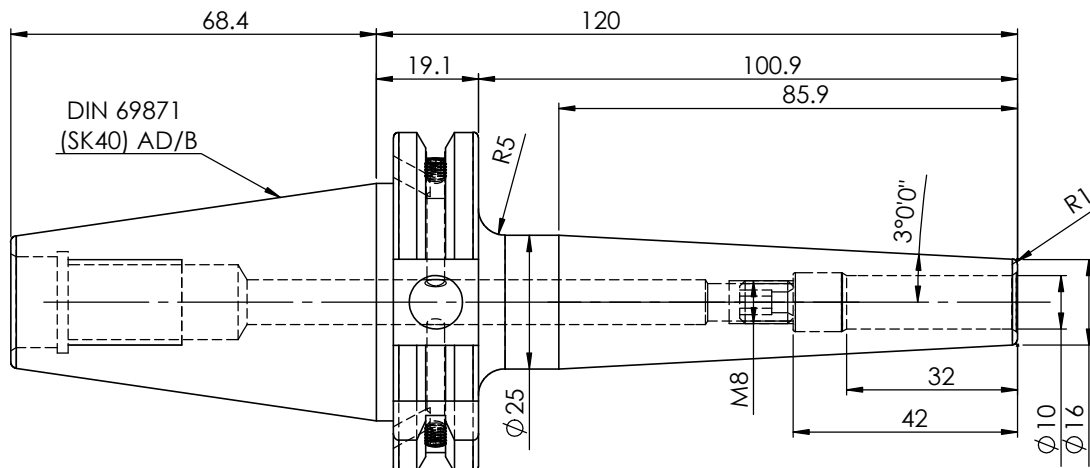
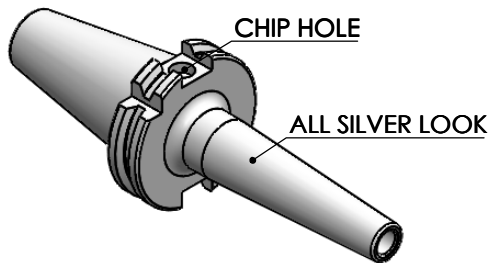


Rev.No.	Ch.Let	Alterations	Date	Sign.	Appd.

All Dimensions are in MM



LABEL:

2002267.1001
SCHRUMPFUTTER SCHLANK 3°
SHRINK FIT HOLDER SLIM 3°
ISO 7388-1 (DIN69871) SK40 AD/AF (AD+B)
SRS2 10mm X 120mm
G2.5/25000 U/MIN

MARKING: ISO 7388-1 (DIN69871) SK40 AD/AF (AD+B) SFHS10 H120
G2.5 25000 U/MIN

NOTE:

BALANCING : 2.5G @ 25000RPM

WEIGHT : 1.0 Kg

	µm	0.012	0.025	0.05	0.1	0.2	0.4	0.8	1.6	3.2	6.3	12.5	25	50		
GRADES		N1	N2	N3	N4	N5	N6	N7	N8	N9	N10	N11	N12			
SYMBOLS		▽▽▽	▽▽	▽	▽	▽	▽	▽	▽	▽	▽	▽	▽	~		
TOLERANCE	MATERIALS:	2023		NAME		DATE		WEMAG 2002267.1001								
FREE DIMENSIONS	HDS	DRAWN	SKK	14/06												
TOLERANCE		CHECKED	RVL	14/06												
		APPROVED														
Dimns.	Dia	Length	SCALE : NTS		QTY. :		PART NAME:							DRAWING No.		REV.
0.5 to 3	±0.05	±0.10					SK40SFS10120FWW							FWS409H-SFS10120		00
3 to 6	±0.10	±0.15														
6 to 30	±0.15	±0.20														
30 to 120	±0.20	±0.25														
120 to 500	±0.30	±0.50														

ITEM NO.	PART NUMBER	DESCRIPTION	QTY.
1	FWS409H-SFS10120	SK40SFS10120FWW	1
2	GS-M4X4	GRUB SCREW	2
3	SCWM8X1-10	STOPPER SCREW	1