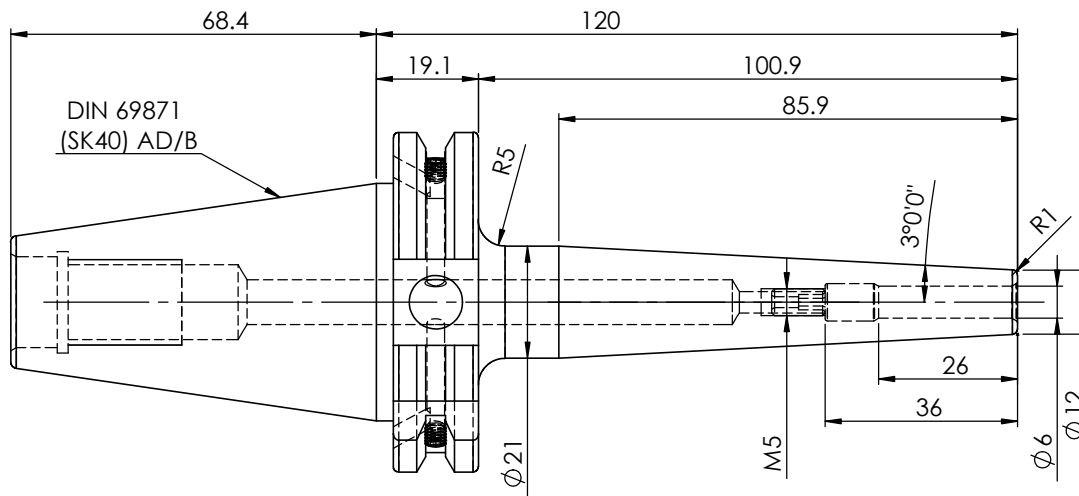
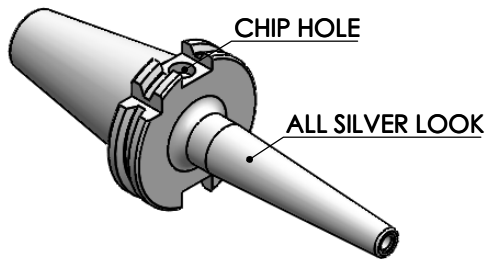


Rev.No.	Ch.Let	Alterations	Date	Sign.	Appd.

All Dimensions are in MM



DIN 69871  
(SK40) AD/B

**LABEL:**

**2002267.0601**  
**SCHRUMPFUTTER SCHLANK 3°**  
**SHRINK FIT HOLDER SLIM 3°**  
**ISO 7388-1 (DIN69871) SK40 AD/AF (AD+B)**  
**SRS2 06mm X 120mm**  
**G2.5/25000 U/MIN**

**NOTE:**

**BALANCING : 2.5G @ 25000RPM**

**WEIGHT : 1.0 Kg**

**MARKING: ISO 7388-1 (DIN69871) SK40 AD/AF (AD+B) SFHS06 H120**  
**G2.5 25000 U/MIN**

µm	0.012	0.025	0.05	0.1	0.2	0.4	0.8	1.6	3.2	6.3	12.5	25	50				
GRADES	N1	N2	N3	N4	N5	N6	N7	N8	N9	N10	N11	N12					
SYMBOLS	▽▽▽			▽▽▽			▽▽			▽		~					
TOLERANCE	MATERIALS:			2023		NAME		DATE									
FREE DIMENSIONS	HDS			DRAWN		SKK		14/06									
TOLERANCE	CHECKED			RVL		APPROVED		14/06									
Dimns.	Dia	Length	SCALE : NTS			QTY. :			<b>WEMAG</b> <b>2002267.0601</b>								
0.5 to 3	±0.05	±0.10	PART NAME:			DRAWING No.									REV.		
3 to 6	±0.10	±0.15	SK40SFS06120FWW			FWS409H-SFS06120									00		
6 to 30	±0.15	±0.20	DRAWING No.			REV.											
30 to 120	±0.20	±0.25	SCALE : NTS			QTY. :											
120 to 500	±0.30	±0.50															

ITEM NO.	PART NUMBER	DESCRIPTION	QTY.
1	FWS409H-SFS06120	SK40SFS06120FWW	1
2	GS-M4X4	GRUB SCREW	2
3	SCWM5x10	STOPPER SCREW	1