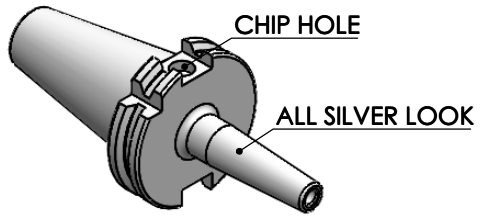
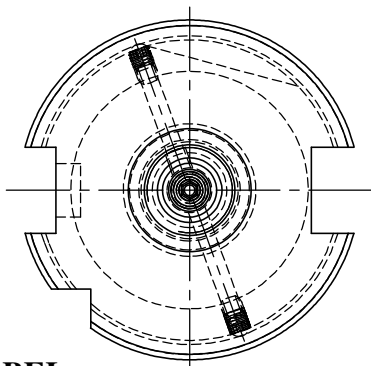
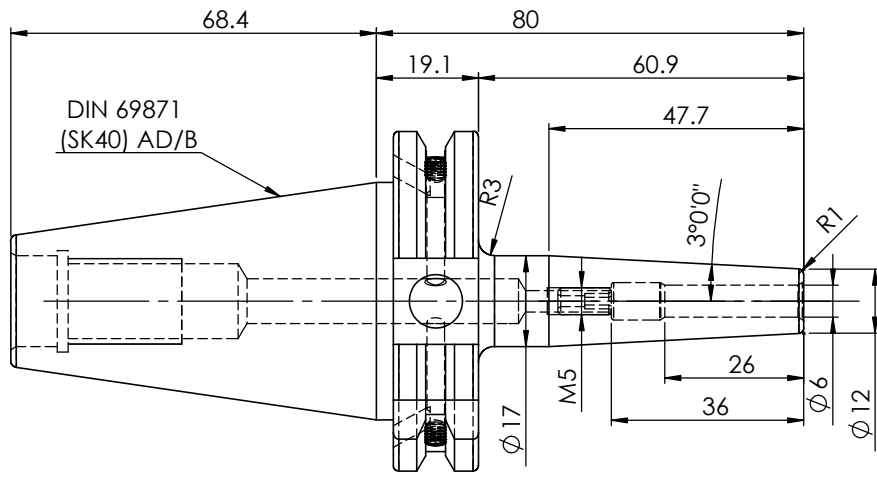


Rev.No.	Ch.Let	Alterations	Date	Sign.	Appd.



All Dimensions are in MM



LABEL:

2002267.0600
SCHRUMPFUTTER SCHLANK 3°
SHRINK FIT HOLDER SLIM 3°
ISO 7388-1 (DIN69871) SK40 AD/AF (AD+B)
SRS2 06mm X 080mm
G2.5/25000 U/MIN

MARKING: ISO 7388-1 (DIN69871) SK40 AD/AF (AD+B) SFHS06 H080
G2.5 25000 U/MIN

NOTE:

BALANCING : 2.5G @ 25000RPM

WEIGHT : 0.9 Kg

µm	0.012	0.025	0.05	0.1	0.2	0.4	0.8	1.6	3.2	6.3	12.5	25	50
GRADES	N1	N2	N3	N4	N5	N6	N7	N8	N9	N10	N11	N12	
SYMBOLS	▽▽▽			▽▽▽			▽▽			▽		~	
TOLERANCE	MATERIALS:			2023		NAME		DATE					
FREE DIMENSIONS	HDS			DRAWN		BPK		14/06					
TOLERANCE	CHECKED			RVL		APPROVED		14/06					
Dimns.	Dia	Length	SCALE : NTS		QTY. :		WEMAG 2002267.0600 DRAWING No. FWS409H-SFS06080 REV. 00						
0.5 to 3	±0.05	±0.10	PART NAME:		SK40SFS06080FWW								
3 to 6	±0.10	±0.15	DRAWING No.		FWS409H-SFS06080								
6 to 30	±0.15	±0.20	REV.		00								
30 to 120	±0.20	±0.25											
120 to 500	±0.30	±0.50											

ITEM NO.	PART NUMBER	DESCRIPTION	QTY.
1	FWS409H-SFS06080	SK40SFS06080FWW	1
2	GS-M4X4	GRUB SCREW	2
3	SCWM5x10	STOPPER SCREW	1