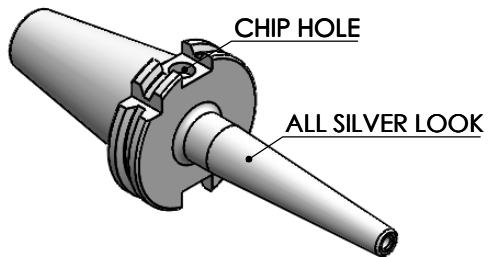
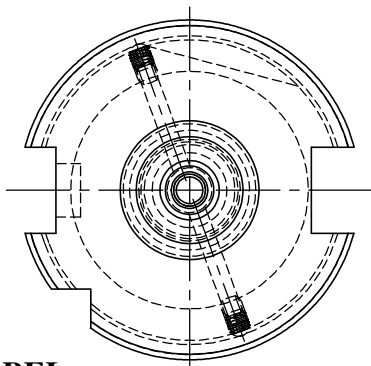
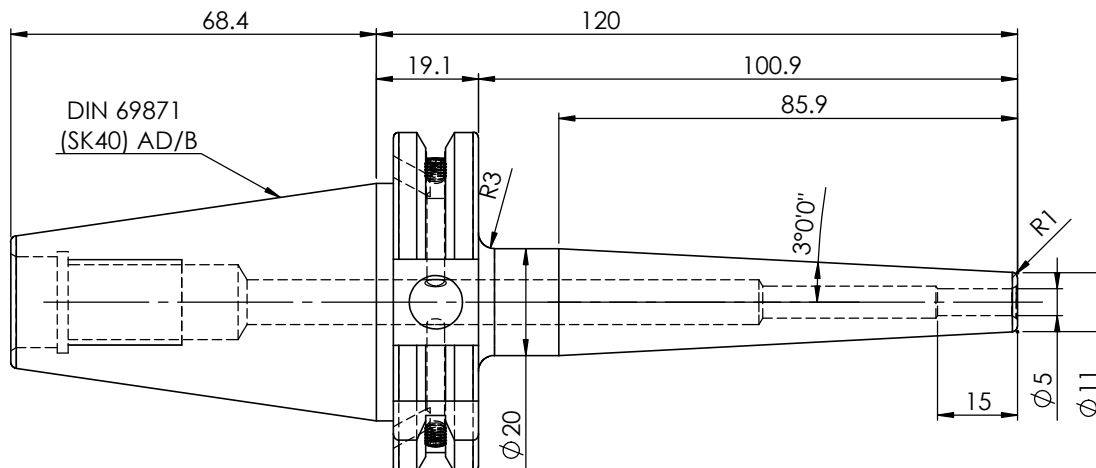


Rev.No.	Ch.Let	Alterations	Date	Sign.	Appd.



All Dimensions are in MM



**LABEL:**

**2002267.0501**  
**SCHRUMPFUTTER SCHLANK 3°**  
**SHRINK FIT HOLDER SLIM 3°**  
**ISO 7388-1 (DIN69871) SK40 AD/AF (AD+B)**  
**SRS2 05mm X 120mm**  
**G2.5/25000 U/MIN**

**NOTE:**

**BALANCING : 2.5G @ 25000RPM**

**WEIGHT : 0.9 Kg**

**MARKING: ISO 7388-1 (DIN69871) SK40 AD/AF (AD+B) SFHS05 H120**  
**G2.5 25000 U/MIN**

	µm	0.012	0.025	0.05	0.1	0.2	0.4	0.8	1.6	3.2	6.3	12.5	25	50		
GRADES		N1	N2	N3	N4	N5	N6	N7	N8	N9	N10	N11	N12			
SYMBOLS		▽▽▽	▽▽	▽	▽	▽	▽	▽	▽	▽	▽	▽	▽	~		
TOLERANCE	MATERIALS:	2023		NAME		DATE		<b>WEMAG</b> <b>2002267.0501</b>								
FREE DIMENSIONS	HDS	DRAWN	SKK		14/06											
TOLERANCE		CHECKED	RWL		14/06											
		APPROVED														
Dimns.	Dia	Length	SCALE : NTS		QTY. :		<b>PART NAME:</b> SK40SFS05120FWW							<b>DRAWING No.</b> FWS409H-SFS05120		<b>REV.</b> 00
0.5 to 3	±0.05	±0.10														
3 to 6	±0.10	±0.15														
6 to 30	±0.15	±0.20														
30 to 120	±0.20	±0.25														
120 to 500	±0.30	±0.50														

ITEM NO.	PART NUMBER	DESCRIPTION	QTY.
1	FWS409H-SFS05120	SK40SFS05120FWW	1
2	GS-M4X4	GRUB SCREW	2