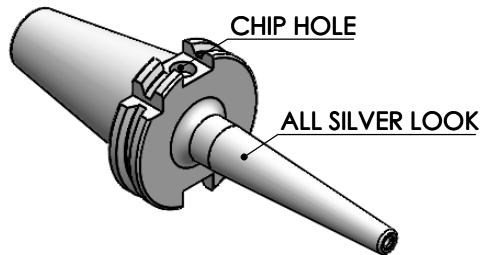
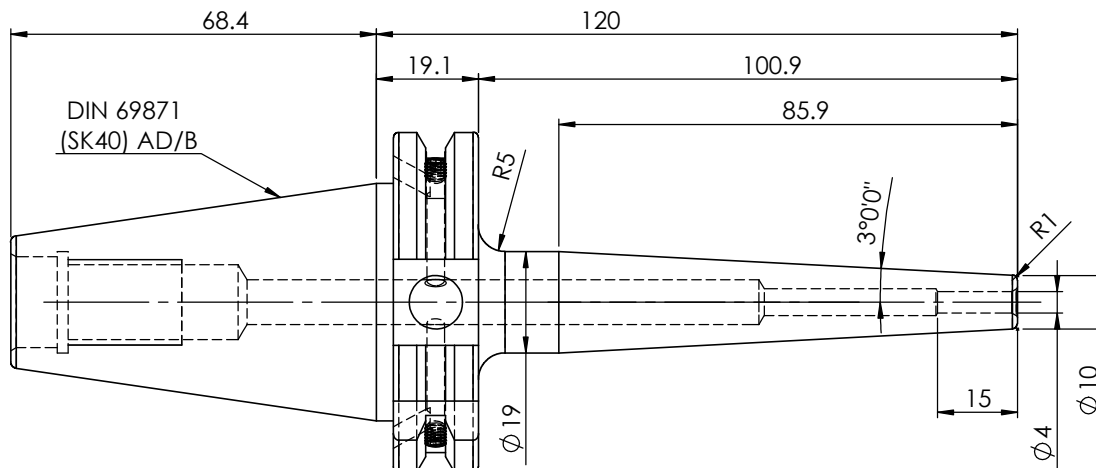


Rev.No.	Ch.Let	Alterations	Date	Sign.	Appd.



All Dimensions are in MM



DIN 69871  
(SK40) AD/B

**LABEL:**

**2002267.0401**  
**SCHRUMPFUTTER SCHLANK 3°**  
**SHRINK FIT HOLDER SLIM 3°**  
**ISO 7388-1 (DIN69871) SK40 AD/AF (AD+B)**  
**SRS2 04mm X 120mm**  
**G2.5/25000 U/MIN**

**NOTE:**

**BALANCING : 2.5G @ 25000RPM**

**WEIGHT : 0.9 Kg**

**MARKING: ISO 7388-1 (DIN69871) SK40 AD/AF (AD+B) SFHS04 H120**  
**G2.5 25000 U/MIN**

	µm	0.012	0.025	0.05	0.1	0.2	0.4	0.8	1.6	3.2	6.3	12.5	25	50	
GRADES		N1	N2	N3	N4	N5	N6	N7	N8	N9	N10	N11	N12		
SYMBOLS		▽▽▽	▽▽	▽	▽	▽	▽	▽	▽	▽	▽	▽	▽	~	
TOLERANCE	MATERIALS:	2023		NAME		DATE		<b>WEMAG</b> <b>2002267.0401</b>							
FREE DIMENSIONS	HDS	DRAWN	SKK		14/06										
TOLERANCE		CHECKED	RVL		14/06										
		APPROVED													
Dimns.	Dia	Length	SCALE : NTS		QTY. :		PART NAME:							DRAWING No.	REV.
0.5 to 3	±0.05	±0.10					SK40SFS04120FWW							FWS409H-SFS04120	00
3 to 6	±0.10	±0.15													
6 to 30	±0.15	±0.20													
30 to 120	±0.20	±0.25													
120 to 500	±0.30	±0.50													

ITEM NO.	PART NUMBER	DESCRIPTION	QTY.
1	FWS409H-SFS04120	SK40SFS04120FWW	1
2	GS-M4X4	GRUB SCREW	2