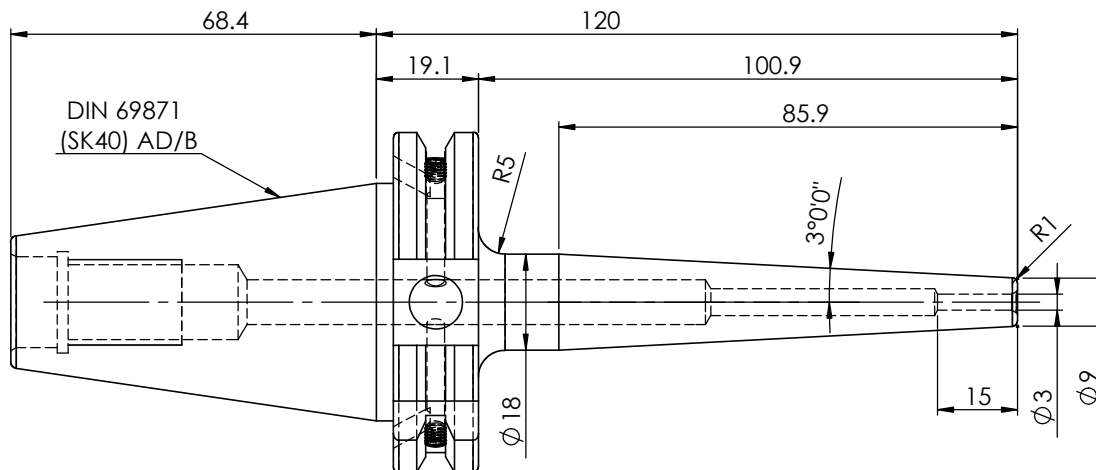
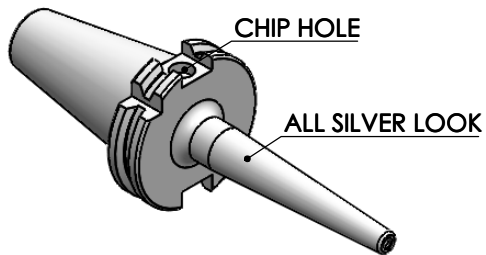


Rev.No.	Ch.Let	Alterations	Date	Sign.	Appd.

All Dimensions are in MM



DIN 69871
(SK40) AD/B

LABEL:

2002267.0301
SCHRUMPFUTTER SCHLANK 3°
SHRINK FIT HOLDER SLIM 3°
ISO 7388-1 (DIN69871) SK40 AD/AF (AD+B)
SRS2 03mm X 120mm
G2.5/25000 U/MIN

NOTE:

BALANCING : 2.5G @ 25000RPM

WEIGHT : 0.9 Kg

MARKING: ISO 7388-1 (DIN69871) SK40 AD/AF (AD+B) SFHS03 H120
G2.5 25000 U/MIN

	µ m	0.012	0.025	0.05	0.1	0.2	0.4	0.8	1.6	3.2	6.3	12.5	25	50			
GRADES		N1	N2	N3	N4	N5	N6	N7	N8	N9	N10	N11	N12				
SYMBOLS		▽▽▽	▽▽	▽	▽	▽	▽	▽	▽	▽	▽	▽	▽	~			
TOLERANCE	MATERIALS:	2023	NAME	DATE	WEMAG 2002267.0301												
FREE DIMENSIONS	HDS	DRAWN	SKK	14/06													
TOLERANCE		CHECKED	RVL	14/06													
		APPROVED															
Dimns.	Dia	Length	SCALE : NTS		QTY. :		PART NAME:								DRAWING No.		REV.
0.5 to 3	±0.05	±0.10					SK40SFS03120FWW								FWS409H-SFS03120		00
3 to 6	±0.10	±0.15															
6 to 30	±0.15	±0.20															
30 to 120	±0.20	±0.25															
120 to 500	±0.30	±0.50															

ITEM NO.	PART NUMBER	DESCRIPTION	QTY.
1	FWS409H-SFS03120	SK40SFS03120FWW	1
2	GS-M4X4	GRUB SCREW	2