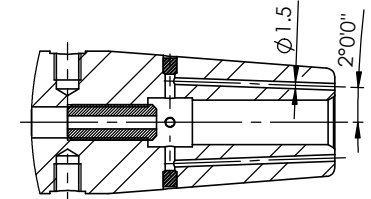
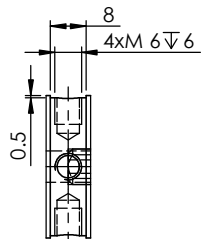
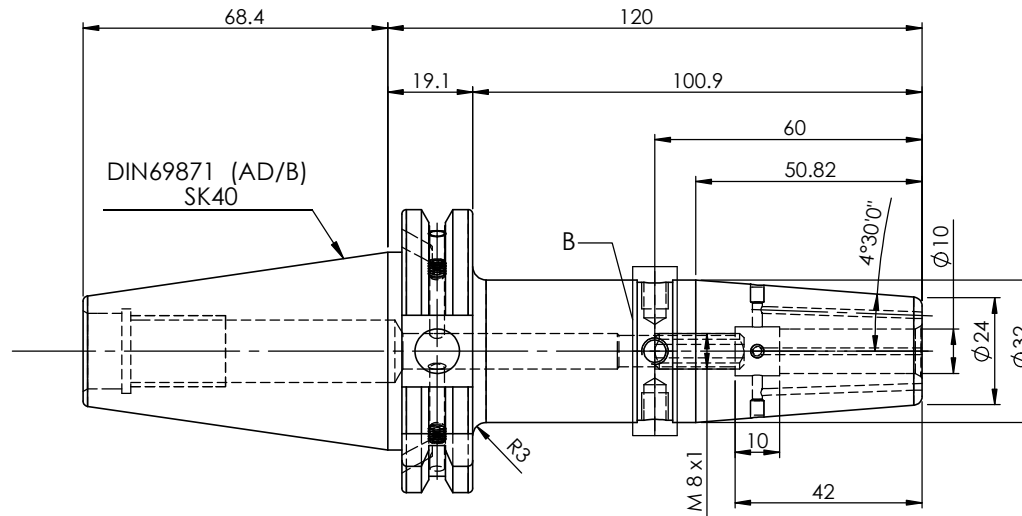
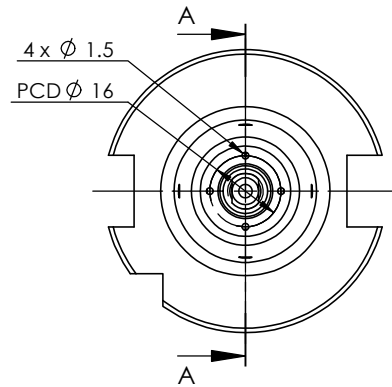


All Dimensions are in MM

Rev.No.	Ch.Let	Alterations	Date	Sign.	Appd.



SECTION A-A



DETAIL B

LABEL :
2002266.1001
SCHRUMPFUTTER MIT KK
SHRINK FIT HOLDER COOLANT CHANNEL
ISO 7388-1 (DIN69871) SK40 AD/AF (AD+B)
SR4 10mm X 120mm
G2,5/25000 U/MIN

MARKING : ISO 7388-1 (DIN69871) SK40 AD/AF (AD+B) SFHC10H120
G2,5/25000 U/MIN

NOTE :
BALANCING 2.5G@ 25000 RPM

Weight : 1.3 Kg

ITEM NO.	PART NUMBER	DESCRIPTION	QTY.
1	F1S409H-SFK10120	SK40SFK10120FWW	1
2	SCWM8X1X20-FLAT	STOPPER SCREW	1
3	EXPANDER PLUG-22880.0053	EXPANDER PLUG-Ø3x3.6mm	4
4	GS-M4X4	GRUB SCREW	2

μm	0.012	0.025	0.05	0.1	0.2	0.4	0.8	1.6	3.2	6.3	12.5	25	50
GRADES	N1	N2	N3	N4	N5	N6	N7	N8	N9	N10	N11	N12	
SYMBOLS	▽▽▽			▽▽▽			▽▽			▽			~
TOLERANCE FREE DIMENSIONS	TOLERANCE		MATERIALS:		2022	NAME	DATE	WEMAG 2002266.1001					
			HDS		DRAWN	SVR	29/01						
Dimns.	Dia	Length			CHECKED	RVL	29/01						
					APPROVED								
0.5 to 3	± 0.05	± 0.10			SCALE : NTS		QTY. :	DRAWING No. F1S409H-SFK10120					
3 to 6	± 0.10	± 0.15											
6 to 30	± 0.15	± 0.20											
30 to 120	± 0.20	± 0.25											
120 to 500	± 0.30	± 0.50						REV. 00					