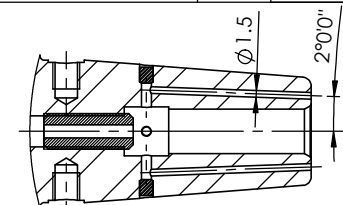
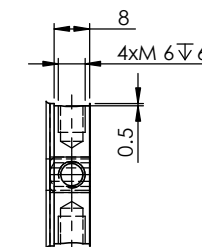
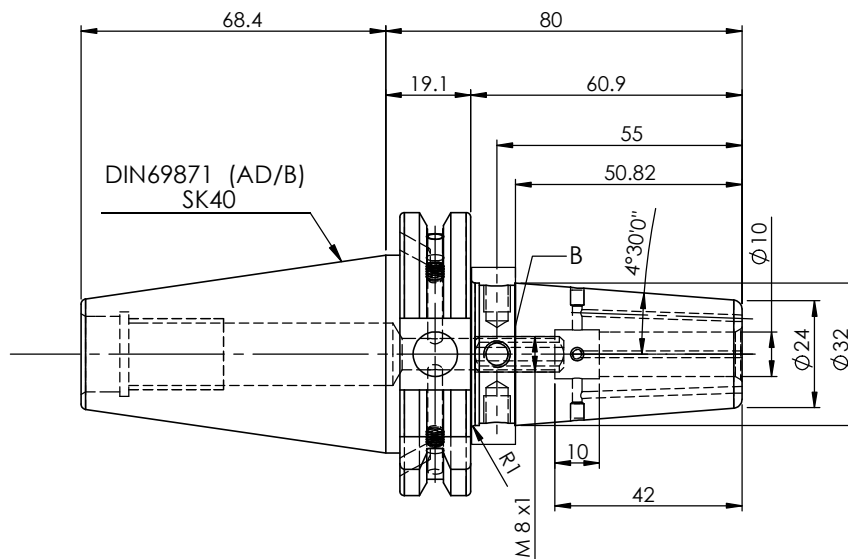
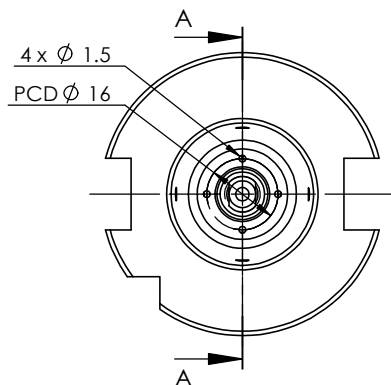


All Dimensions are in MM

Rev.No.	Ch.Let	Alterations	Date	Sign.	Appd.



SECTION A-A



DETAIL B

LABEL :
2002266.1000
SCHRUMPFUTTER MIT KK
SHRINK FIT HOLDER COOLANT CHANNEL
ISO 7388-1 (DIN69871) SK40 AD/AF (AD+B)
SR4 10mm X 080mm
G2,5/25000 U/MIN

NOTE :
BALANCING 2.5G@ 25000 RPM

Weight : 1.0 Kg

MARKING : ISO 7388-1 (DIN69871) SK40 AD/AF (AD+B) SFHC10H080
G2,5/25000 U/MIN

ITEM NO.	PART NUMBER	DESCRIPTION	QTY.
1	F1S409H-SFK10080	SK40SFK10080FWW	1
2	SCWM8X1X20-FLAT	STOPPER SCREW	1
3	EXPANDER PLUG-22880.0053	EXPANDER PLUG- $\phi 3 \times 3.6$ mm	4
4	GS-M4X4	GRUB SCREW	2

	μ m	0.012	0.025	0.05	0.1	0.2	0.4	0.8	1.6	3.2	6.3	12.5	25	50
GRADES		N1	N2	N3	N4	N5	N6	N7	N8	N9	N10	N11	N12	
SYMBOLS		▽▽▽	▽▽	▽	▽	▽	▽	▽	▽	▽	▽	▽	▽	~
TOLERANCE FREE DIMENSIONS		2022		NAME		DATE		WEMAG 2002266.1000						
TOLERANCE		HDS		DRAWN SVR		29/01								
Dimns.	Dia	Length	CHECKED RVL		29/01									
SCALE : NTS		QTY. :												
PART NAME:								DRAWING No.		REV.				
SK40SFK10080FWW								F1S409H-SFK10080		00				