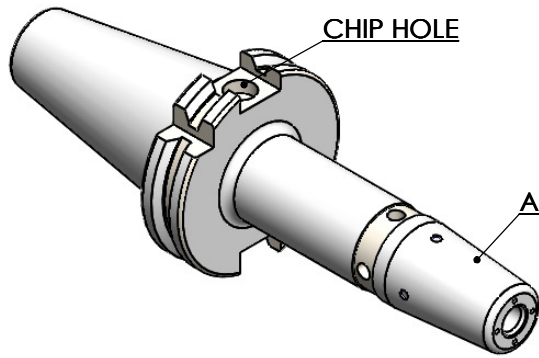
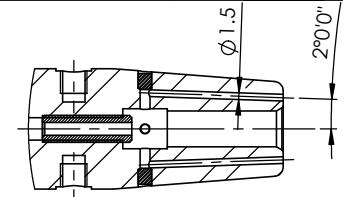


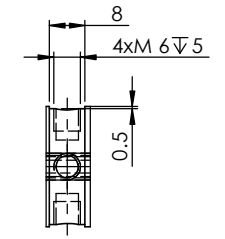
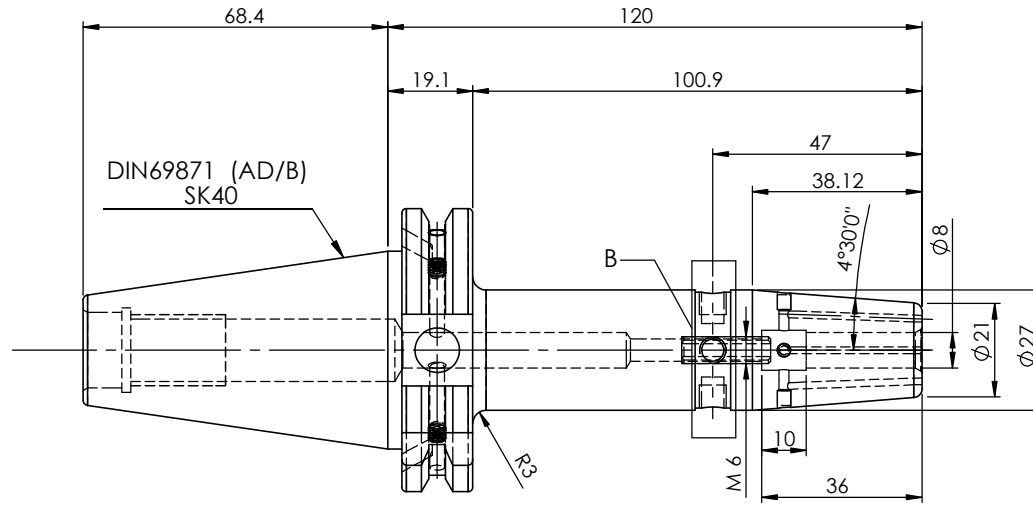
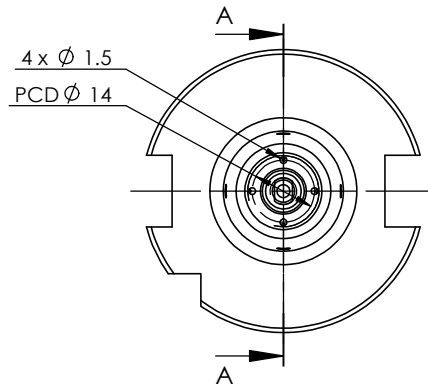
Rev.No.	Ch.Let	Alterations	Date	Sign.	Appd.



**All Dimensions are in MM**



SECTION A-A



DETAIL B

**LABEL :**  
**2002266.0801**  
**SCHRUMPFUTTER MIT KK**  
**SHRINK FIT HOLDER COOLANT CHANNEL**  
**ISO 7388-1 (DIN69871) SK40 AD/AF (AD+B)**  
**SR4 08mm X 120mm**  
**G2,5/25000 U/MIN**

**NOTE :**  
**BALANCING 2.5G@ 25000 RPM**

**Weight : 1.1 Kg**

**MARKING : ISO 7388-1 (DIN69871) SK40 AD/AF (AD+B) SFHC08H120**  
**G2,5/25000 U/MIN**

ITEM NO.	PART NUMBER	DESCRIPTION	QTY.
1	F1S409H-SFK08120	SK40SFK08120FWW	1
2	SCWM6x1x20-FLAT	STOPPER SCREW (B.O.)	1
3	EXPANDER PLUG-22880.0053	EXPANDER PLUG-Ø3x3.6mm	4
4	GS-M4X4	GRUB SCREW	2

µ m	0.012	0.025	0.05	0.1	0.2	0.4	0.8	1.6	3.2	6.3	12.5	25	50											
GRADES	N1		N2		N3		N4		N5		N6		N7		N8		N9		N10		N11		N12	
SYMBOLS	▽▽▽▽				▽▽▽▽				▽▽▽▽				▽▽▽▽				▽				~			
<b>TOLERANCE FREE DIMENSIONS</b>		<b>TOLERANCE</b>		<b>MATERIALS:</b>		<b>2022</b>		<b>NAME</b>		<b>DATE</b>		<p align="center"><b>WEMAG</b> <b>2002266.0801</b></p>												
Dimns.		Dia		Length		HDS		DRAWN		SVR												29/01		
0.5 to 3		± 0.05		± 0.10				CHECKED		RVL												29/01		
3 to 6		± 0.10		± 0.15				APPROVED																
6 to 30		± 0.15		± 0.20				SCALE : NTS		QTY. :		<p><b>PART NAME:</b> <b>SK40SFK08120FWW</b></p>												
30 to 120		± 0.20		± 0.25								<p><b>DRAWING No.</b> F1S409H-SFK08120</p>												
120 to 500		± 0.30		± 0.50								<p><b>REV.</b> 00</p>												