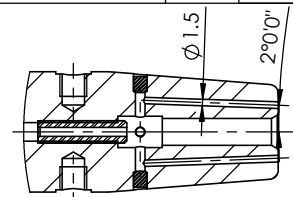
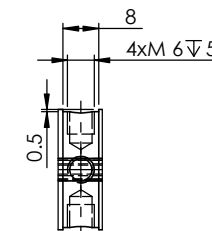
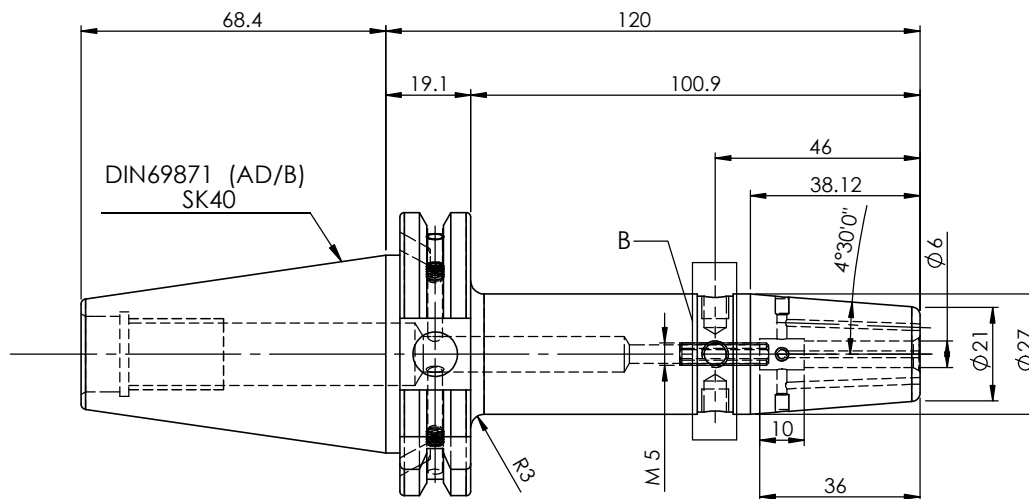
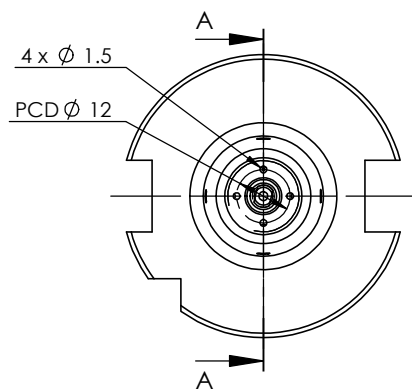


**All Dimensions are in MM**

Rev.No.	Ch.Let	Alterations	Date	Sign.	Appd.



SECTION A-A



DETAIL B

**LABEL :**  
**2002266.0601**  
**SCHRUMPFUTTER MIT KK**  
**SHRINK FIT HOLDER COOLANT CHANNEL**  
**ISO 7388-1 (DIN69871) SK40 AD/AF (AD+B)**  
**SR4 06mm X 120mm**  
**G2,5/25000 U/MIN**

**NOTE :**  
**BALANCING 2.5G@ 25000 RPM**

**Weight : 1.1 Kg**

**MARKING : ISO 7388-1 (DIN69871) SK40 AD/AF (AD+B) SFHC06H120**  
**G2,5/25000 U/MIN**

ITEM NO.	PART NUMBER	DESCRIPTION	QTY.
1	F1S409H-SFK06120	SK40SFK06120FWW	1
2	SCWM5x0.8x20-FLAT	STOPPER SCREW	1
3	EXPANDER PLUG-22880.0053	EXPANDER PLUG-Ø3x3.6mm	4
4	GS-M4X4	GRUB SCREW	2

µ m	0.012	0.025	0.05	0.1	0.2	0.4	0.8	1.6	3.2	6.3	12.5	25	50
GRADES	N1	N2	N3	N4	N5	N6	N7	N8	N9	N10	N11	N12	
SYMBOLS	▽▽▽			▽▽▽			▽▽			▽			~
TOLERANCE FREE DIMENSIONS TOLERANCE	2022		NAME		DATE		<b>WEMAG</b> <b>2002266.0601</b>						
Dimns.	Dia	Length	DRAWN SVR		29/01								
0.5 to 3	± 0.05	± 0.10	CHECKED RVL		29/01								
3 to 6	± 0.10	± 0.15	APPROVED										
6 to 30	± 0.15	± 0.20	SCALE : NTS		QTY. :		<b>PART NAME:</b> <b>SK40SFK06120FWW</b>						
30 to 120	± 0.20	± 0.25	DRAWING No.		REV.		<b>F1S409H-SFK06120</b>						
120 to 500	± 0.30	± 0.50	DRAWING No.		REV.		<b>00</b>						