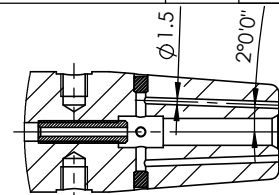
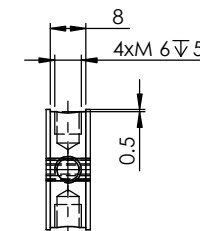
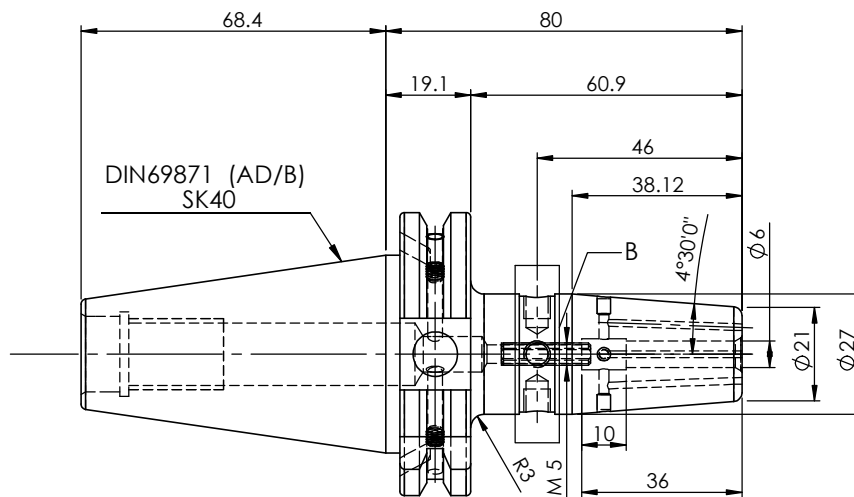
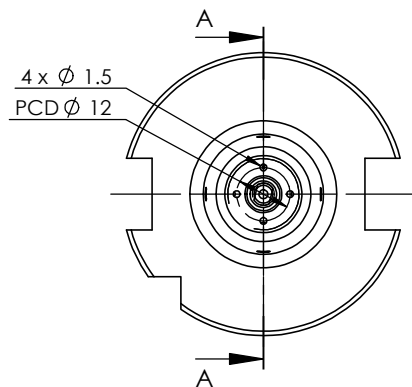


All Dimensions are in MM

Rev.No.	Ch.Let	Alterations	Date	Sign.	Appd.



SECTION A-A



DETAIL B

LABEL :
2002266.0600
SCHRUMPFUTTER MIT KK
SHRINK FIT HOLDER COOLANT CHANNEL
ISO 7388-1 (DIN69871) SK40 AD/AF (AD+B)
SR4 06mm X 080mm
G2,5/25000 U/MIN

NOTE :
BALANCING 2.5G@ 25000 RPM

Weight : 1.0 Kg

MARKING : ISO 7388-1 (DIN69871) SK40 AD/AF (AD+B) SFHC06H080
G2,5/25000 U/MIN

ITEM NO.	PART NUMBER	DESCRIPTION	QTY.
1	F1S409H-SFK06080	SK40SFK06080FWW	1
2	SCWM5x0.8x20-FLAT	STOPPER SCREW	1
3	GS-M4X4	GRUB SCREW	2
4	EXPANDER PLUG-22880.0053	EXPANDER PLUG-Ø3x3.6mm	4

μ m	0.012	0.025	0.05	0.1	0.2	0.4	0.8	1.6	3.2	6.3	12.5	25	50	
GRADES	N1		N2	N3	N4	N5	N6	N7	N8	N9	N10	N11	N12	
SYMBOLS	▽▽▽			▽▽			▽			~				
TOLERANCE FREE DIMENSIONS TOLERANCE		MATERIALS:		2022		NAME		DATE						
Dimns.	Dia	Length	HDS		DRAWN		SVR		29/01					
0.5 to 3	± 0.05	± 0.10			CHECKED		RVL		29/01					
3 to 6	± 0.10	± 0.15			APPROVED									
6 to 30	± 0.15	± 0.20			SCALE :		NTS		QTY. :					
30 to 120	± 0.20	± 0.25			PART NAME:						DRAWING No.		REV.	
120 to 500	± 0.30	± 0.50			SK40SFK06080FWW						F1S409H-SFK06080		00	

WEMAG
2002266.0600