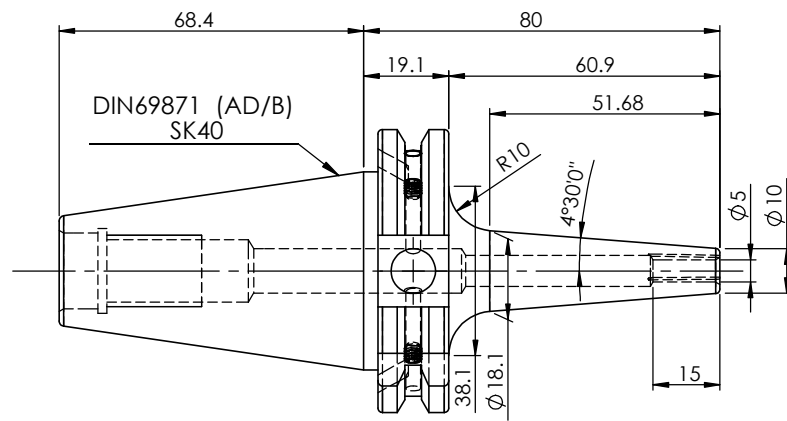
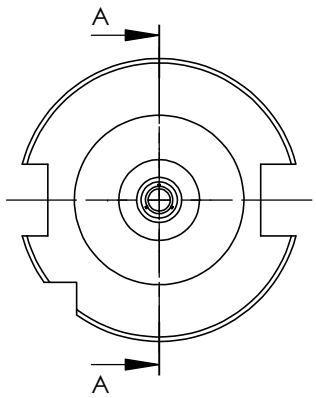
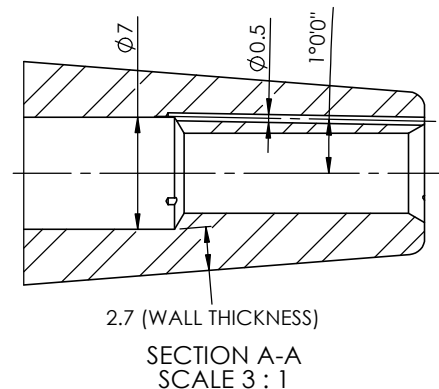
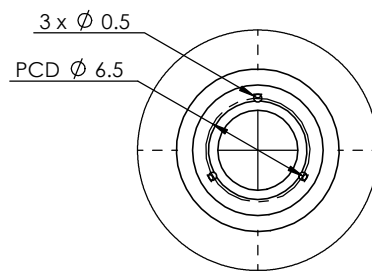
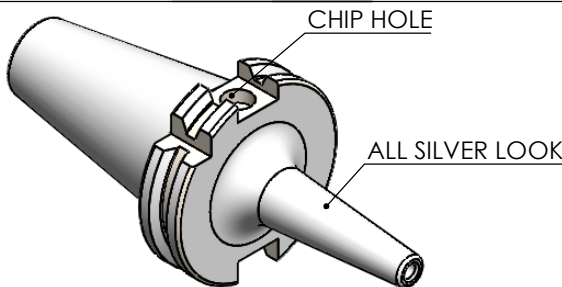


Rev.No.	Ch.Let	Alterations	Date	Sign.	Appd.

All Dimensions are in MM



LABEL :

2002266.0500
SCHRUMPFUTTER MIT KK
SHRINK FIT HOLDER COOLANT CHANNEL
ISO 7388-1 (DIN69871) SK40 AD/AF (AD+B)
SR4 05mm X 080mm
G2,5/25000 U/MIN

MARKING : ISO 7388-1 (DIN69871) SK40 AD/AF (AD+B) SFHC05H080
G2,5/25000 U/MIN

NOTE: WITHOUT BALANCING SCREW HOLES

ITEM NO.	PART NUMBER	DESCRIPTION	QTY.
1	F1S409H-SFK05080	SK40SFK05080FWW	1
2	GS-M4X4	GRUB SCREW	2

NOTE :

BALANCING 2.5G@ 25000 RPM

Weight : 0.9 Kg

	μ m	0.012	0.025	0.05	0.1	0.2	0.4	0.8	1.6	3.2	6.3	12.5	25	50
GRADES		N1	N2	N3	N4	N5	N6	N7	N8	N9	N10	N11	N12	
SYMBOLS		▽▽▽	▽▽	▽	▽	▽	▽	▽	▽	▽	▽	▽	▽	~
TOLERANCE	MATERIALS:	2022	NAME	DATE	WEMAG 2002266.0500									
FREE DIMENSIONS	HDS	DRAWN	SVR	29/01										
TOLERANCE		CHECKED	RVL	29/01										
Dimns.		APPROVED												
0.5 to 3	± 0.05	± 0.10	SCALE : NTS QTY. :		PART NAME:									
3 to 6	± 0.10	± 0.15			SK40SFK05080FWW									
6 to 30	± 0.15	± 0.20			DRAWING No.									
30 to 120	± 0.20	± 0.25			F1S409H-SFK05080									
120 to 500	± 0.30	± 0.50			REV.									
					00									