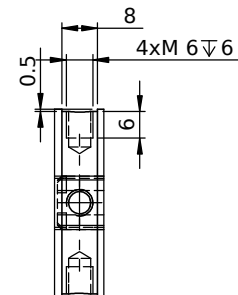
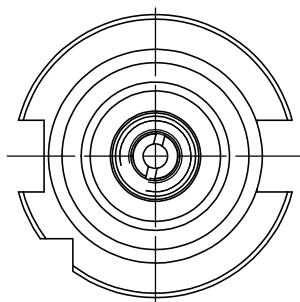
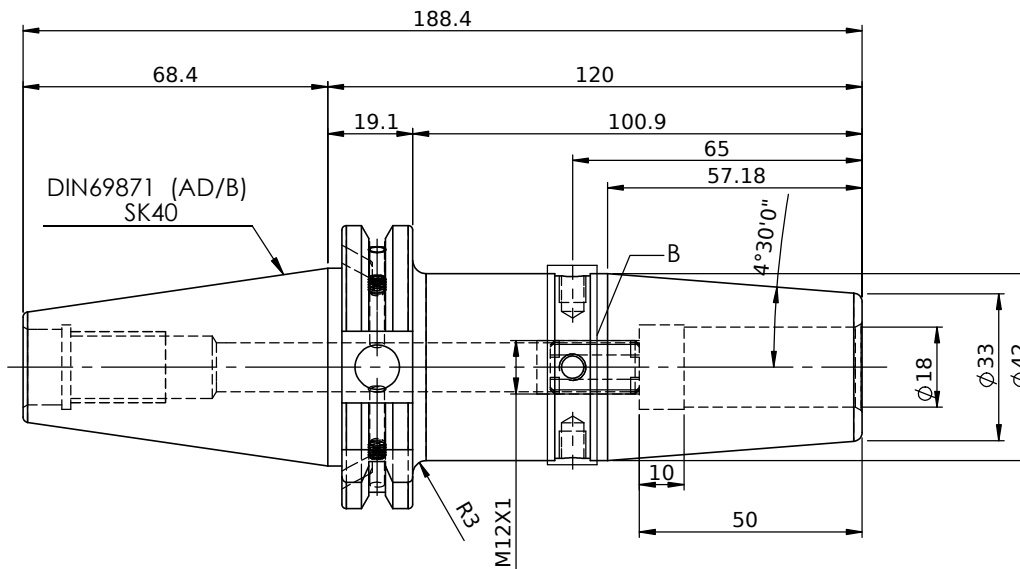


All Dimensions are in MM

Rev.No	Ch.Let	Alterations	Date	Sign.	Appd.



DETAIL B



LABEL :
2002265.1801
SCHRUMPFUTTER
SHRINK FIT HOLDER
ISO 7388-1 (DIN69871) SK40 AD/AF (AD+B)
SR2 18mm X 120mm
G2,5/25000 U/MIN

NOTE :
BALANCING 2.5G@ 25000 RPM

Weight : 1.6 Kg

MARKING : ISO 7388-1 (DIN69871) SK40 AD/AF (AD+B) SR18H120
G2,5/25000 U/MIN

µm	0.012	0.025	0.05	0.1	0.2	0.4	0.8	1.6	3.2	6.3	12.5	25	50
GRADES	N1	N2	N3	N4	N5	N6	N7	N8	N9	N10	N11	N12	
SYMBOLS	▽▽▽			▽▽			▽			▽			~
TOLERANCE	MATERIALS:			2023		NAME		DATE					
FREE DIMENSIONS	HDS			DRAWN		EJK		02/06					
TOLERANCE	CHECKED			RVL		APPROVED		02/06					
Dimns.	Dia	Length	SCALE : NTS			QTY. :							
0.5 to 3	±0.05	±0.10	PART NAME:			SK40SFC 18120FWW		DRAWING No.					
3 to 6	±0.10	±0.15	SK40SFC 18120FWW			DRAWING No.		F1S409H-SFC 18120					
6 to 30	±0.15	±0.20	PART NAME:			SK40SFC 18120FWW		REV.					
30 to 120	±0.20	±0.25	SK40SFC 18120FWW			DRAWING No.		F1S409H-SFC 18120					
120 to 500	±0.30	±0.50	SK40SFC 18120FWW			DRAWING No.		F1S409H-SFC 18120					

ITEM NO.	PART NUMBER	DESCRIPTION	QTY.
1	F1S409H-SFC18120	SK40SFC18120FWW	1
2	SCWM12	STOPPER SCREW	1
3	GS-M4X4	GRUB SCREW	2

WEMAG
2002265.1801

DRAWING No. F1S409H-SFC 18120 REV. 00