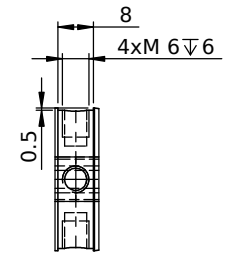
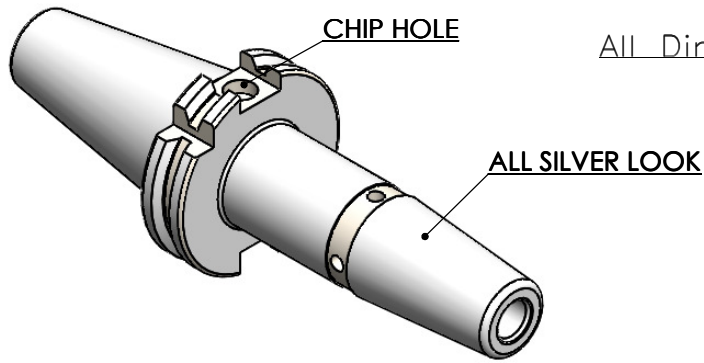
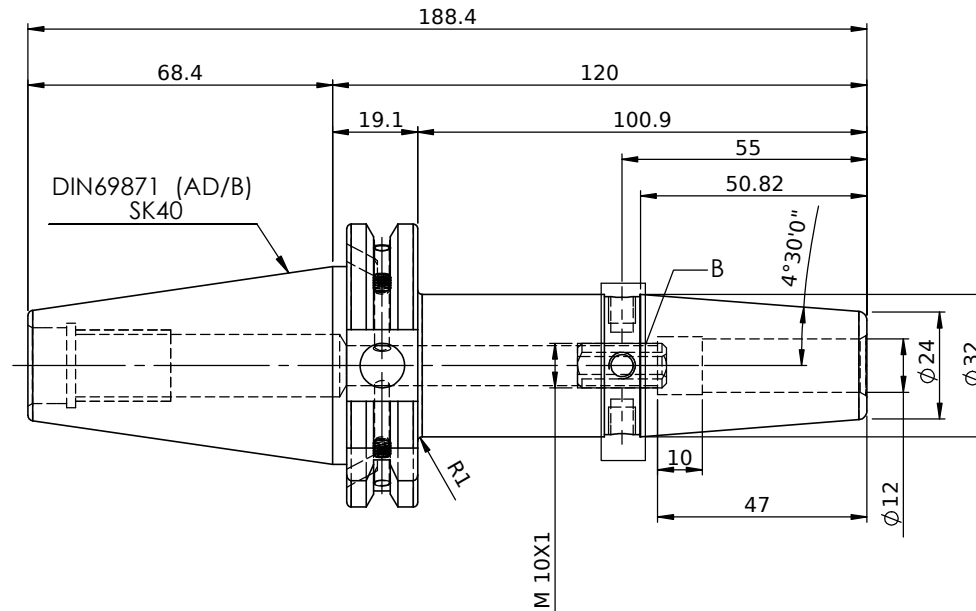
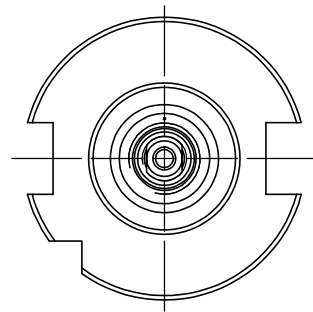


Rev.No	Ch.Let	Alterations	Date	Sign.	Appd.

All Dimensions are in MM



DETAIL B



NOTE :
BALANCING 2.5G@ 25000 RPM

Weight : 1.3 Kg

LABEL :
2002265.1201
SCHRUMPFUTTER
SHRINK FIT HOLDER
ISO 7388-1 (DIN69871) SK40 AD/AF (AD+B)
SR2 12mm X 120mm
G2,5/25000 U/MIN

MARKING : ISO 7388-1 (DIN69871) SK40 AD/AF (AD+B) SR12H120
G2,5/25000 U/MIN

	µm	0.012	0.025	0.05	0.1	0.2	0.4	0.8	1.6	3.2	6.3	12.5	25	50
GRADES		N1	N2	N3	N4	N5	N6	N7	N8	N9	N10	N11	N12	
SYMBOLS		▽▽▽	▽▽	▽	▽	▽	▽	▽	▽	▽	▽	▽	▽	~
TOLERANCE	MATERIALS:	2023		NAME		DATE								
FREE DIMENSIONS	HDS	DRAWN		EJK		25/03								
TOLERANCE		CHECKED		RVL		25/03								
		APPROVED												
		SCALE : NTS		QTY. :										
Dimns.	Dia	Length	PART NAME:		DRAWING No.		REV.							
0.5 to 3	±0.05	±0.10	SK 40SFC 12120FWW		F1S409H-SFC 12120		00							
3 to 6	±0.10	±0.15												
6 to 30	±0.15	±0.20												
30 to 120	±0.20	±0.25												
120 to 500	±0.30	±0.50												

ITEM NO.	PART NUMBER	DESCRIPTION	QTY.
1	F1S409H-SFC12120	SK40SFC12120FWW	1
2	SCWM10X1X20-FLAT	STOPPER SCREW	1
3	GS-M4X4	GRUB SCREW	2