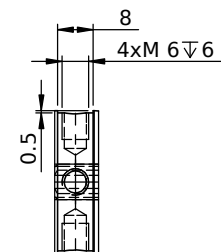


CHIP HOLE

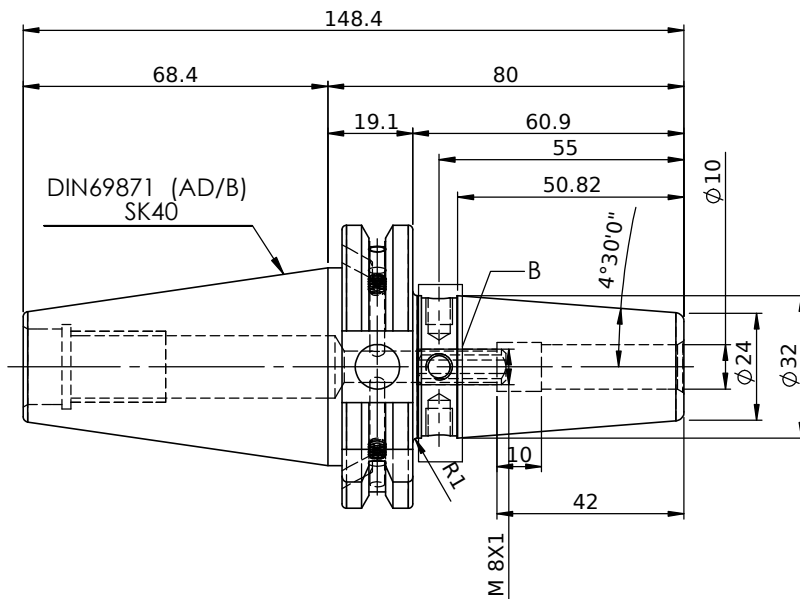
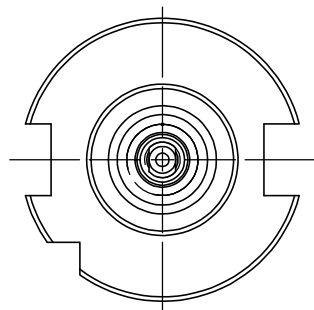
ALL SILVER LOOK

All Dimensions are in MM

Rev.No	Ch.Let	Alterations	Date	Sign.	Appd.



DETAIL B



NOTE :

BALANCING 2.5G@ 25000 RPM

Weight : 1.0 Kg

LABEL :
2002265.1000
SCHRUMPFUTTER
SHRINK FIT HOLDER
ISO 7388-1 (DIN69871) SK40 AD/AF (AD+B)
SR2 10mm X 080mm
G2,5/25000 U/MIN

MARKING : ISO 7388-1 (DIN69871) SK40 AD/AF (AD+B) SR08H080
G2,5/25000 U/MIN

µm	0.012	0.025	0.05	0.1	0.2	0.4	0.8	1.6	3.2	6.3	12.5	25	50	
GRADES	N1	N2	N3	N4	N5	N6	N7	N8	N9	N10	N11	N12		
SYMBOLS	▽▽▽			▽▽▽			▽▽			▽		~		
TOLERANCE	MATERIALS:			2023		NAME		DATE						
FREE DIMENSIONS	HDS			DRAWN		EJK		17/04						
TOLERANCE	CHECKED			RVL		APPROVED		17/04						
Dimns.	Dia	Length	SCALE : NTS			QTY. :			PART NAME:					
0.5 to 3	±0.05	±0.10	SK 40SFC 10080FWW			DRAWING No.			REV.					
3 to 6	±0.10	±0.15	SK 40SFC 10080FWW			F1S409H-SFC 10080			00					
6 to 30	±0.15	±0.20	SK 40SFC 10080FWW			F1S409H-SFC 10080			00					
30 to 120	±0.20	±0.25	SK 40SFC 10080FWW			F1S409H-SFC 10080			00					
120 to 500	±0.30	±0.50	SK 40SFC 10080FWW			F1S409H-SFC 10080			00					

ITEM NO.	PART NUMBER	DESCRIPTION	QTY.
1	F1S409H-SFC10080	SK40SFC10080FWW	1
2	SCWM8X1X20-FLAT	STOPPER SCREW	1
3	GS-M4X4	GRUB SCREW	2

WEMAG
2002265.1000