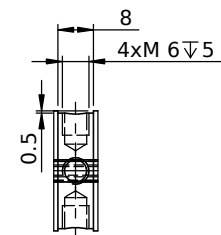
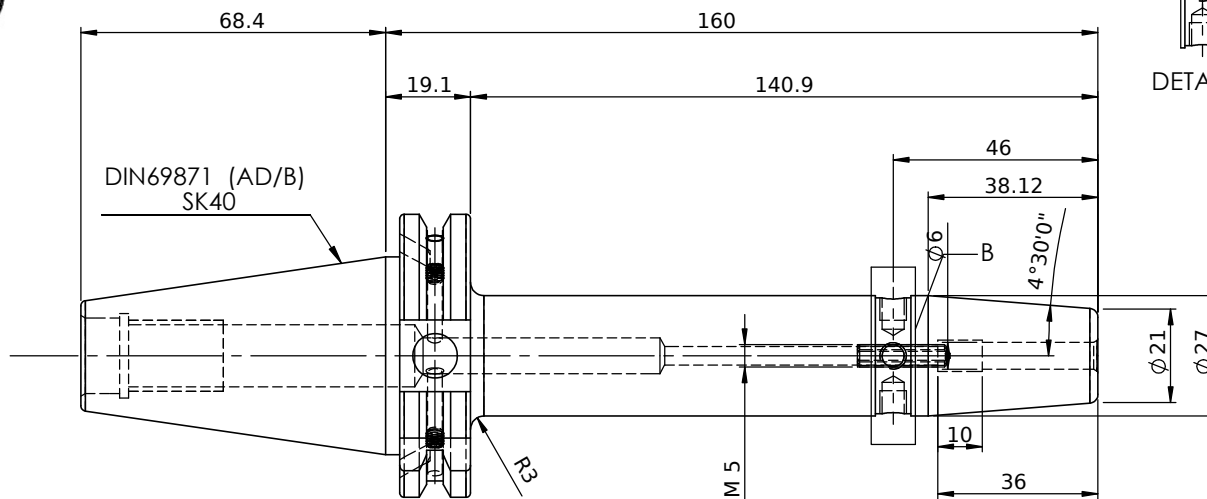
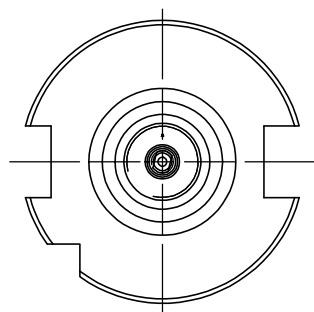


All Dimensions are in MM

Rev.No	Ch.Let	Alterations	Date	Sign.	Appd.



DETAIL B



LABEL :
2002265.0602
SCHRUMPFUTTER
SHRINK FIT HOLDER
ISO 7388-1 (DIN69871) SK40 AD/AF (AD+B)
SR2 06mm X 160mm
G2,5/25000 U/MIN

NOTE :
BALANCING 2.5G@ 25000 RPM

Weight : 1.3 Kg

MARKING : ISO 7388-1 (DIN69871) SK40 AD/AF (AD+B) SR06H160
G2,5/25000 U/MIN

	µ m	0.012	0.025	0.05	0.1	0.2	0.4	0.8	1.6	3.2	6.3	12.5	25	50		
GRADES		N1	N2	N3	N4	N5	N6	N7	N8	N9	N10	N11	N12			
SYMBOLS		▽▽▽	▽▽	▽	▽	▽	▽	▽	▽	▽	▽	▽	▽	~		
TOLERANCE	MATERIALS:	2023		NAME		DATE		WEMAG 2002265.0602								
FREE DIMENSIONS	HDS	DRAWN	SK	25/03												
TOLERANCE		CHECKED	RUL	25/03												
		APPROVED														
Dimns.	Dia	Length	SCALE : NTS		QTY. :		PART NAME:							DRAWING No.		REV.
0.5 to 3	±0.05	±0.10					SK40SFC06160FWW							F1S409H-SFC06160		00
3 to 6	±0.10	±0.15														
6 to 30	±0.15	±0.20														
30 to 120	±0.20	±0.25														
120 to 500	±0.30	±0.50														

ITEM NO.	PART NUMBER	DESCRIPTION	QTY.
1	F1S409H-SFC06160	SK40SFC06160FWW	1
2	SCWM5x0.8x20-FLAT	STOPPER SCREW	1
3	GS-M4X4	GRUB SCREW	2