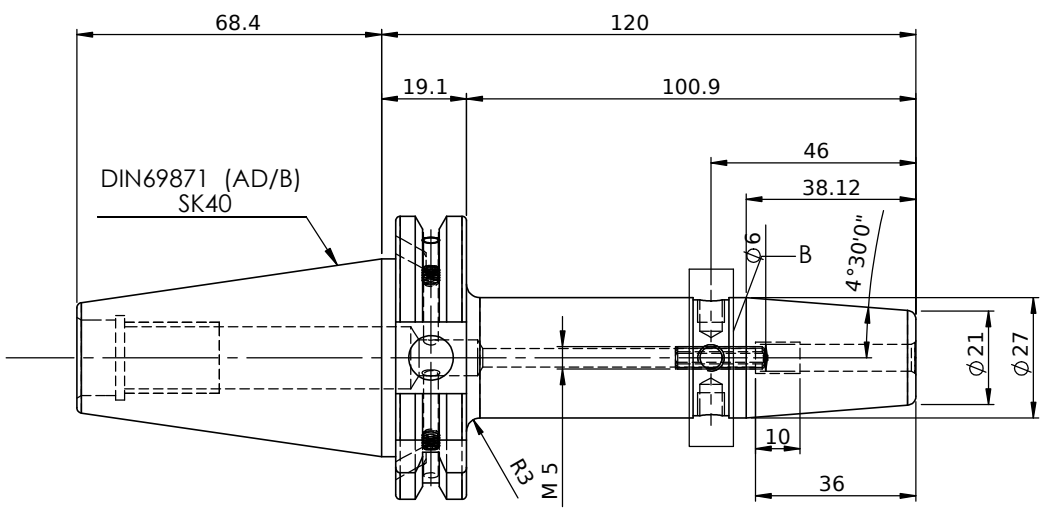
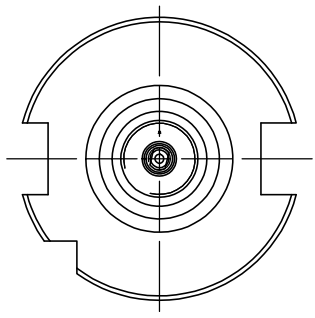
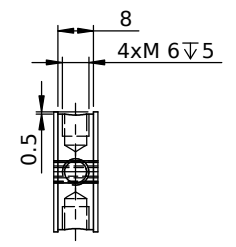
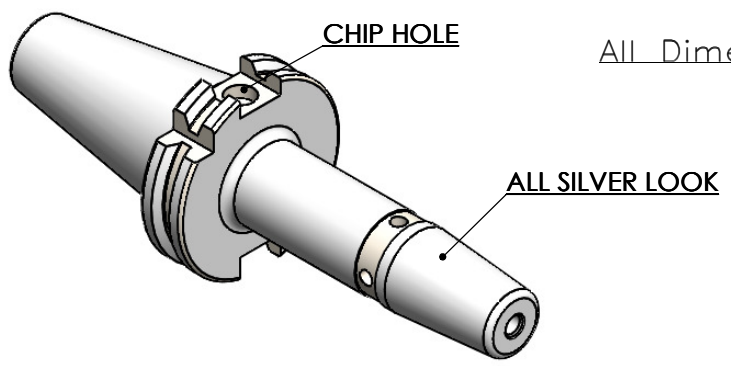


Rev.No	Ch.Let	Alterations	Date	Sign.	Appd.

All Dimensions are in MM



LABEL :
2002265.0601
SCHRUMPFUTTER
SHRINK FIT HOLDER
ISO 7388-1 (DIN69871) SK40 AD/AF (AD+B)
SR2 06mm X 120mm
G2,5/25000 U/MIN

NOTE :
BALANCING 2.5G@ 25000 RPM

Weight : 1.2 Kg

MARKING : ISO 7388-1 (DIN69871) SK40 AD/AF (AD+B) SR06H120
G2,5/25000 U/MIN

µm	0.012	0.025	0.05	0.1	0.2	0.4	0.8	1.6	3.2	6.3	12.5	25	50
GRADES	N1	N2	N3	N4	N5	N6	N7	N8	N9	N10	N11	N12	
SYMBOLS	▽▽▽			▽▽▽			▽▽			▽		~	
TOLERANCE	MATERIALS:			2023	NAME	DATE		WEMAG 2002265.0601					
FREE DIMENSIONS	HDS			DRAWN	EFK	25/03							
TOLERANCE				CHECKED	RUL	25/03							
				APPROVED									
Dimns.	Dia	Length	SCALE : NTS			QTY. :		PART NAME:					
0.5 to 3	±0.05	±0.10	SK 40SFC 06120FWW			DRAWING No.		REV.					
3 to 6	±0.10	±0.15	F1S409H-SFC06120			00							
6 to 30	±0.15	±0.20											
30 to 120	±0.20	±0.25											
120 to 500	±0.30	±0.50											

ITEM NO.	PART NUMBER	DESCRIPTION	QTY.
1	F1S409H-SFC06120	SK40SFC06120FWW	1
2	SCWM5x0.8x20-FLAT	STOPPER SCREW	1
3	GS-M4X4	GRUB SCREW	2