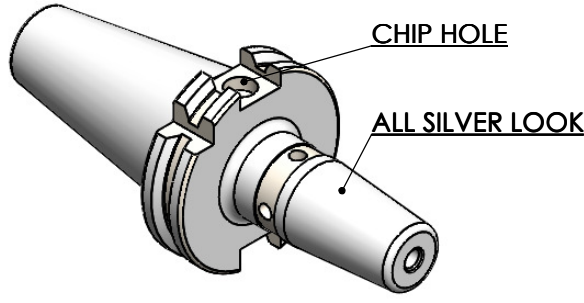
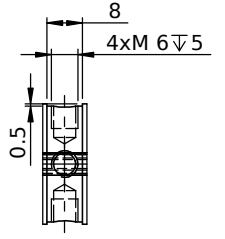


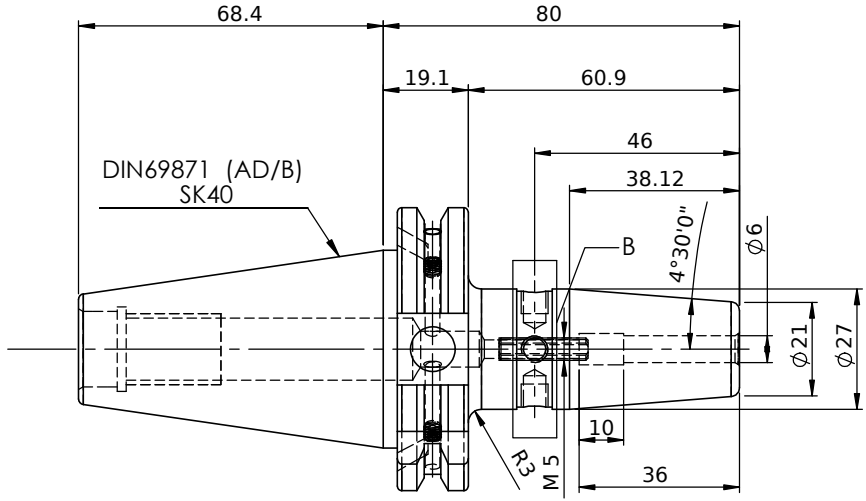
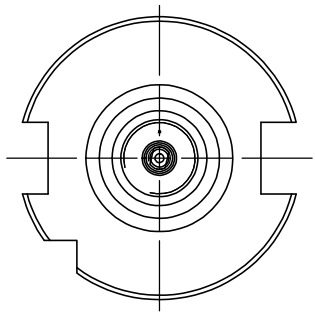
Rev.No	Ch.Let	Alterations	Date	Sign.	Appd.



All Dimensions are in MM



DETAIL B



LABEL :
2002265.0600
SCHRUMPFUTTER
SHRINK FIT HOLDER
ISO 7388-1 (DIN69871) SK40 AD/AF (AD+B)
SR2 06mm X 080mm
G2,5/25000 U/MIN

NOTE :
BALANCING 2.5G@ 25000 RPM

Weight : 1.0 Kg

MARKING : ISO 7388-1 (DIN69871) SK40 AD/AF (AD+B) SR06H080
G2,5/25000 U/MIN

µm	0.012	0.025	0.05	0.1	0.2	0.4	0.8	1.6	3.2	6.3	12.5	25	50
GRADES	N1	N2	N3	N4	N5	N6	N7	N8	N9	N10	N11	N12	
SYMBOLS	▽▽▽			▽▽▽			▽▽			▽			~
TOLERANCE		MATERIALS:		2023		NAME		DATE		WEMAG 2002265.0600			
FREE DIMENSIONS		HDS		DRAWN		RJK		17/04					
TOLERANCE				CHECKED		RVL		17/04					
				APPROVED									
				SCALE : NTS		QTY. :							
Dimns.		Dia		Length		PART NAME:		DRAWING No.		REV.			
0.5 to 3		±0.05		±0.10		SK 40SFC 06080FWW		F1S409H-SFC 06080		00			
3 to 6		±0.10		±0.15									
6 to 30		±0.15		±0.20									
30 to 120		±0.20		±0.25									
120 to 500		±0.30		±0.50									

ITEM NO.	PART NUMBER	DESCRIPTION	QTY.
1	F1S409H-SFC06080	SK40SFC06080FWW	1
2	SCWM5x0.8x20-FLAT	STOPPER SCREW	1
3	GS-M4X4	GRUB SCREW	2