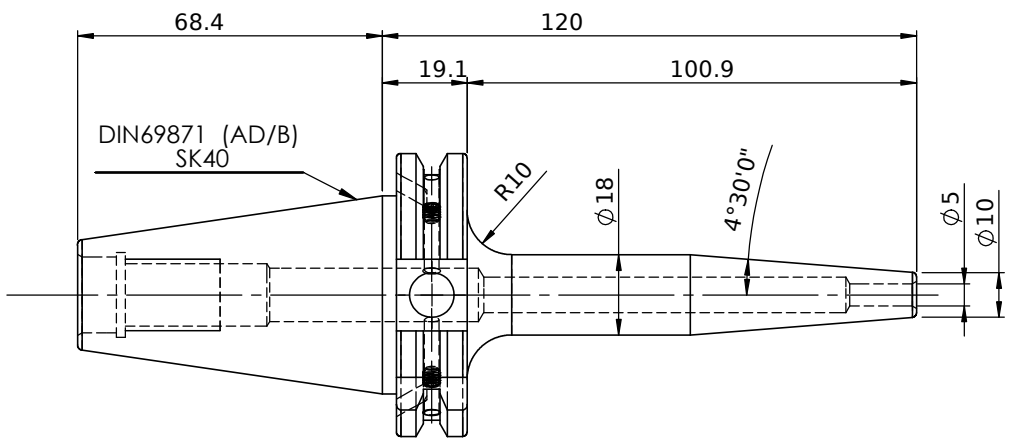
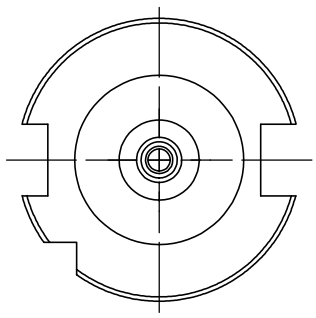
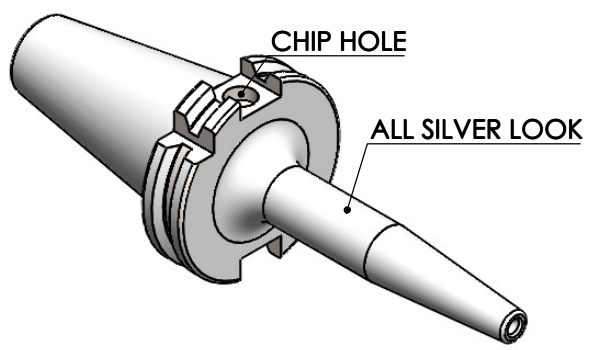


Rev.No.	Ch.Let	Alterations	Date	Sign.	Appd.

All Dimensions are in MM



LABEL :
2002265.0501
SCHRUMPFUTTER
SHRINK FIT HOLDER
ISO 7388-1 (DIN69871) SK40 AD/AF (AD+B)
SR2 05mm X 120mm
G2,5/25000 U/MIN

NOTE :
BALANCING 2.5G@ 25000 RPM

Weight : 0.9 Kg

MARKING : ISO 7388-1 (DIN69871) SK40 AD/AF (AD+B) SR05H120
G2,5/25000 U/MIN

NOTE: WITHOUT BALANCING SCREW HOLES

ITEM NO.	PART NUMBER	DESCRIPTION	QTY.
1	F1S409H-SFC05120	SK40SFC05120FWW	1
2	GS-M4X4	GRUB SCREW	2

µm	0.012	0.025	0.05	0.1	0.2	0.4	0.8	1.6	3.2	6.3	12.5	25	50
GRADES	N1	N2	N3	N4	N5	N6	N7	N8	N9	N10	N11	N12	
SYMBOLS	▽▽▽			▽▽▽			▽▽			▽			~
TOLERANCE	MATERIALS:		2023		NAME		DATE						
FREE DIMENSIONS	HDS		DRAWN		EJK		02/06						
TOLERANCE			CHECKED		RUL		02/06						
Dimns.	Dia	Length	SCALE : NTS		QTY. :								
0.5 to 3	±0.05	±0.10					WEMAG 2002265.0501						
3 to 6	±0.10	±0.15											
6 to 30	±0.15	±0.20											
30 to 120	±0.20	±0.25											
120 to 500	±0.30	±0.50					PART NAME: SK40SFC05120FWW DRAWING No. F1S409H-SFC05120 REV. 00						