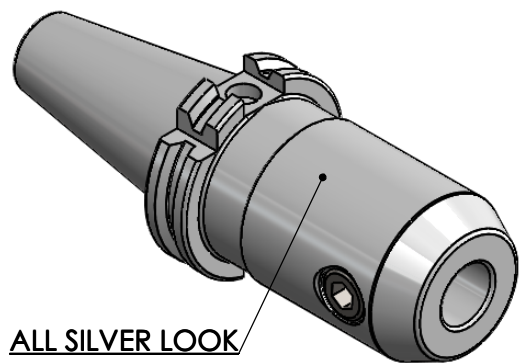
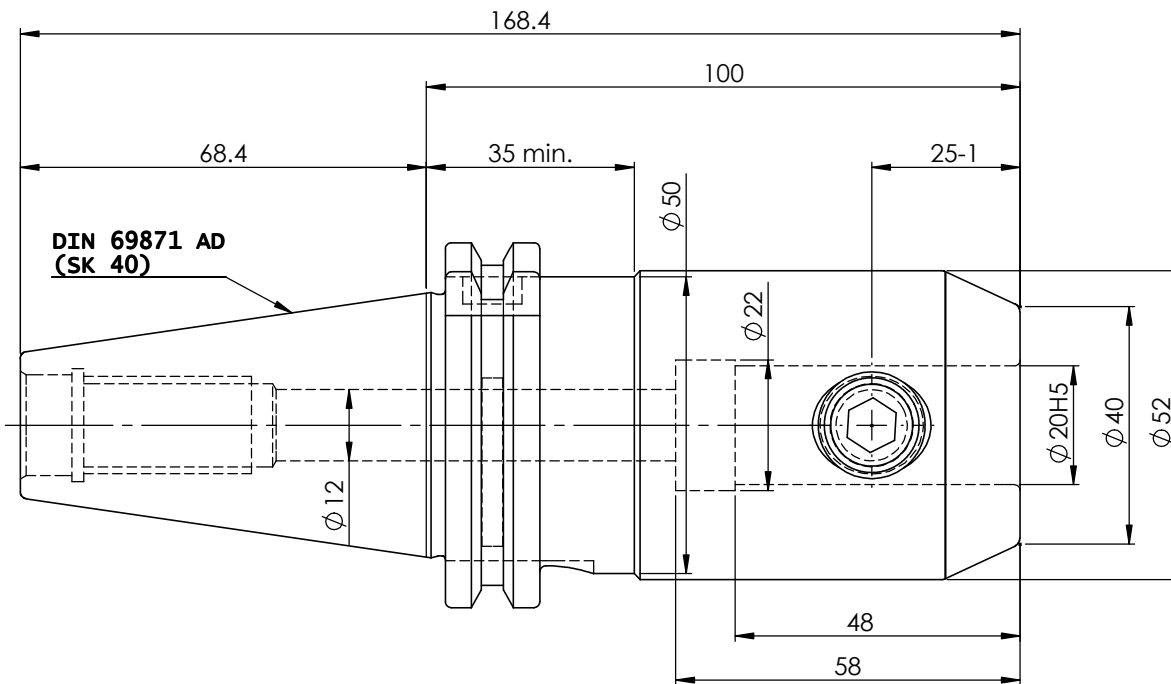
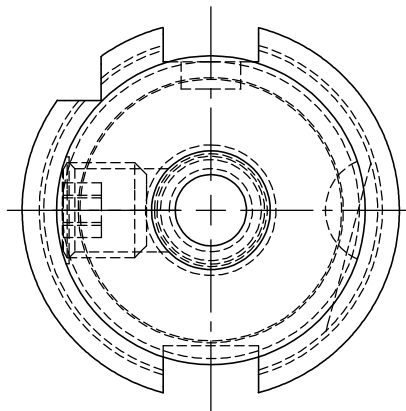


Rev.No.	Ch.Let	Alterations	Date	Sign.	Appd.

All Dimensions are in MM



ALL SILVER LOOK



Label :
2002263.2001
WELDON-AUFNAHME
WELDON HOLDER
DIN69871 AD SK40
WE 20 mm x 100 mm
G6.3 / 15000

MARKING : DIN 69871 AD SK40 WE20H100
G6.3 15000 U/MIN

NOTE :
BALANCING G6.3 AT 15000 RPM
WEIGHT : 1.86 kg

ITEM NO.	PART NUMBER	DESCRIPTION	QTY.
1	FWS401A-EMH20100	SK40EM20100WW	1
2	GS-M16x16-DIN1835-B	GRUB SCREW-(B.O)	1

μ m	0.012	0.025	0.05	0.1	0.2	0.4	0.8	1.6	3.2	6.3	12.5	25	50											
GRADES	N1		N2		N3		N4		N5		N6		N7		N8		N9		N10		N11		N12	
SYMBOLS	▽▽▽		▽▽▽		▽▽▽		▽▽▽		▽▽▽		▽▽▽		▽▽▽		▽▽▽		▽▽▽		▽▽▽		▽▽▽		▽▽▽	
TOLERANCE	FREE DIMENSIONS		TOLERANCE		MATERIALS:		2019	NAME	DATE	WEMAG 2002263.2001 DRAWING No. FWS401A-EMH20100														
Dimns.	Dia	Length	16MnCr5			DRAWN	PGK	31/08																
0.5 to 3	± 0.05	± 0.10				CHECKED	RVL	31/08																
3 to 6	± 0.10	± 0.15				APPROVED																		
6 to 30	± 0.15	± 0.20	PART NAME:			SCALE : NTS		QTY. :		DRAWING No. FWS401A-EMH20100														
30 to 120	± 0.20	± 0.25	SK40EM20100WW							REV. 00														
120 to 500	± 0.30	± 0.50																						