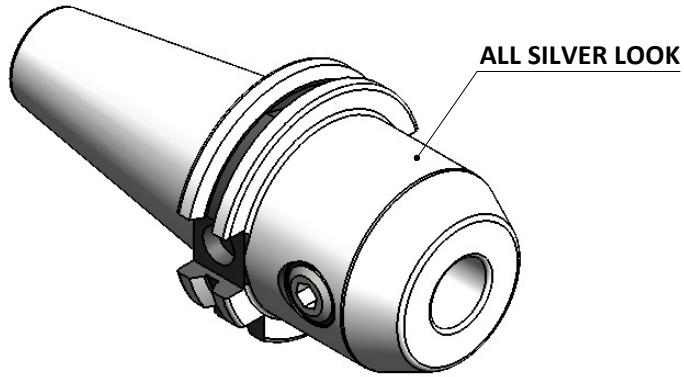


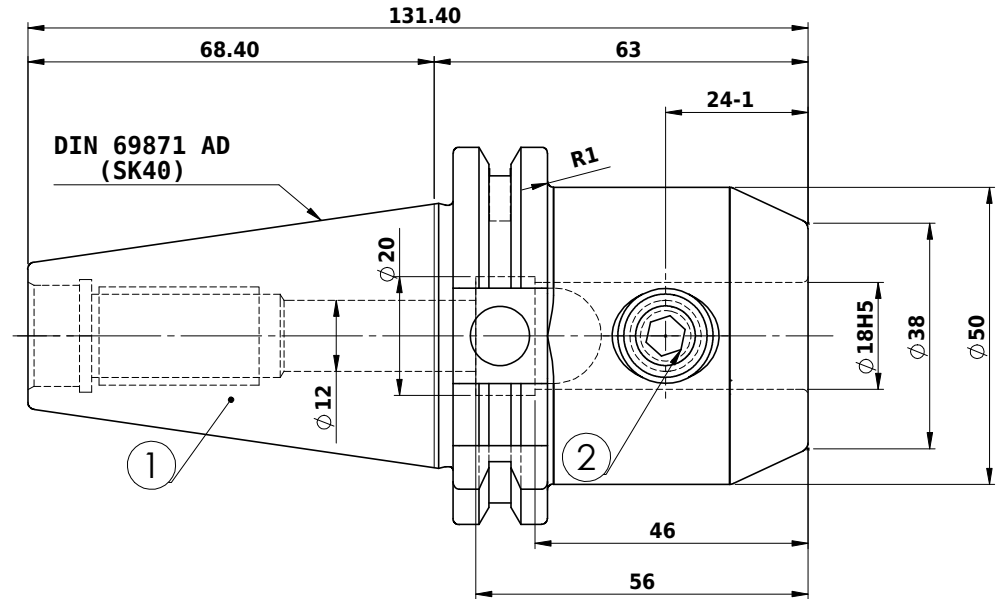
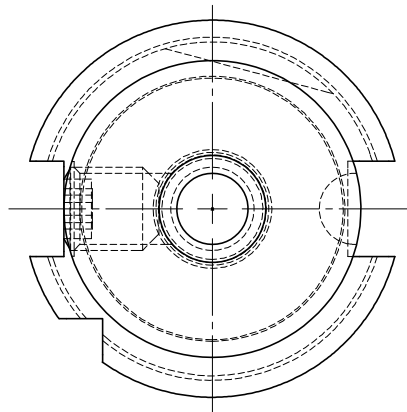
All Dimensions are in MM

Rev.No.	Ch.Let	Alterations	Date	Sign.	Appd.



CUSTOMER APPROVAL REQUIRED	
APPROVED BY	
DATE	

FOR QUOTATION PURPOSE ONLY



Label :

2002263.1800
WELDON-AUFNAHME
WELDON HOLDER
DIN69871 SK40 AD
WE 18 mm x 63 mm
G6.3 / 15000

NOTE :

BALANCING G6.3 AT 15000 RPM

WEIGHT : 1.5 kg

MARKING : DIN 69871 AD SK40 WE18H63
G6.3 15000 U/MIN

ITEM NO.	PART NUMBER	DESCRIPTION	QTY.
1	FWS409A-EMH18063	SK40 EM18 063 WW	1
2	GS-M14X16-DIN1835-B	GRUB SCREW-(B.O)	1

		μ m	0.012	0.025	0.05	0.1	0.2	0.4	0.8	1.6	3.2	6.3	12.5	25	50
		GRADES	N1	N2	N3	N4	N5	N6	N7	N8	N9	N10	N11	N12	
		SYMBOLS	▽▽▽	▽▽	▽										
		TOLERANCE	MATERIALS:		2016	NAME	DATE	WEMAG 2002263.1800							
		FREE DIMENSIONS	16MnCr5		DRAWN	SVK	26/11								
		TOLERANCE			CHECKED	RVL	26/11								
					APPROVED										
		Dimns.	Dia	Length	SCALE : NTS		QTY. :	PART NAME:		DRAWING No.		REV.			
		0.5 to 3	± 0.05	± 0.10	END MILL HOLDER		FWS409A-EMH18063				00				
		3 to 6	± 0.10	± 0.15											
		6 to 30	± 0.15	± 0.20											
		30 to 120	± 0.20	± 0.25											
		120 to 500	± 0.30	± 0.50											