

**All Dimensions are in MM**

Rev.No.	Ch.Let	Alterations	Date	Sign.	Appd.

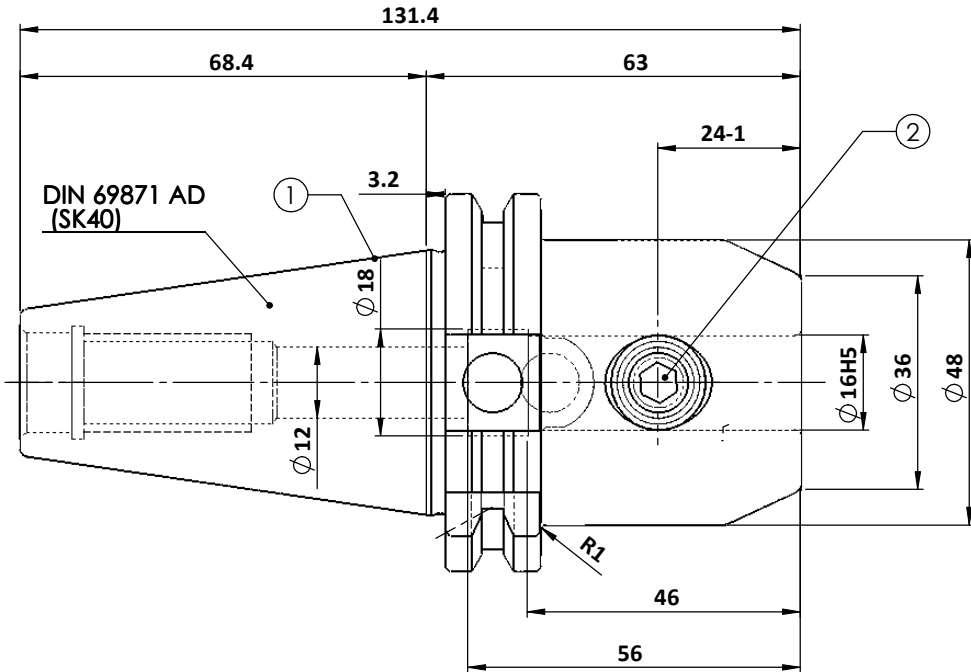
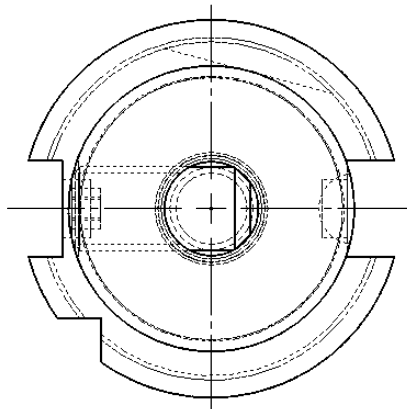
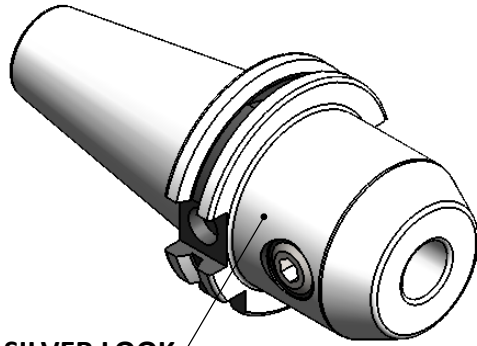
**CUSTOMER APPROVAL REQUIRED**

APPROVED BY

DATE

FOR QUOTATION PURPOSE ONLY

**ALL SILVER LOOK**



Label:  
2002263.1600  
WELDON-AUFNAHME  
WELDON HOLDER  
DIN69871 SK40 AD  
WE 16 mm x 63 mm  
G6.3 / 15000

NOTE :  
BALANCING G6.3 AT 15000 RPM  
WEIGHT : 1.5 kg

MARKING : DIN 69871 AD SK40  
WE16H63 G6.3 15000 U/MIN

ITEM NO.	PART NUMBER	DESCRIPTION	QTY.
1	FWS401A-EMH16063	SK40 EM16 063 WW	1
2	GS-M14X16-DIN1835-B	GRUB SCREW-(B.O)	1

	μ m	0.012	0.025	0.05	0.1	0.2	0.4	0.8	1.6	3.2	6.3	12.5	25	50		
GRADES		N1	N2	N3	N4	N5	N6	N7	N8	N9	N10	N11	N12			
SYMBOLS		▽▽▽	▽▽	▽	▽	▽	▽	▽	▽	▽	▽	▽	▽	~		
TOLERANCE FREE DIMENSIONS		2016		NAME		DATE		<b>WEMAG</b> <b>2002263.1600</b> DRAWING No. <b>FWS401A-EMH16063</b>								
TOLERANCE		16MnCr5		DRAWN		SVK									26/11	
Dimns.	Dia	Length		CHECKED		RVL									26/11	
0.5 to 3	± 0.05	± 0.10		APPROVED		-										
3 to 6	± 0.10	± 0.15		SCALE : NTS		QTY. :										
6 to 30	± 0.15	± 0.20		PART NAME:				DRAWING No.				REV.				
30 to 120	± 0.20	± 0.25		END MILL HOLDER				FWS401A-EMH16063				00				
120 to 500	± 0.30	± 0.50														