

**All Dimensions are in MM**

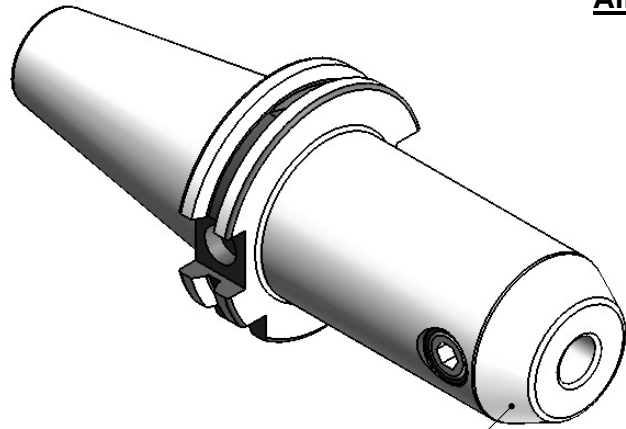
5	6	7	8
Rev.No.	Ch.Let	Alterations	Date

CUSTOMER APPROVAL REQUIRED

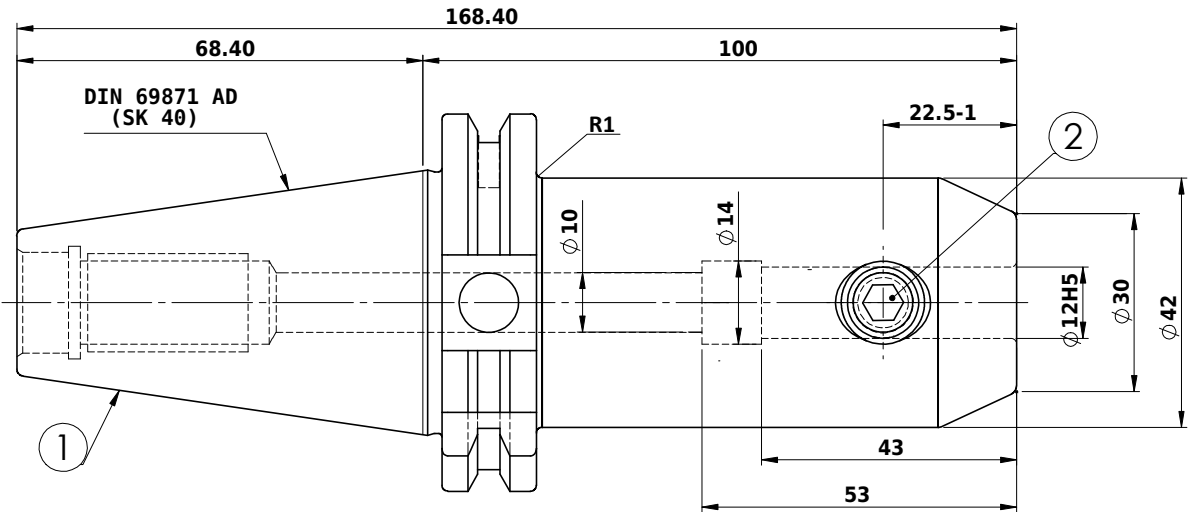
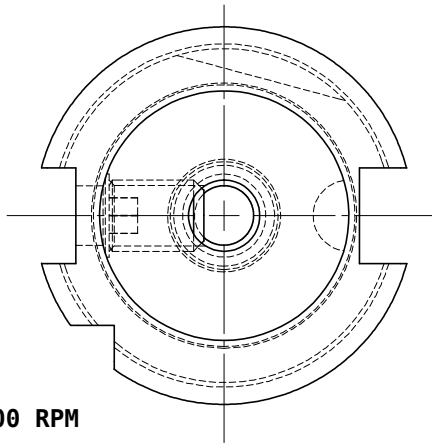
APPROVED BY

DATE

FOR QUOTATION PURPOSE ONLY



ALL SILVER LOOK



Label :  
2002263.1201  
WELDON-AUFNAHME  
WELDON HOLDER  
DIN69871 SK40 AD  
WE 12 mm x 100 mm  
G6.3 / 15000

NOTE :  
BALANCING G6.3 AT 15000 RPM  
WEIGHT : 1.5 kg

MARKING : DIN 69871 AD SK40 WE12H100  
G6.3 15000 U/MIN

ITEM NO.	PART NUMBER	DESCRIPTION	QTY.
1	GS-M12X16-DIN1835-B	GRUB SCREW-(B.O)	1
3	FWS401A-EMH12100	SK40 EM12 100WW	1

	μ m	0.012	0.025	0.05	0.1	0.2	0.4	0.8	1.6	3.2	6.3	12.5	25	50
GRADES		N1	N2	N3	N4	N5	N6	N7	N8	N9	N10	N11	N12	
SYMBOLS		▽▽▽	▽▽	▽	▽	▽	▽	▽	▽	▽	▽	▽	▽	~
TOLERANCE FREE DIMENSIONS TOLERANCE		2016		NAME		DATE								
Dimns.	Dia	Length	16MnCr5		DRAWN	SVK	26/11							
0.5 to 3	± 0.05	± 0.10			CHECKED	RVL	26/11							
3 to 6	± 0.10	± 0.15			APPROVED									
6 to 30	± 0.15	± 0.20			SCALE :	NTS	QTY. :							
30 to 120	± 0.20	± 0.25			PART NAME:			DRAWING No.						
120 to 500	± 0.30	± 0.50			END MILL HOLDER			FWS401A-EMH12100						

**WEMAG**  
**2002263.1201**

REV.  
00