

All Dimensions are in MM

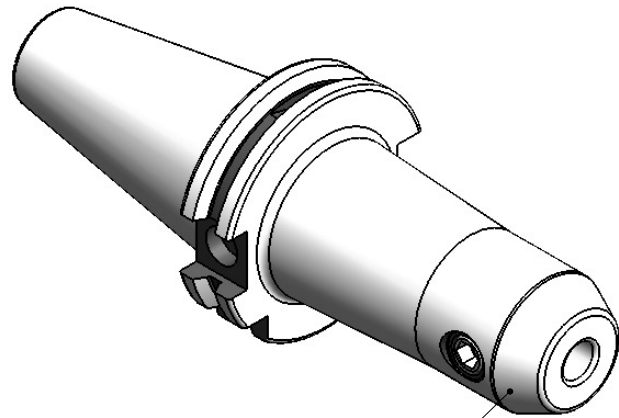
Rev.No.	Ch.Let	Alterations	Date	Sign.	Appd.

CUSTOMER APPROVAL REQUIRED

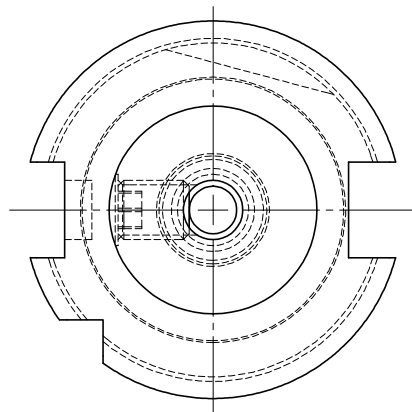
APPROVED BY

DATE

FOR QUOTATION PURPOSE ONLY



ALL SILVER LOOK



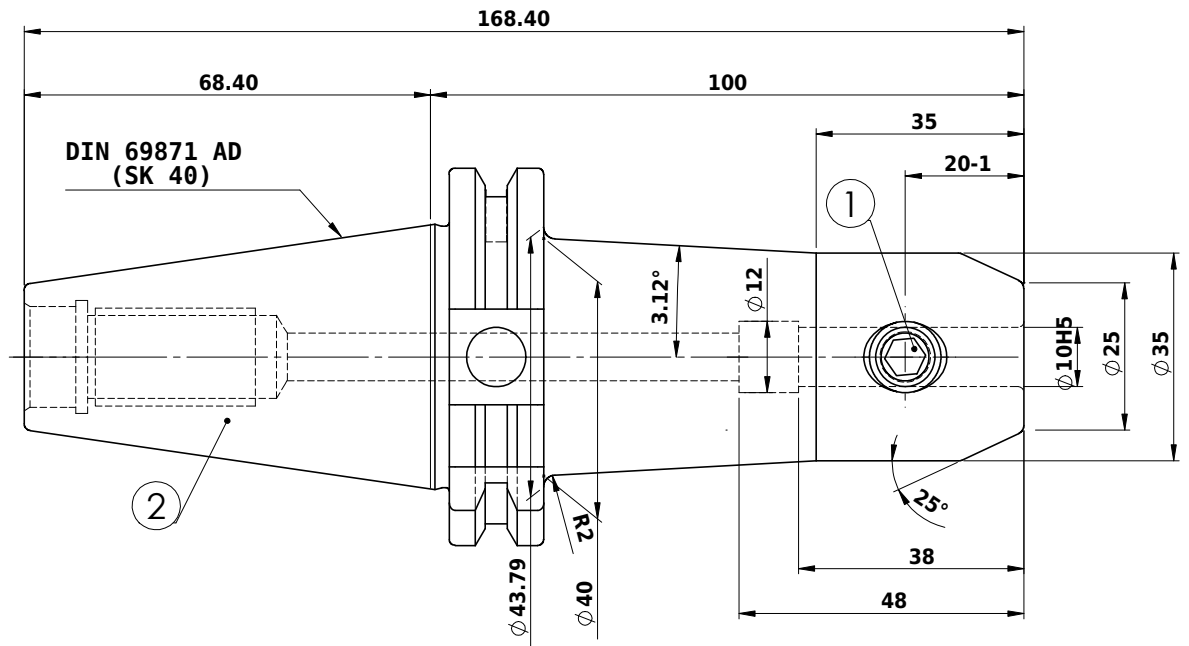
Label :
 2002263.1001
 WELDON-AUFNAHME
 WELDON HOLDER
 DIN69871 SK40 AD
 WE 10 mm x 100 mm
 G6.3 / 15000

NOTE :

BALANCING G6.3 AT 15000 RPM

WEIGHT : 1.38kg

**MARKING : DIN 69871 AD SK40 WE10H100
 G6.3 15000 U/MIN**



ITEM NO.	PART NUMBER	DESCRIPTION	QTY.
1	GS-M10X12-DIN1835-B	GRUB SCREW-(B.O)	1
2	FWS401A-EMH10100	SK40 EM10 100 WW	1

μ m	0.012	0.025	0.05	0.1	0.2	0.4	0.8	1.6	3.2	6.3	12.5	25	50
GRADES	N1	N2	N3	N4	N5	N6	N7	N8	N9	N10	N11	N12	
SYMBOLS	▽▽▽▽▽▽▽▽▽▽▽▽												
TOLERANCE FREE DIMENSIONS TOLERANCE	MATERIALS: 16MnCr5			2016	NAME	DATE	WEMAG 2002263.1001						
Dimns.	Dia	Length	DRAWN	SVK	26/11								
0.5 to 3	± 0.05	± 0.10	CHECKED	RVL	26/11								
3 to 6	± 0.10	± 0.15	APPROVED										
6 to 30	± 0.15	± 0.20	PART NAME: END MILL HOLDER			DRAWING No. FWS401A-EMH10100			REV. 00				
30 to 120	± 0.20	± 0.25	SCALE: NTS QTY.:										
120 to 500	± 0.30	± 0.50											