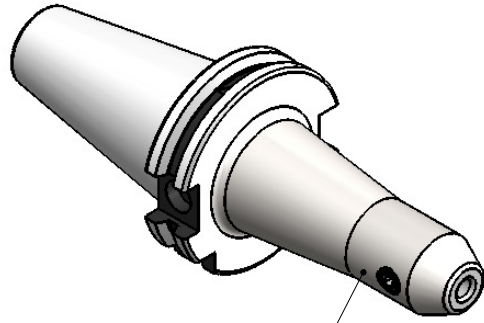


**All Dimensions are in MM**

Rev.No.	Ch.Let	Alterations	Date	Sign.	Appd.



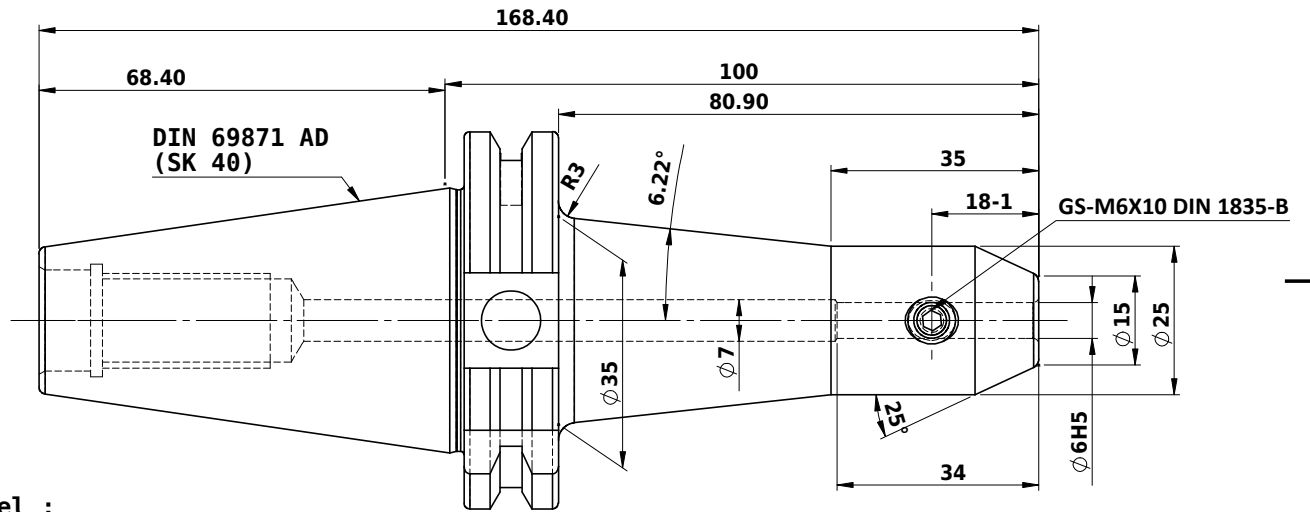
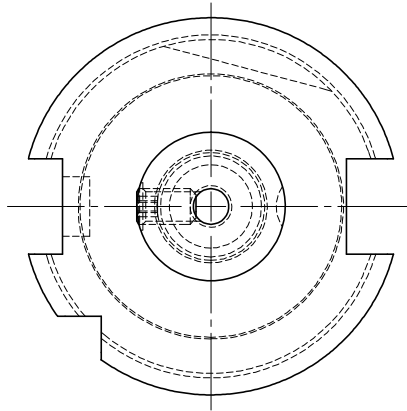
**ALL SILVER LOOK**

**CUSTOMER APPROVAL REQUIRED**

APPROVED BY

DATE

FOR QUOTATION PURPOSE ONLY



**Label :**

2002263.0601  
**WELDON -AUFNAHME  
 WELDON HOLDER  
 DIN69871 SK40 AD  
 WE 06 mm x 100 mm  
 G6.3 / 15000**

**NOTE :**

**BALANCING G6.3 AT 15000 RPM**

**WEIGHT : 1.3 kg**

**MARKING : DIN 69871 AD SK40 WE06H100  
 G6.3 15000 U/MIN**

ITEM NO.	PART NUMBER	DESCRIPTION	QTY.
1	GS M6x10 DIN 1835-B	GRUB SCREW - (B.O.)	1
2	FWS401A-EMH06100	SK40EM06100WW	1

	μ m	0.012	0.025	0.05	0.1	0.2	0.4	0.8	1.6	3.2	6.3	12.5	25	50
GRADES		N1	N2	N3	N4	N5	N6	N7	N8	N9	N10	N11	N12	
SYMBOLS		▽	▽	▽	▽	▽	▽	▽	▽	▽	▽	▽	▽	~
TOLERANCE FREE DIMENSIONS TOLERANCE		2017		NAME		DATE		<b>WEMAG</b> <b>2002263.0601</b>						
Dimns.	Dia	Length	MATERIALS:	DRAWN	ELA	03/05								
0.5 to 3	± 0.05	± 0.10	16MnCr5	CHECKED	RVL	03/05								
3 to 6	± 0.10	± 0.15		APPROVED										
6 to 30	± 0.15	± 0.20		SCALE :	NTS	QTY. :	PART NAME:		DRAWING No.					
30 to 120	± 0.20	± 0.25		SK40EM06100WW			FWS401A-EMH06100							
120 to 500	± 0.30	± 0.50		REV.			00							