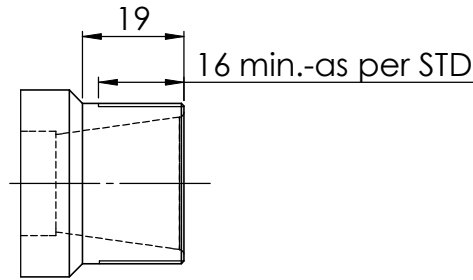
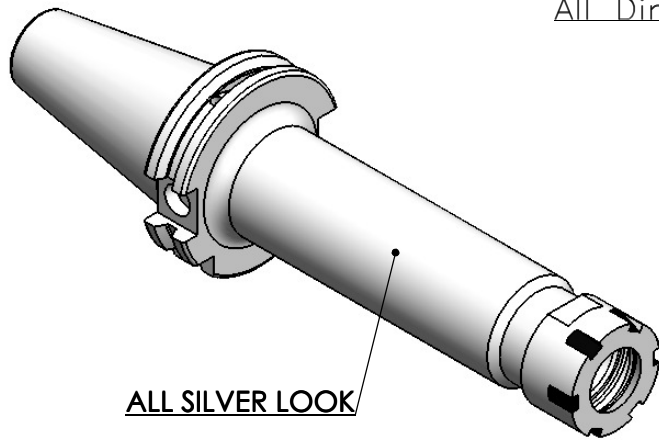


All Dimensions are in MM

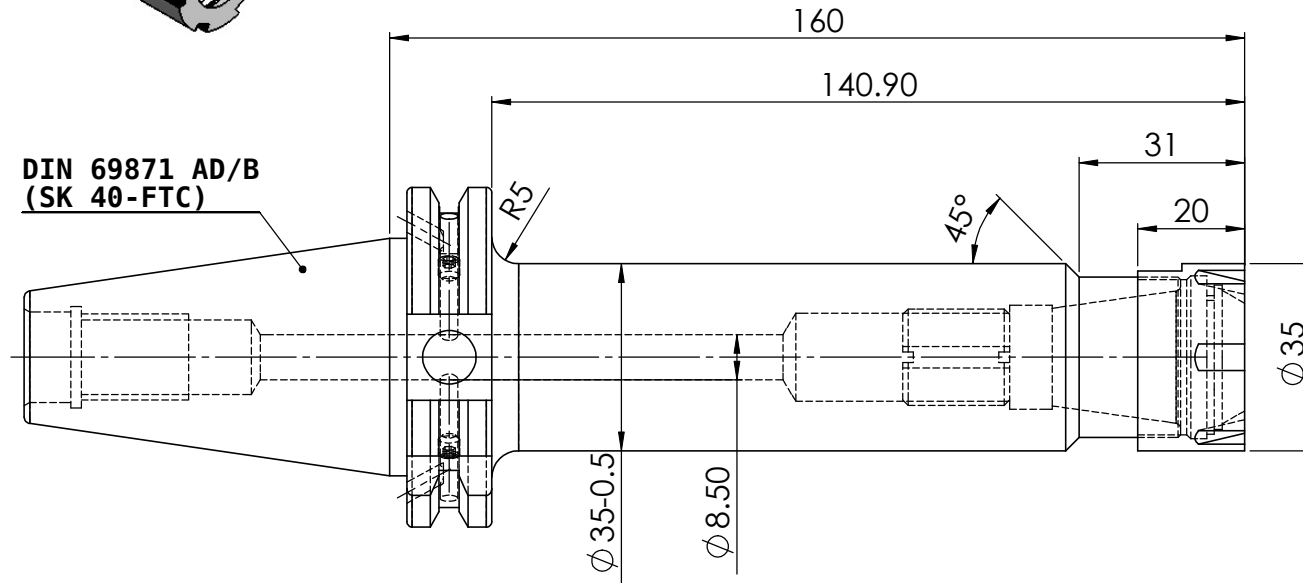
Rev.No.	Ch.Let	Alterations	Date	Sign.	Appd.

<b>CUSTOMER APPROVAL REQUIRED</b>	
APPROVED BY	
DATE	

FOR QUOTATION PURPOSE ONLY



DIN 69871 AD/B  
(SK 40-FTC)



MARKING : DIN 69871 AD/B SK40 CCH ERM25 H160  
G2.5 25000 U/MIN

LABEL :2002262.0502  
Spannzangenaufnahme  
ER collet chuck  
DIN69871 SK40 AD/B  
ER25Mx 100 mm  
G2,5 / 25000 U/MIN

NOTE :

BALANCING 2.5G AT 25000 RPM

WEIGHT : 1.6 kgs.

ITEM NO.	PART NUMBER	DESCRIPTION	QTY.
1	FTNUTER25M	COLLET NUT(B.O)	1
2	GS-M4X4	GRUB SCREW-(B.O.)	2
3	SK40 CCH ER 25 160M F WW	COLLET CHUCK HOLDER	1
4	FTSCWM18X1.5	STOPPER SCREW	1

µ m	0.012	0.025	0.05	0.1	0.2	0.4	0.8	1.6	3.2	6.3	12.5	25	50
GRADES	N1	N2	N3	N4	N5	N6	N7	N8	N9	N10	N11	N12	
SYMBOLS	▽▽▽			▽▽▽			▽▽			▽			~
TOLERANCE	MATERIALS:			2015		NAME		DATE					
FREE DIMENSIONS	16MnCr5			DRAWN		ELA		29/09					
TOLERANCE	TOLERANCE			CHECKED		RVL		29/09					
Dimns.	Dia	Length	APPROVED		SCALE : NTS		QTY. :						
0.5 to 3	± 0.05	± 0.10	PART NAME:		DRAWING No.						REV.		
3 to 6	± 0.10	± 0.15	COLLET CHUCK HOLDER		SK40 CCH ER 25 160M F WW						00		
6 to 30	± 0.15	± 0.20											
30 to 120	± 0.20	± 0.25											
120 to 500	± 0.30	± 0.50											