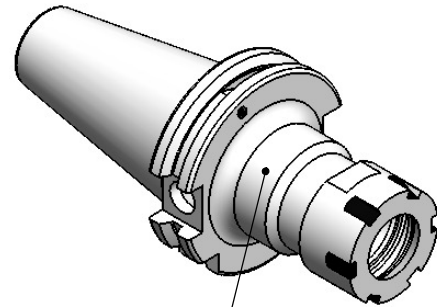
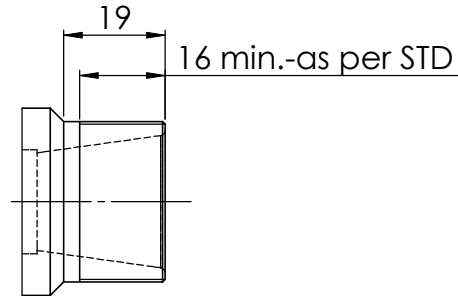


All Dimensions are in MM

Rev.No.	Ch.Let	Alterations	Date	Sign.	Appd.



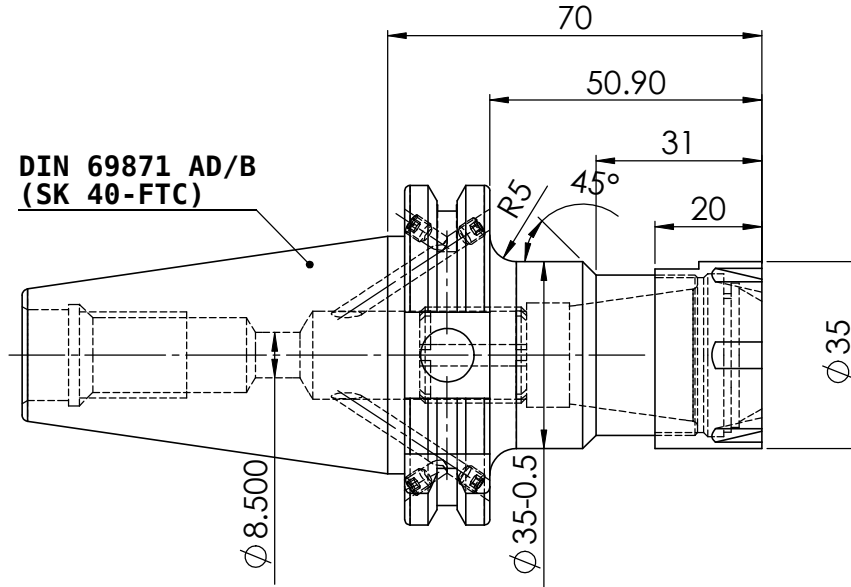
ALL SILVER LOOK



CUSTOMER APPROVAL REQUIRED	
APPROVED BY	
DATE	

FOR QUOTATION PURPOSE ONLY

DIN 69871 AD/B
(SK 40-FTC)



MARKING : DIN 69871 AD/B SK40 CCH ERM25 H070
G2.5 25000 U/MIN

LABEL :2002262.0500
Spannzangenaufnahme
ER collet chuck
DIN69871 SK40 AD/B
ER25Mx 070 mm
G2,5/ 25000 U/MIN

NOTE :

BALANCING 2.5G AT 25000 RPM

WEIGHT : 0.9 kgs.

µ m	0.012	0.025	0.05	0.1	0.2	0.4	0.8	1.6	3.2	6.3	12.5	25	50
GRADES	N1	N2	N3	N4	N5	N6	N7	N8	N9	N10	N11	N12	
SYMBOLS	▽▽▽	▽▽	▽	▽	▽	▽	▽	▽	▽	▽	▽	▽	~
TOLERANCE	MATERIALS:			NAME		DATE		WEMAG 2002262.0500					
FREE DIMENSIONS	16MnCr5			DRAWN		29/09							
TOLERANCE				CHECKED		RVL							
				APPROVED									
Dimns.	Dia	Length	PART NAME:		SCALE : NTS		QTY. :		DRAWING No.				REV.
0.5 to 3	± 0.05	± 0.10	COLLET CHUCK HOLDER						SK40 CCHER25 070M FTC WW				00
3 to 6	± 0.10	± 0.15											
6 to 30	± 0.15	± 0.20											
30 to 120	± 0.20	± 0.25											
120 to 500	± 0.30	± 0.50											

ITEM NO.	PART NUMBER	DESCRIPTION	QTY.
1	FTNUTER25M	COLLET NUT(B.O)	1
2	SK40 CCH ER 25 070M F WW	COLLET CHUCK HOLDER	1
3	GS-M4X4	GRUB SCREW-(B.O.)	4
4	FTSCWM18X1.5	STOPPER SCREW	1