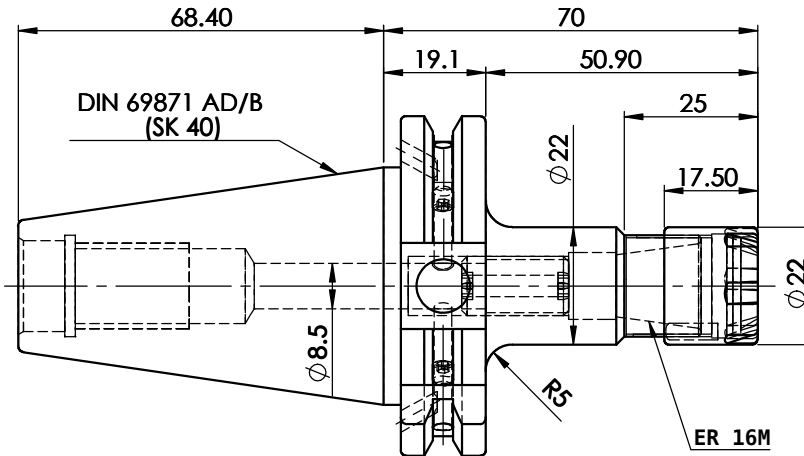
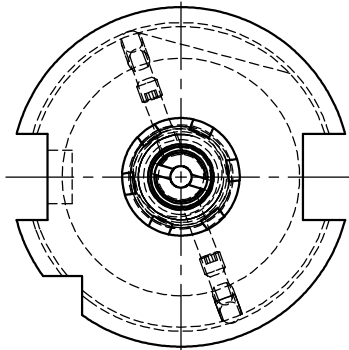
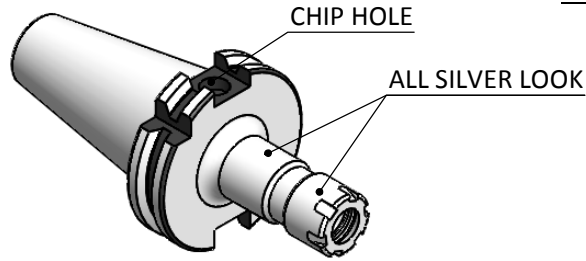


All Dimensions are in MM



LABEL :

2002262.0300
Spannzangenaufnahme
ER Collet chuck holder
ISO 7388-1 (DIN 69871) SK40 AD/AF (AD+B)
ER16M X 70 mm
G 2,5 25000 U/MIN

MARKING : ISO 7388-1 (DIN 69871) SK40 AD/AF (AD+B) CCH ER16M H070
G2.5 25000 U/MIN

ITEM NO.	PART NUMBER	DESCRIPTION	QTY.
1	FWS409H-ERM16070	SK40CCHER16070MFWW	1
2	NUTER16M	COLLET NUT (B.O.)	1
3	SCW7/16-20UNF	STOPPER SCREW	1
4	GS-M4X4	GRUB SCREW-(B.O.)	2

Rev.No.	Ch.Let	Alterations	Date	Sign.	Appd.

NOTE:

WEIGHT : 0.9 Kg

BALANCING 2.5G @ 25000 RPM

	μ m	0.012	0.025	0.05	0.1	0.2	0.4	0.8	1.6	3.2	6.3	12.5	25	50
GRADES		N1	N2	N3	N4	N5	N6	N7	N8	N9	N10	N11	N12	
SYMBOLS		▽▽▽			▽▽▽			▽▽			▽		~	
TOLERANCE	MATERIALS:	2014	NAME	DATE	WEMAG 2002262.0300									
FREE DIMENSIONS	16MnCr5	DRAWN	Bala	26/07										
TOLERANCE		CHECKED	RVL	26/07										
		APPROVED												
Dimns.	Dia	Length	SCALE: NTS		QTY.:		PART NAME:		DRAWING No.		REV.			
0.5 to 3	± 0.05	± 0.10					SK40CCHER16070MFWW		FWS409H-ERM16070		01			
3 to 6	± 0.10	± 0.15												
6 to 30	± 0.15	± 0.20												
30 to 120	± 0.20	± 0.25												
120 to 500	± 0.30	± 0.50												