

All Dimensions are in MM

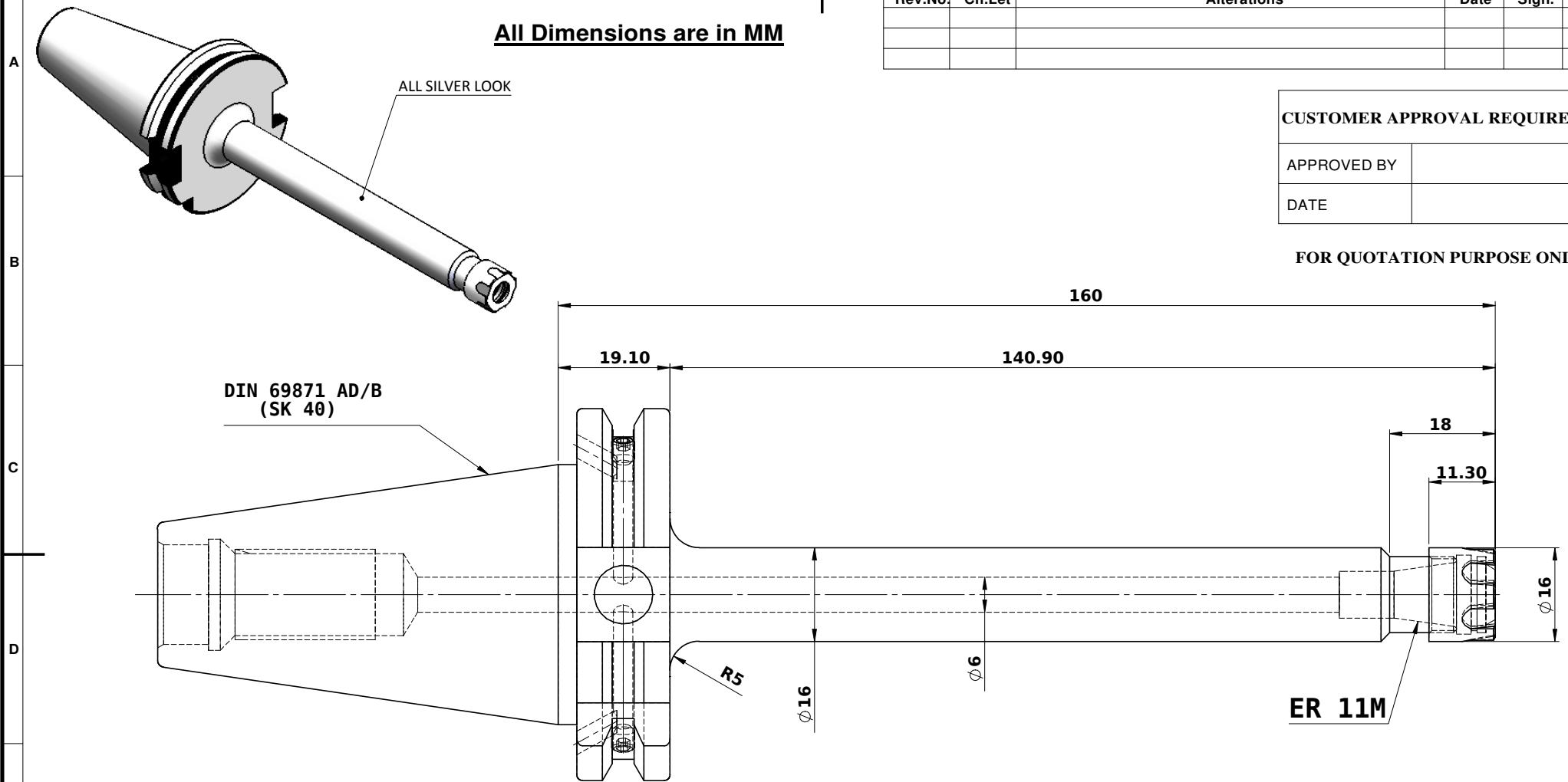
Rev.No.	Ch.Let	Alterations	Date	Sign.	Appd.

CUSTOMER APPROVAL REQUIRED

APPROVED BY

DATE

FOR QUOTATION PURPOSE ONLY



LABEL :
 2002262.0202
 spannzangenaufnahme
 ER Collet chuck holder
 DIN 69871 SK40 AD/B
 ER11M X 160 mm
 G 2,5 25000 U/MIN

MARKING :
 DIN 69871 AD/B SK40 CCH ER11M H160
 G2.5 25000 U/MIN

WEIGHT :1.0 Kg.

BALANCING 2.5G @ 25000 RPM

ITEM NO.	PART NUMBER	DESCRIPTION	QTY.
1	SK40 CCH ER11 160M FTC WW	COLLET CHUCK HOLDER	1
2	FTNUTER11M	COLLET NUT	1
3	BO	GRUB SCREW M4X4	2

μ m	0.012	0.025	0.05	0.1	0.2	0.4	0.8	1.6	3.2	6.3	12.5	25	50
GRADES	N1		N2	N3	N4	N5	N6	N7	N8	N9	N10	N11	N12
SYMBOLS	▽▽▽			▽▽▽			▽▽			▽			~
TOLERANCE FREE DIMENSIONS TOLERANCE		MATERIALS:		2014		NAME		DATE		WEMAG 2002262.0202			
Dimns.		16MnCr5		DRAWN		Bala		26/07					
Dia		16MnCr5		CHECKED		RVL		26/07					
Length		16MnCr5		APPROVED		-		-					
0.5 to 3	± 0.05	± 0.10	PART NAME:		SCALE :		NTS		QTY. :		DRAWING No.		REV.
3 to 6	± 0.10	± 0.15	COLLET CHUCK HOLDER		SK40 CCH ER11 160M FTC WW		00						
6 to 30	± 0.15	± 0.20											
30 to 120	± 0.20	± 0.25											
120 to 500	± 0.30	± 0.50											