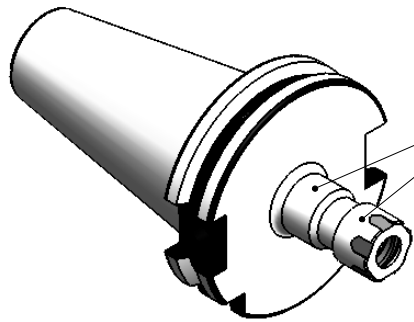
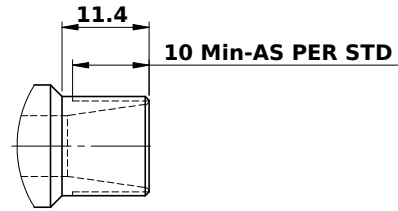


All Dimensions are in MM

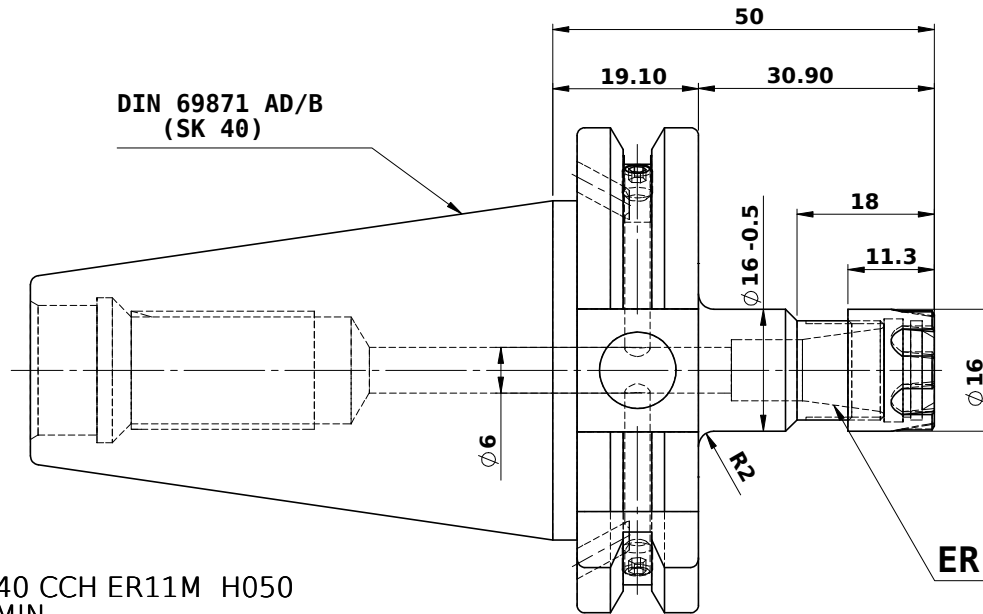
Rev.No.	Ch.Let	Alterations	Date	Sign.	Appd.



ALL SILVER LOOK



DIN 69871 AD/B
(SK 40)



CUSTOMER APPROVAL REQUIRED

APPROVED BY

DATE

FOR QUOTATION PURPOSE ONLY

MARKING : DIN 69871 AD/B SK40 CCH ER11M H050
G2.5 25000 U/MIN

LABEL :
2002262.0200
Spannzangenaufnahme
ER Collet chuck holder
DIN 69871 SK40 AD/B
ER11M X 50 mm
G 2,5 25000 U/MIN

WEIGHT :0.8 Kg.

BALANCING 2.5G @ 25000 RPM

ITEM NO.	PART NUMBER	DESCRIPTION	QTY.
1	SK40 CCH ER11 050M FTC WW	COLLET CHUCK HOLDER	1
2	FTNUTER11M	COLLET NUT	1
3	BO	GRUB SCREW M4X4	2

μ m	0.012	0.025	0.05	0.1	0.2	0.4	0.8	1.6	3.2	6.3	12.5	25	50		
GRADES	N1	N2	N3	N4	N5	N6	N7	N8	N9	N10	N11	N12			
SYMBOLS	▽▽▽	▽▽	▽	▽	▽	▽	▽	▽	▽	▽	▽	▽	~		
TOLERANCE FREE DIMENSIONS TOLERANCE	2014			NAME		DATE		WEMAG 2002262.0200							
MATERIALS:	16MnCr5			DRAWN		Bala								26/07	
Dimns.	Dia	Length	CHECKED		RVL		26/07								
0.5 to 3	± 0.05	± 0.10	APPROVED												
3 to 6	± 0.10	± 0.15	SCALE : NTS		QTY. :										
6 to 30	± 0.15	± 0.20	PART NAME:				DRAWING No.				REV.				
30 to 120	± 0.20	± 0.25	COLLET CHUCK HOLDER				SK40 CCH ER11 050M FTC WW				00				
120 to 500	± 0.30	± 0.50													