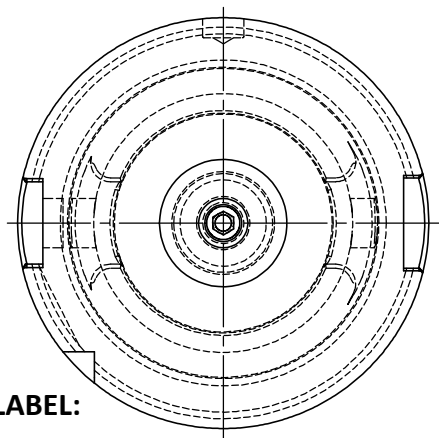
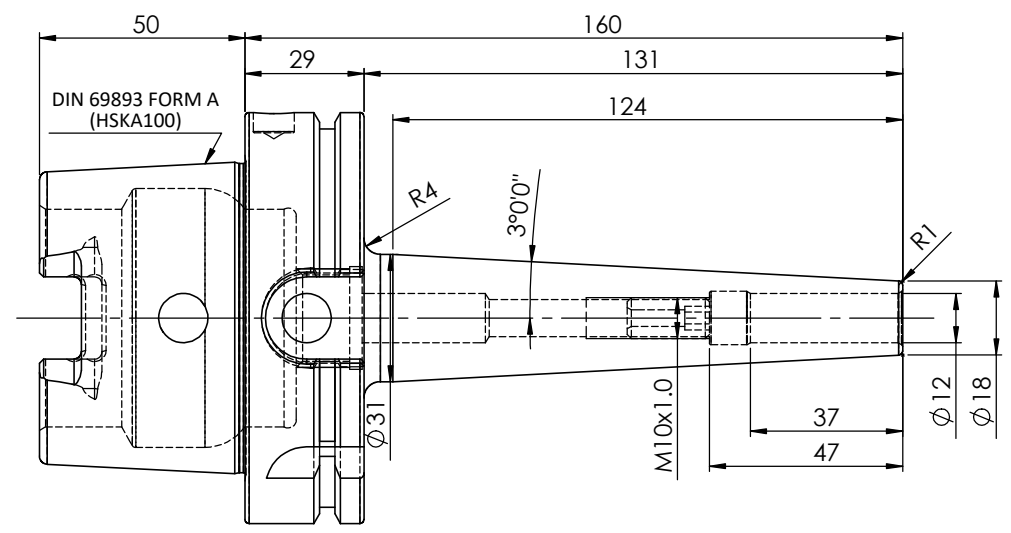
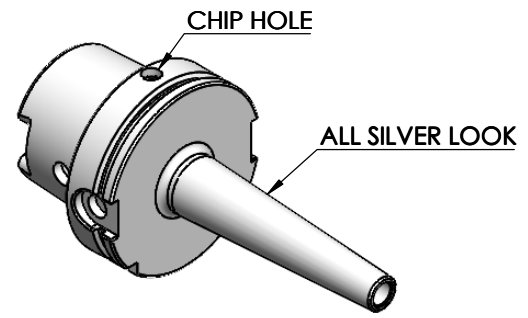


5	6	7	8
Rev.No.	Ch.Let	Alterations	Date

**All Dimensions are in MM**

**For Customer Approval**



**LABEL:**  
**2002388.1202**  
**SCHRUMPFUTTER SCHLANK 3°**  
**SHRINK FIT HOLDER SLIM 3°**  
**DIN 69893 HSK100A**  
**SRS 12mm X 160mm**  
**G2.5/25000 U/MIN**

**MARKING: DIN 69893 A HSK100A SFHS12 H160**  
**G2.5 25000 U/MIN**

Notes	
Balancing Value	G2.5 @25000 RPM
Approx Weight	2.40Kg

	µ m	0.012	0.025	0.05	0.1	0.2	0.4	0.8	1.6	3.2	6.3	12.5	25	50
GRADES		N1	N2	N3	N4	N5	N6	N7	N8	N9	N10	N11	N12	
SYMBOLS		▽▽▽	▽▽	▽	▽	▽	▽	▽	▽	▽	▽	▽	▽	~
TOLERANCE FREE DIMENSIONS TOLERANCE		MATERIALS: HDS		NAME		DATE		<b>2002388.1202</b>						
Dimns.	Dia	Length	DRAWN	YSK	03/09									
0.5 to 3	± 0.05	± 0.10	CHECKED	RVL	03/09									
3 to 6	± 0.10	± 0.15	APPROVED											
6 to 30	± 0.15	± 0.20	SCALE: NTS	QTY.:										
30 to 120	± 0.20	± 0.25	PART NAME:		DRAWING No.		<b>FWA100H-SFS12160</b>							
120 to 500	± 0.30	± 0.50	<b>HSKA100SFS12160WW</b>		<b>REV. 00</b>									

ITEM NO.	PART NUMBER	DESCRIPTION	QTY.
2	SCWM10x1x20	STOPPER SCREW	1
1	FWA100H-SFS12160	HSKA100SFS12160WW	1