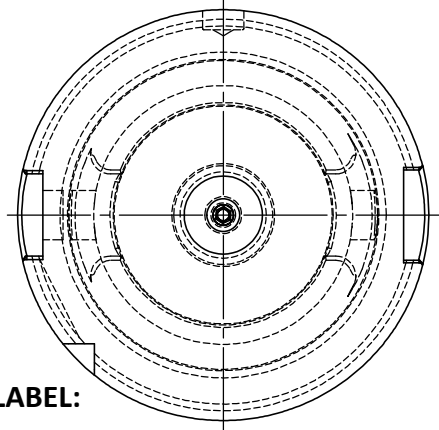
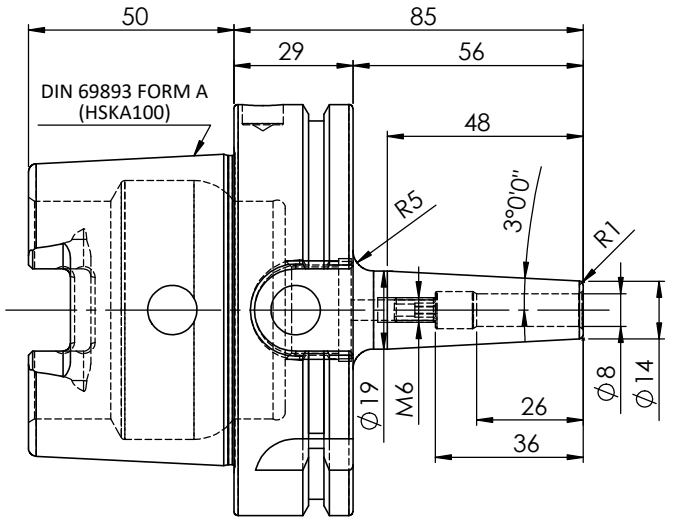
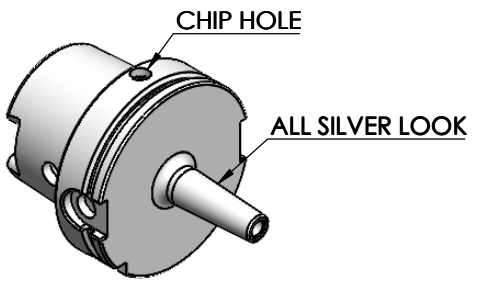


Rev.No.	Ch.Let	Alterations	Date	Sign.	Appd.

**All Dimensions are in MM**

**For Customer Approval**



**LABEL:**

**2002388.0800**  
**SCHRUMPFUTTER SCHLANK 3°**  
**SHRINK FIT HOLDER SLIM 3°**  
**DIN 69893 HSK100A**  
**SRS 08mm X 085mm**  
**G2.5/25000 U/MIN**

**MARKING: DIN 69893 A HSK100A SFHS08 H085**  
**G2.5 25000 U/MIN**

Notes	
Balancing Value	G2.5 @25000 RPM
Approx Weight	2.10Kg

μ m	0.012		0.025		0.05		0.1		0.2		0.4		0.8		1.6		3.2		6.3		12.5		25		50	
	GRADES	N1	N2	N3	N4	N5	N6	N7	N8	N9	N10	N11	N12													
SYMBOLS	▽▽▽▽												▽▽▽				▽		~							
TOLERANCE FREE DIMENSIONS TOLERANCE		MATERIALS: HDS		2024		NAME		DATE		<b>2002388.0800</b>																
Dimns. Dia Length		DRAWN		YSK		03/09																				
0.5 to 3 ± 0.05 ± 0.10		CHECKED		RVL		03/09																				
3 to 6 ± 0.10 ± 0.15		APPROVED		SCALE: NTS		QTY.:																				
6 to 30 ± 0.15 ± 0.20		PART NAME:						DRAWING No.						REV.												
30 to 120 ± 0.20 ± 0.25		<b>HSKA100SFS08085WW</b>						<b>FWA100H-SFS08085</b>						00												
120 to 500 ± 0.30 ± 0.50																										

ITEM NO.	PART NUMBER	DESCRIPTION	QTY.
2	SCWM6X1X10	STOPPER SCREW (B.O.)	1
1	FWA100H-SFS08085	HSKA100SFS08085WW	1