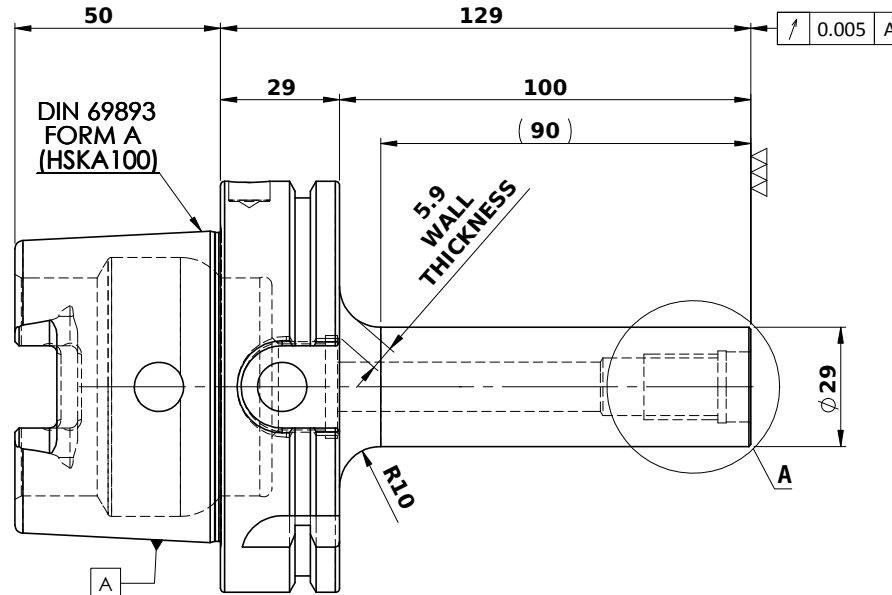
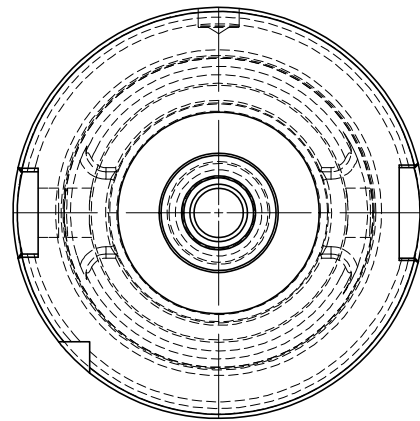
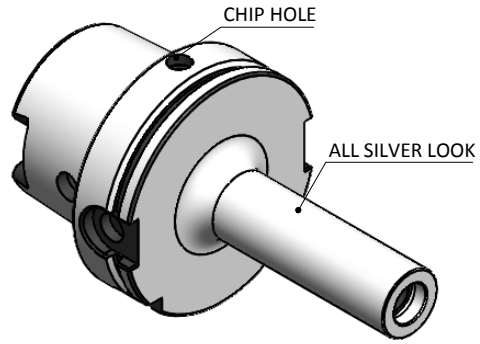


All Dimensions are in MM

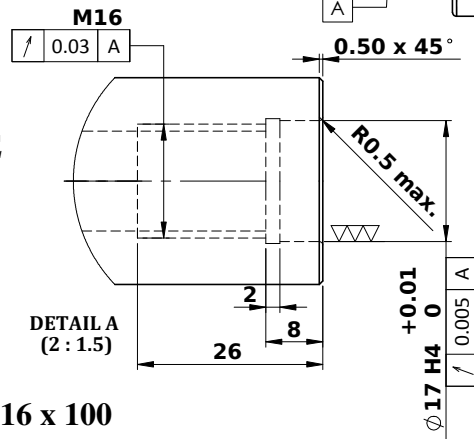
Rev.No.	Ch.Lef	Alterations	Date	Sign.	Appd.



**LABEL:-**

2002385.1601  
 EINSCHRAUBFRÄSERAUFNAHME  
 SCREW-ON HOLDER ZYL/CYL  
 DIN 69893 A HSK100A  
 ESS M16 x 100 mm x 129 mm  
 G2,5 / 25000 U/MIN

**MARKING: DIN 69893 A HSK100A M16 x 100  
 G2,5 25000 U/MIN**



**NOTE:**

**BALANCING 2.5 G @ 25000 RPM**

**WEIGHT: 2.4 Kg**

	μ m	0.012	0.025	0.05	0.1	0.2	0.4	0.8	1.6	3.2	6.3	12.5	25	50
GRADES		N1	N2	N3	N4	N5	N6	N7	N8	N9	N10	N11	N12	
SYMBOLS		▽▽▽	▽▽	▽	▽	▽	▽	▽	▽	▽	▽	▽	▽	~
TOLERANCE	MATERIALS:	2017		NAME		DATE		<b>2002385.1601</b>						
FREE DIMENSIONS	16MnCr5	DRAWN		SVK		18/08								
TOLERANCE		CHECKED		RVL		18/08								
		APPROVED												
Dimns.	Dia	Length	SCALE: 2:1		QTY.:		PART NAME:							
0.5 to 3	± 0.05	± 0.10	HSKA100TMS16129WW		DRAWING No.									
3 to 6	± 0.10	± 0.15	DRAWING No.		FWA100H-TMS16129									
6 to 30	± 0.15	± 0.20	REV.		00									
30 to 120	± 0.20	± 0.25												
120 to 500	± 0.30	± 0.50												