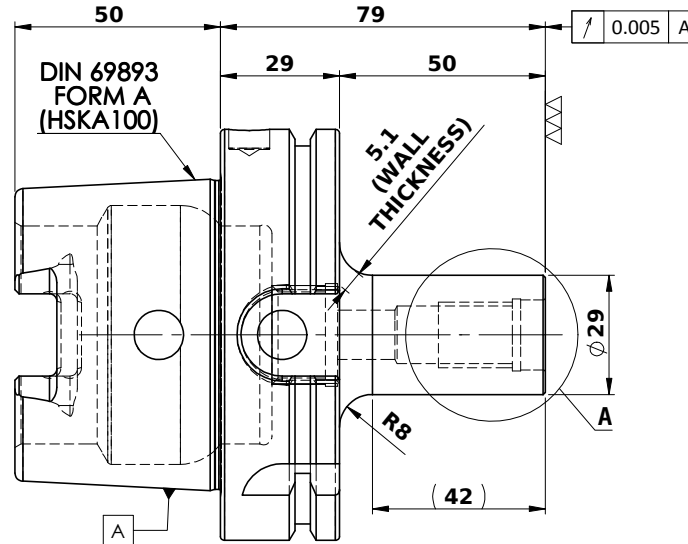
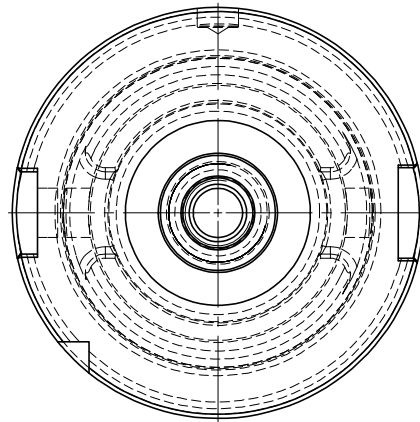
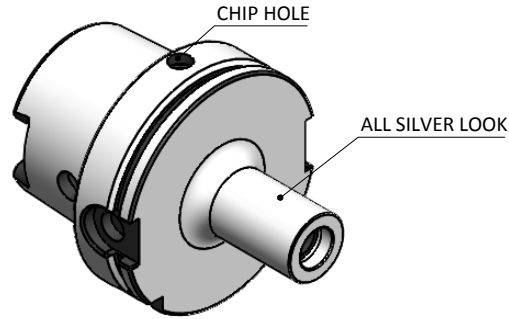


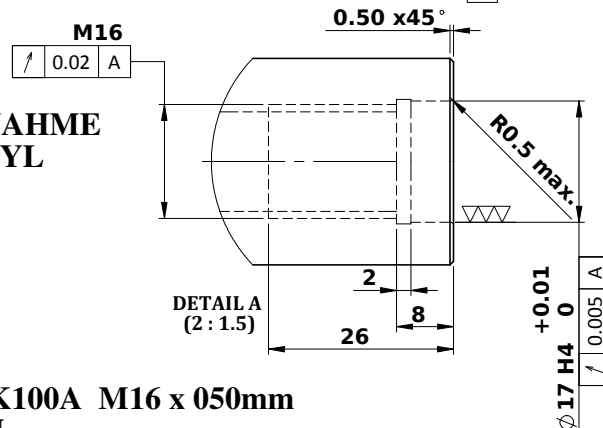
All Dimensions are in MM

Rev.No.	Ch.Lef	Alterations	Date	Sign.	Appd.



LABEL:-

2002385.1600
 EINSCHRAUBFRÄSERAUFNAHME
 SCREW-ON HOLDER ZYL/CYL
 DIN 69893 A HSK100A
 ESS M16 x 050 mm x 079 mm
 G2,5 / 25000 U/MIN



NOTE:

BALANCING 2.5 G @ 25000 RPM

WEIGHT: 2.2 Kg

	μm	0.012	0.025	0.05	0.1	0.2	0.4	0.8	1.6	3.2	6.3	12.5	25	50
GRADES		N1	N2	N3	N4	N5	N6	N7	N8	N9	N10	N11	N12	
SYMBOLS		▽	▽	▽	▽	▽	▽	▽	▽	▽	▽	▽	▽	~
TOLERANCE	MATERIALS:		2019	NAME	DATE	2002385.1600								
FREE DIMENSIONS	16MnCr5		DRAWN	AMK	30/04									
TOLERANCE			CHECKED	RVL	30/04									
			APPROVED											
Dimns.	Dia	Length	SCALE: 2:1		QTY.:	PART NAME:								
0.5 to 3	± 0.05	± 0.10				HSKA100TMS16079WW								
3 to 6	± 0.10	± 0.15				DRAWING No.								
6 to 30	± 0.15	± 0.20				FWA100H-TMS16079								
30 to 120	± 0.20	± 0.25				REV.								
120 to 500	± 0.30	± 0.50				00								

**MARKING: DIN 69893 A HSK100A M16 x 050mm
 G2,5 25000 U/MIN**