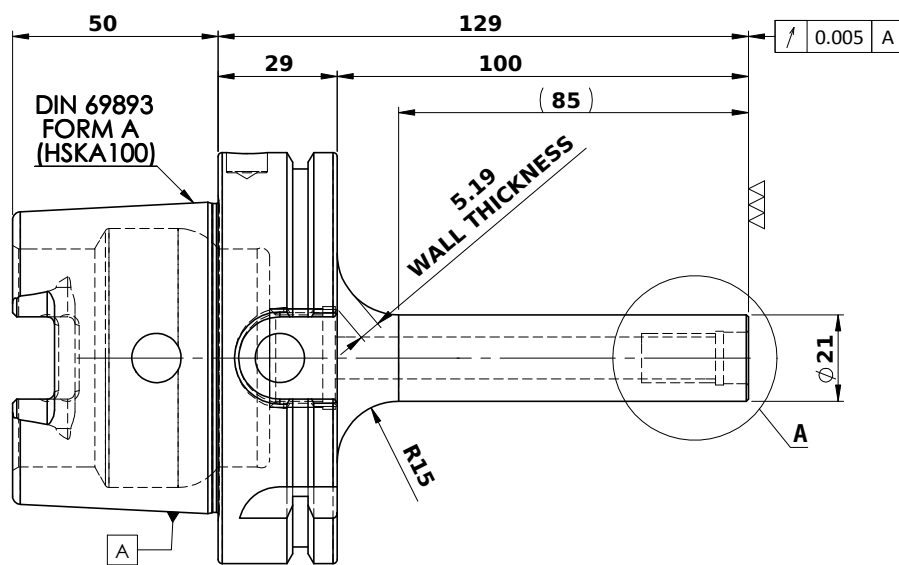
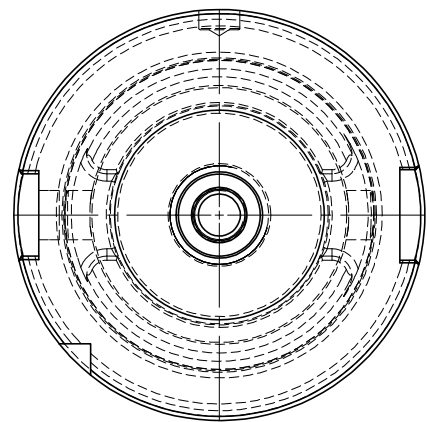
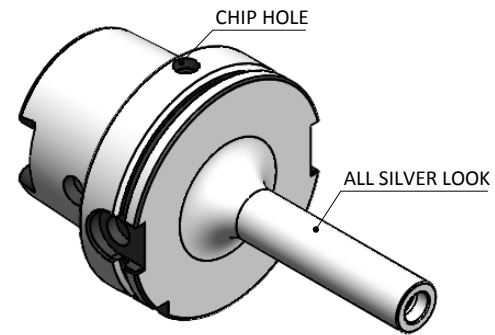


5	6	7	8
Rev.No.	Ch.Lef	Alterations	Date

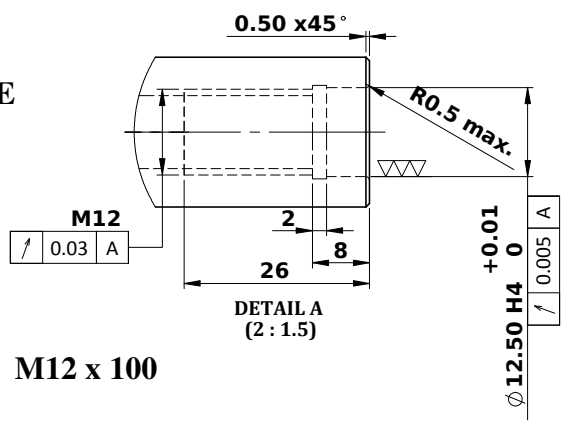
All Dimensions are in MM



**LABEL:-**

2002385.1201  
 EINSCHRAUBFRÄSERAUFNAHME  
 SCREW-ON HOLDER ZYL/CYL  
 DIN 69893 A HSK100A  
 ESS M12 x 100 mm x 129 mm  
 G2,5 / 25000 U/MIN

**MARKING: DIN 69893 A HSK100A M12 x 100  
 G2,5 25000 U/MIN**



**NOTE:**

**BALANCING 2.5 G @ 25000 RPM**

**WEIGHT: 2.2 Kg**

μm	0.012	0.025	0.05	0.1	0.2	0.4	0.8	1.6	3.2	6.3	12.5	25	50
GRADES	N1	N2	N3	N4	N5	N6	N7	N8	N9	N10	N11	N12	
SYMBOLS	▽▽▽▽▽▽▽▽▽▽▽▽												
TOLERANCE FREE DIMENSIONS TOLERANCE	MATERIALS: 16MnCr5			2017		NAME		DATE		2002385.1201			
Dimns. Dia Length	DRAWN SVK			18/08		CHECKED RVL		18/08					
0.5 to 3	± 0.05	± 0.10	± 0.15	APPROVED		SCALE: 2:1		QTY.:					
3 to 6	± 0.10	± 0.15	± 0.20	PART NAME: HSKA100TMS12129WW				DRAWING No. FWA100H-TMS12129		REV. 00			
6 to 30	± 0.15	± 0.20	± 0.25										
30 to 120	± 0.20	± 0.25	± 0.30										
120 to 500	± 0.30	± 0.50											